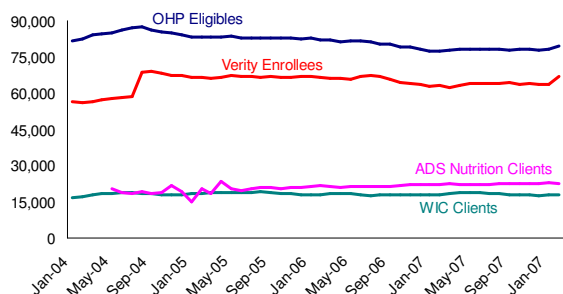


BASIC NEEDS PRIORITY BRIEF: FEBRUARY 2008

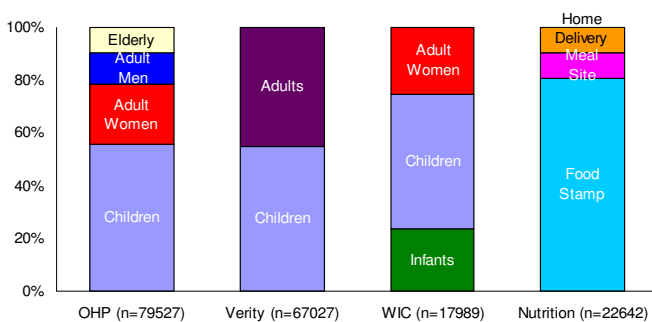
Multnomah County Basic Needs Clients

Clients Enrolled or Served by Basic Needs Programs



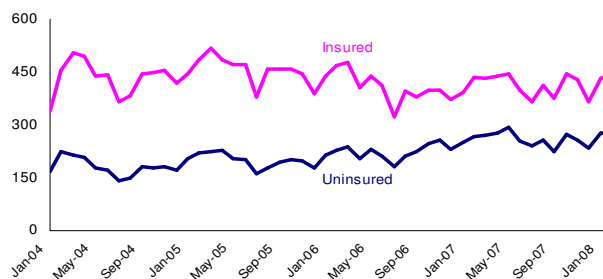
* Participation in OHP, Verity, WIC, and ADS nutrition service programs can overlap.

Clients in Basic Needs Programs: February 2008



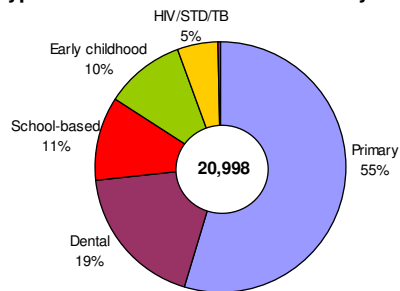
Multnomah County Health Clinic Visits

Average Daily Health Dept. Clinic Visits by Payer Mix



February 2008 had a total of 724 average daily visits. Of those, 62% were insured and 38% were not insured.

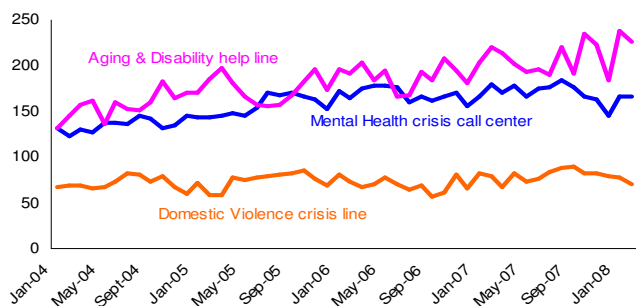
Type of MCHD Clinic Visits: February 2008



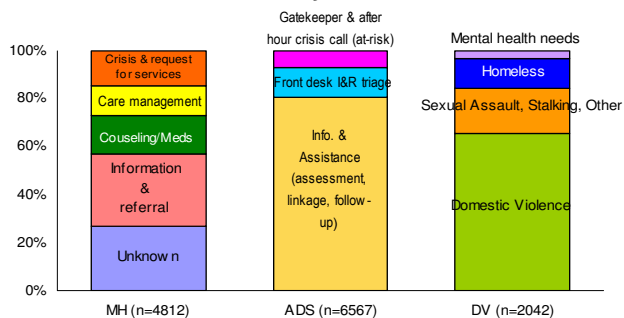
* The above data does not include pharmacy, immunization, or WIC visits. In addition, there were 3,269 clinic visits and lab tests conducted at the County's correctional facilities in February 2008. The average number of daily correction health visits was 113.

Crisis Center & Helpline Calls

Average Daily ADS, MH, & DV Help Line Calls

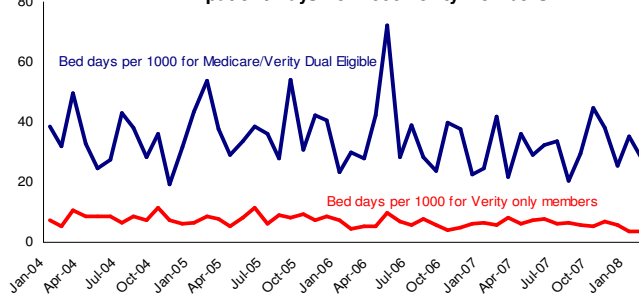


Crisis Help Line Call Or Response Type: February 2008



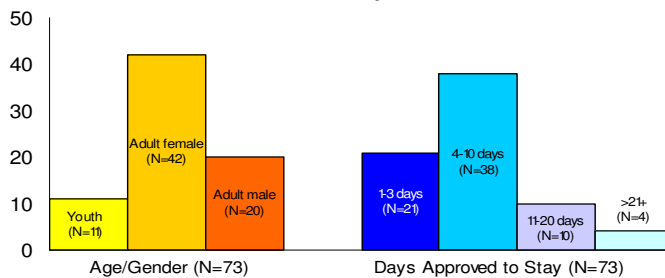
Mental Health Verity Inpatient Days

MH Inpatient Days Per 1000 Verity Members



The County pays an average of \$4,200 per discharge for each Verity only inpatient stay and \$1,100 for Medicare/Verity dual eligibles. The February average length of stay per discharge is 8.1 days.

Verity Inpatient Admission/Discharge Profile: February 2008

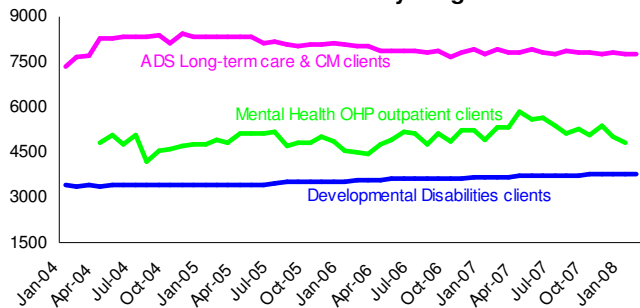


* The 564 paid bed days in February 2008 represent a total of 70 hospital discharges.

Notes: The number of County Health Clinic visits increased for insured patients but remained the same for uninsured patients. The number of ADS Help Line calls declined over last month, but still remains high. The number of Domestic Violence Crisis Line calls continues to decline, and is the lowest since March 2007. The number of bed days per 1000 for mental health Verity-only patients remained low—only slightly higher than last month's record low. This decline can be explained by increased availability for clients to 24-hour respite care in lieu of hospitalization.

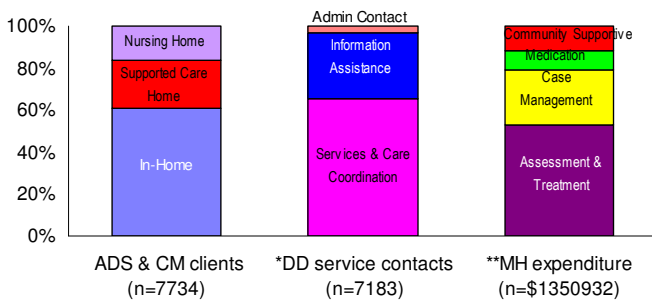
Clients and Case Management Services

Number of Clients Served by Program Area



*Mental Health data show a two month time lag as claims may be submitted up to four months after a visit. Monthly data will change slightly with each new update.

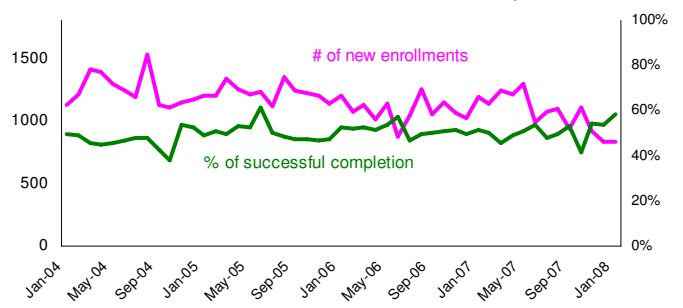
Client or Service Type: February 2008



* DD service contacts can now contain multiple services in one progress note.
** Mental Health expenditure data are from December 2007.

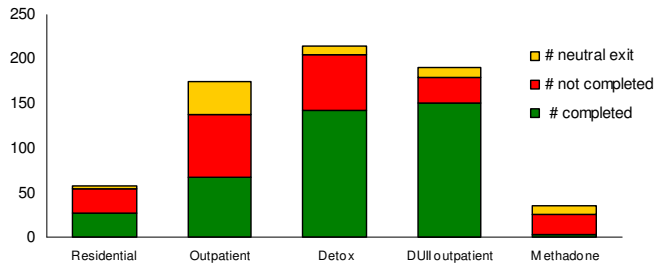
Multnomah County Addictions Treatment

A&D Treatment Enrollment & Successful Completion



* Based on the CPMS data received on 3/24/08. In January 2008, 832 tx episodes opened and 672 closed. The average successful treatment completion rate was 50.7% over the past 12 months. The monthly data will change slightly with each new update.

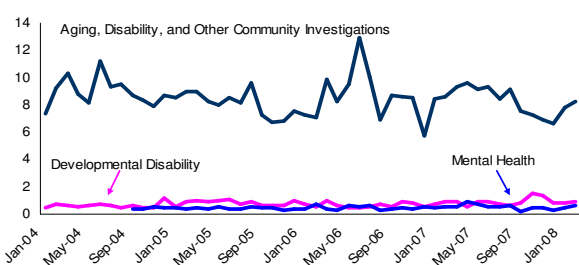
A&D Treatment Exit Type by Modality: January 2008



* Of 672 treatment episodes ending in January 2008, 58% (n=391) successfully completed programs, 31 (n=210) failed to complete, and 11% (n=71) had neutral terminations. All closed cases, no matter how they exited from treatments, were included in the denominator for calculating completion rates.

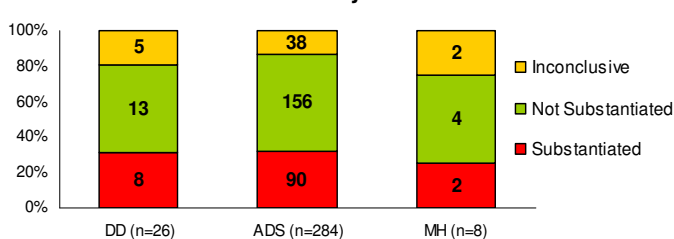
Protective Services for Vulnerable Populations

Average Daily Protective Services Investigations Opened



*Each program serves different populations. ADS is responsible for all protective investigations not covered by developmental disability and mental health services, so they have the largest client base.

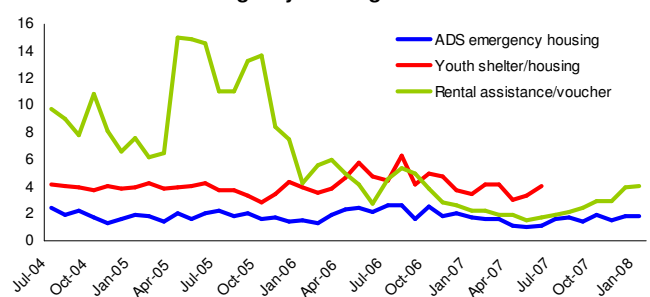
Investigation Case/Allegation Closed: February 2008



*Overall, 282 protective service investigation cases opened and 318 allegations closed in February 2008. Of those closed, 31.4% were substantiated (n= 100). MH 'not substantiated' cases include those that didn't meet the abuse definition.

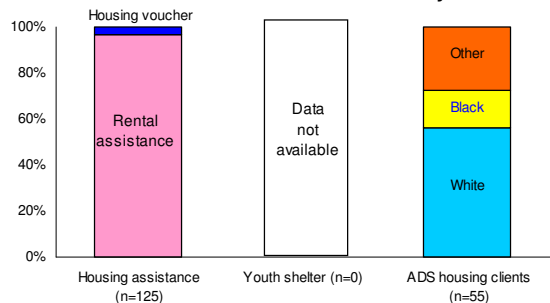
Shelter & Emergency Housing Assistance

Average Daily Clients Receiving Rental Assistance & Emergency Housing Services



* Data for this chart have one month lag time. The number of clients served by youth shelter and housing is temporarily unavailable due to a technical system change.

Homeless Clients Served: January 2008



* Youth shelter data are temporarily unavailable. ADS client counts include individuals living in the same household as the applicant. 'Other' includes individuals whose demographics are unavailable or undocumented.

Notes: The number of developmental disability (DD) service contacts decreased, and is the lowest since July 2007. Most of the decline is due to a drop in total targeted service notes. The number of average daily protective services investigations opened for ADS clients has increased over the past two months. The number of rental assistance and voucher recipients has steadily increased since May 2007.