

TriMet Service to TRIP



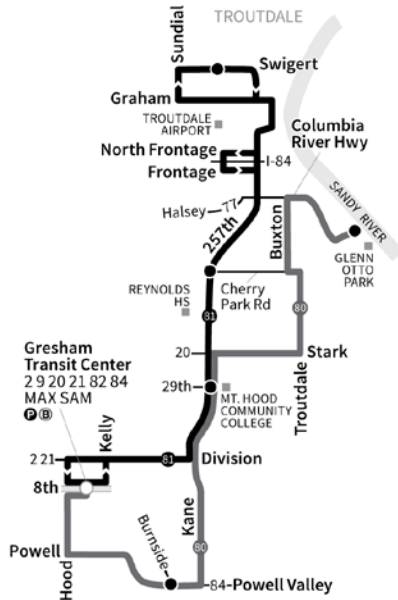
TriMet Service to TRIP

2018: Line 81 begins serving TRIP

2019: more frequent service

**2020: Line 81 service maintained at
2019 levels**

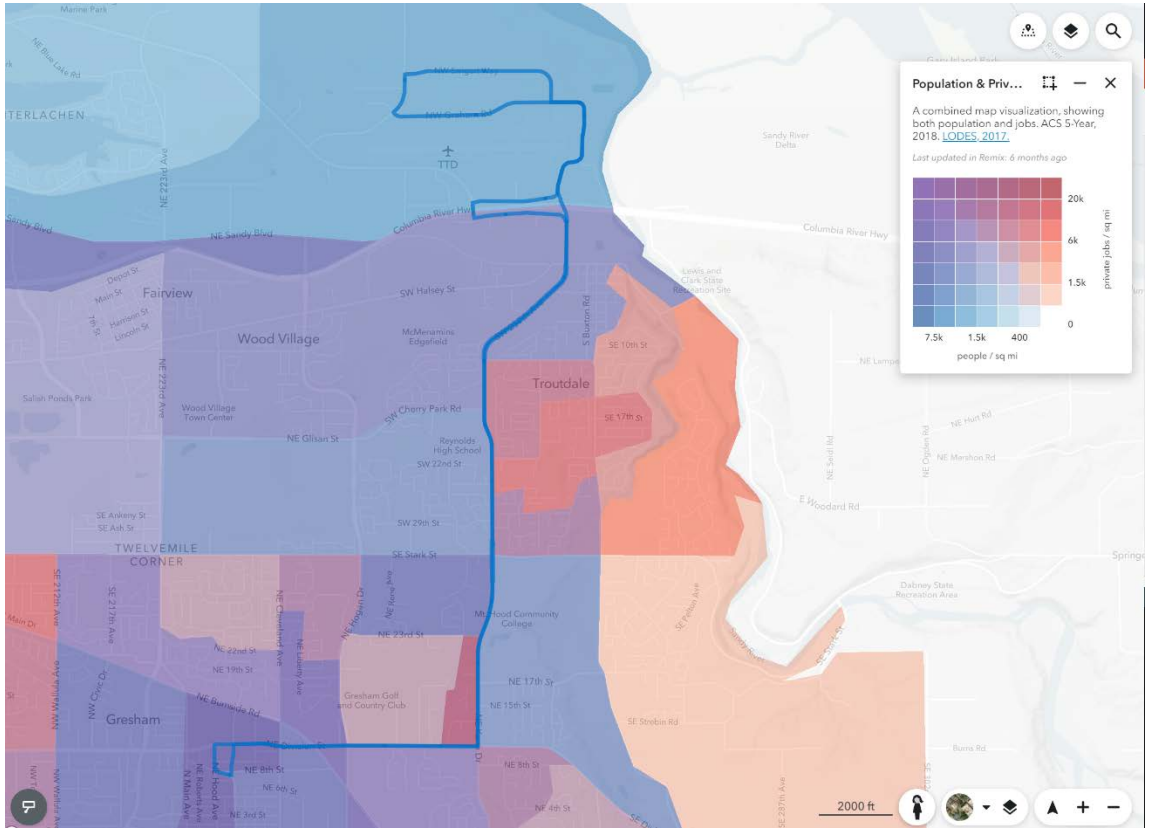
- Route/Schedule Stop
- Ⓟ Park & Ride
- Ⓢ Secure Bike Parking
- 35- Transfer Nearby
- MAX Line and Station



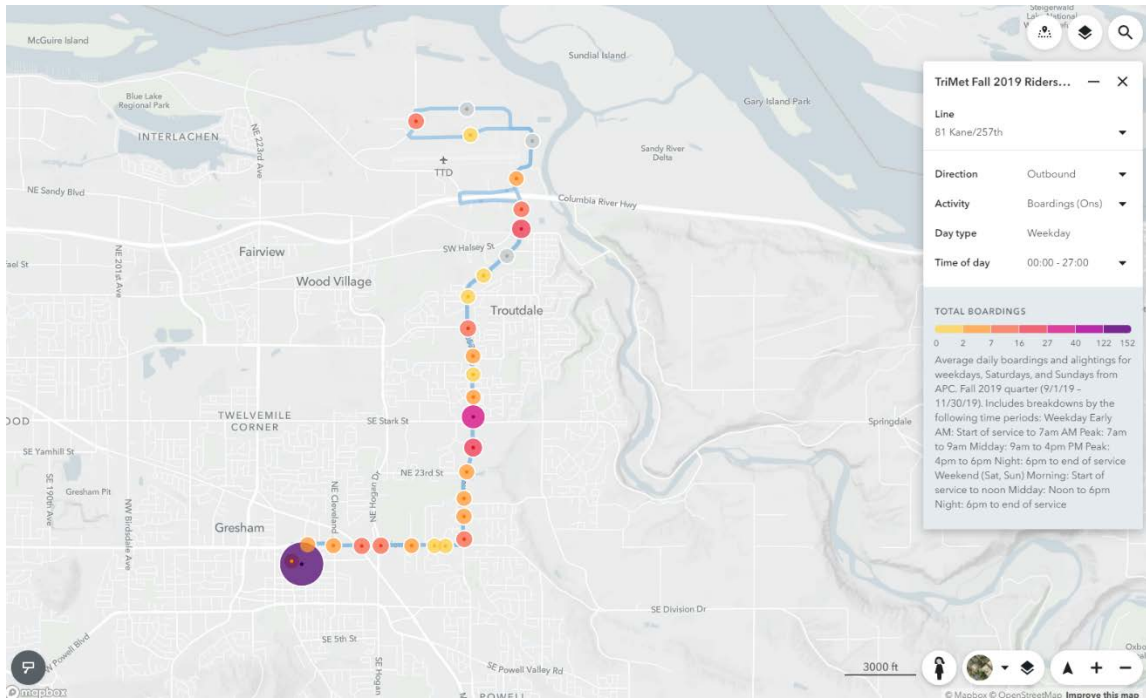
Line 81

Monday-Friday

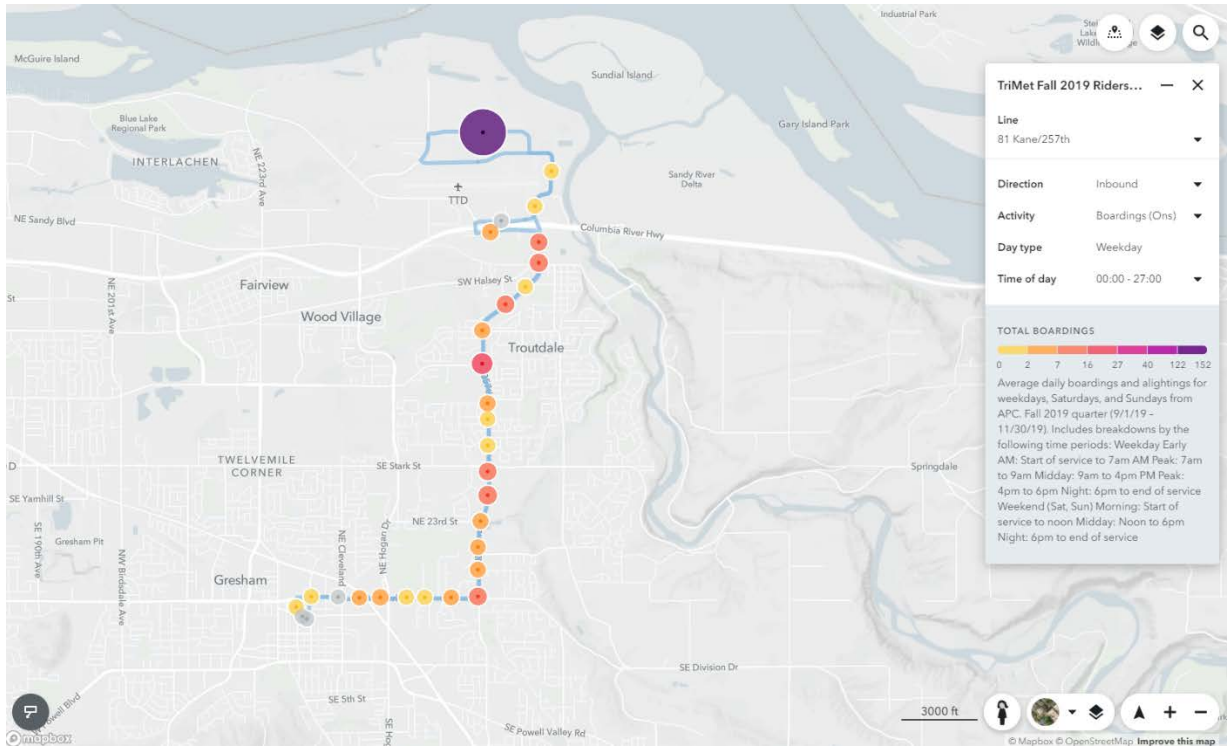
5:30 am – 11:00 pm



Line 81 Ridership (2019 – northbound boardings)



Line 81 Ridership (2019 – southbound boardings)



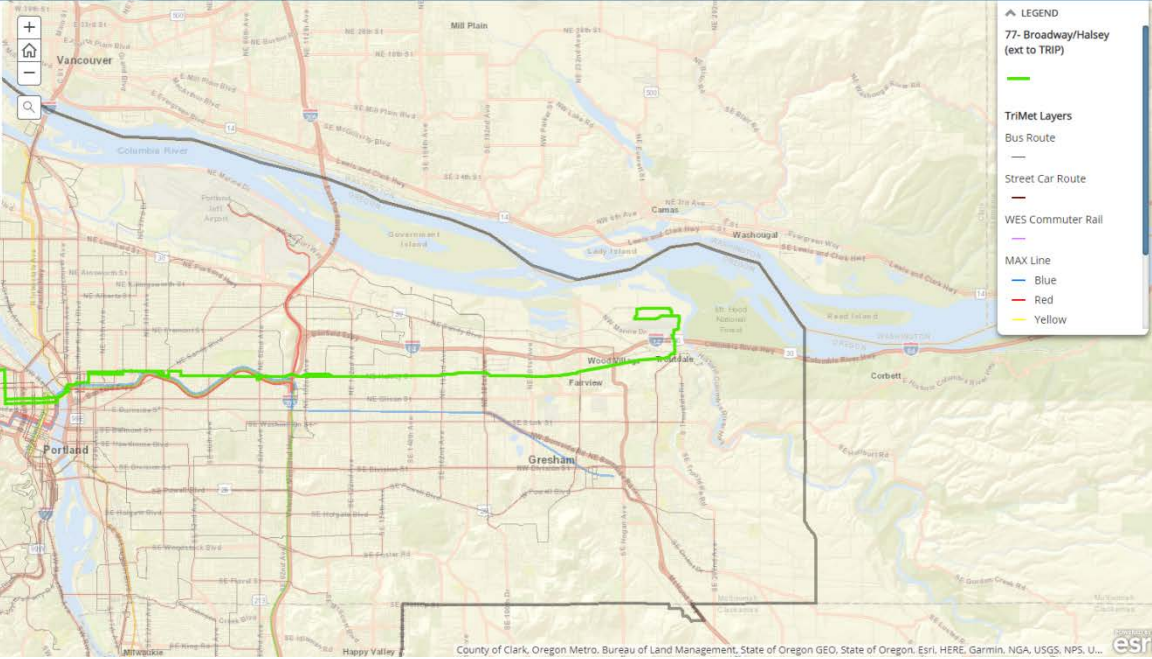
TriMet Express Study - Route Evaluation

Existing System Limited-Stop Express 6 73 75 9 77 56 57 33 35 Hillsboro - Downtown Tanas - Sunset MAX Clack TC - Wash Sq Clack TC - Beaverton Market Index

77 - Broadway/Halsey (extended to Troutdale Reynolds Industrial Park)
 Limited-Stop Service
 Multnomah County

Justification

- Connects multiple areas that score moderate/high on market factor index
- Moderate ridership
- Moderate average trip length
- High travel time savings potential



County of Clark, Oregon Metro, Bureau of Land Management, State of Oregon GEO, State of Oregon, Esri, HERE, Garmin, NGA, USGS, NPS, U...

