

14 DAY OPPORTUNITY TO COMMENT

Application for Administrative Decision by the Planning Director for a Post Emergency Response to Emergency/Disaster Event

This notice serves to notify neighboring property owners of the opportunity to submit written comments on the proposal described below. All comments should relate to the approval criteria and any neighbor that submits comments will receive the County's complete decision in the mail. **If you do not wish to submit comments, no response is necessary.**

Case File: T2-2020-14180

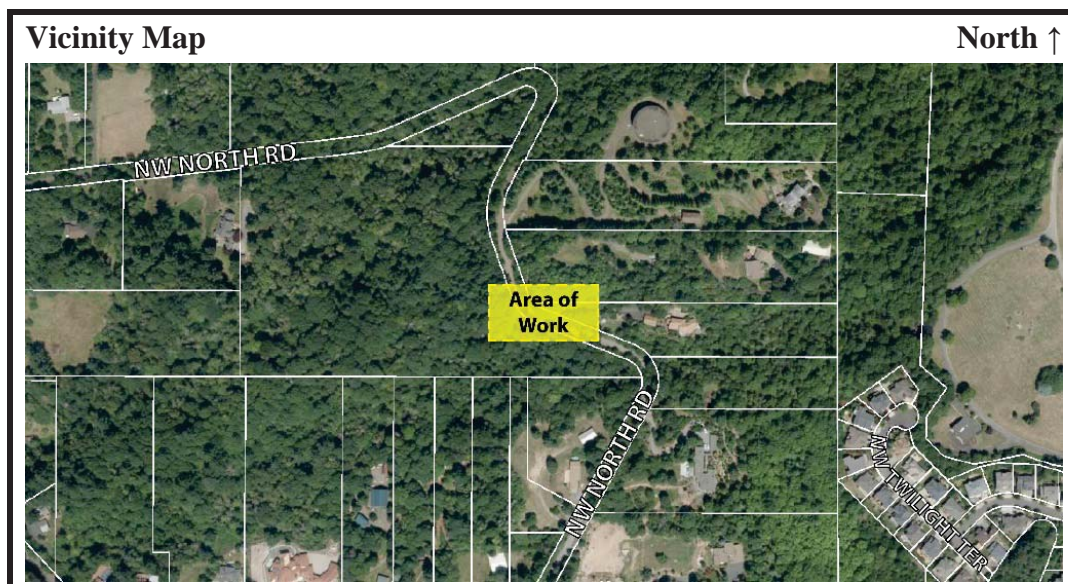
Location: Located within the right of way of NW North Road and the following property:
No Situs Address at the intersection of NW East Road and NW North Road
Tax Lot 2300, Section 22D, Township 1 North, Range 1 West, W.M.
Tax Account #R090604060 Property ID #R118569

Applicant: Tony Weller, CESNW, Inc. and Eric George, Tualatin Valley Water District

Base Zone: Rural Residential (RR)

Overlays: Significant Environmental Concern for Streams (SEC-s)
Geologic Hazards (GH)

Proposal: Applicant requests an Administrative Decision by the Planning Director for a Post Emergency Response to an Emergency/Disaster Event application. The emergency response was to repair a portion of NW North Road that was damaged during a landslide on July 27, 2017. The applicant also constructed a retaining wall to protect a 24-inch water transmission line.



Comment Period: Written comments regarding this application will be accepted, if received by **4:00 pm on Monday, April 5, 2021**. Comments should be directed toward approval criteria applicable to the request. Application materials and other evidence relied upon are available for inspection at no cost by contacting case planner, Rithy Khut at 503-988-0176 or rithy.khut@multco.us. Copies of these materials may be purchased for \$0.35/per page.

For this application to be approved, the proposal will need to meet the applicable approval criteria below:

Multnomah County Code (MCC): Violations, Enforcement and Fines: MCC 39.1515 Code Compliance and Applications

Rural Residential (RR): MCC 39.4365(D) Review Uses, Placement of Structures Necessary for Continued Public Safety Damaged During an Emergency/Disaster Event

Significant Environmental Concern (SEC): MCC 39.5515(A)(18) Exceptions

Geologic Hazards: MCC 39.5080(H) Exemptions

Responses to an Emergency/Disaster Event: MCC 39.6900 Responses to an Emergency/Disaster Event

Copies of the referenced Multnomah County Code sections can be obtained by contacting our office or by visiting our website at <http://multco.us/landuse/zoning-codes/> under the link **Chapter 39 – Zoning Code**.

Decision Making Process: The Planning Director will render a decision on this application after the comment period expires. Notice of the Director's decision will be mailed to the applicant, parties within 750 feet of the subject property, any recognized neighborhood associations, and any other persons who submitted written comments during the comment period. The Planning Director's decision can be appealed. An explanation of the requirements for filing an appeal will be included in the notice of decision.

Important Note: Failure to raise an issue before the close of the public record in sufficient detail to afford the County and all parties an opportunity to respond may preclude appeal on that issue to the Land Use Board of Appeals.

Enclosures:

Zoning Map

Site Plan

Vegetation Plan

Notice to Mortgagee, Lien Holder, Vendor, or Seller:

ORS Chapter 215 requires that if you receive this notice it must be promptly forwarded to the purchaser.



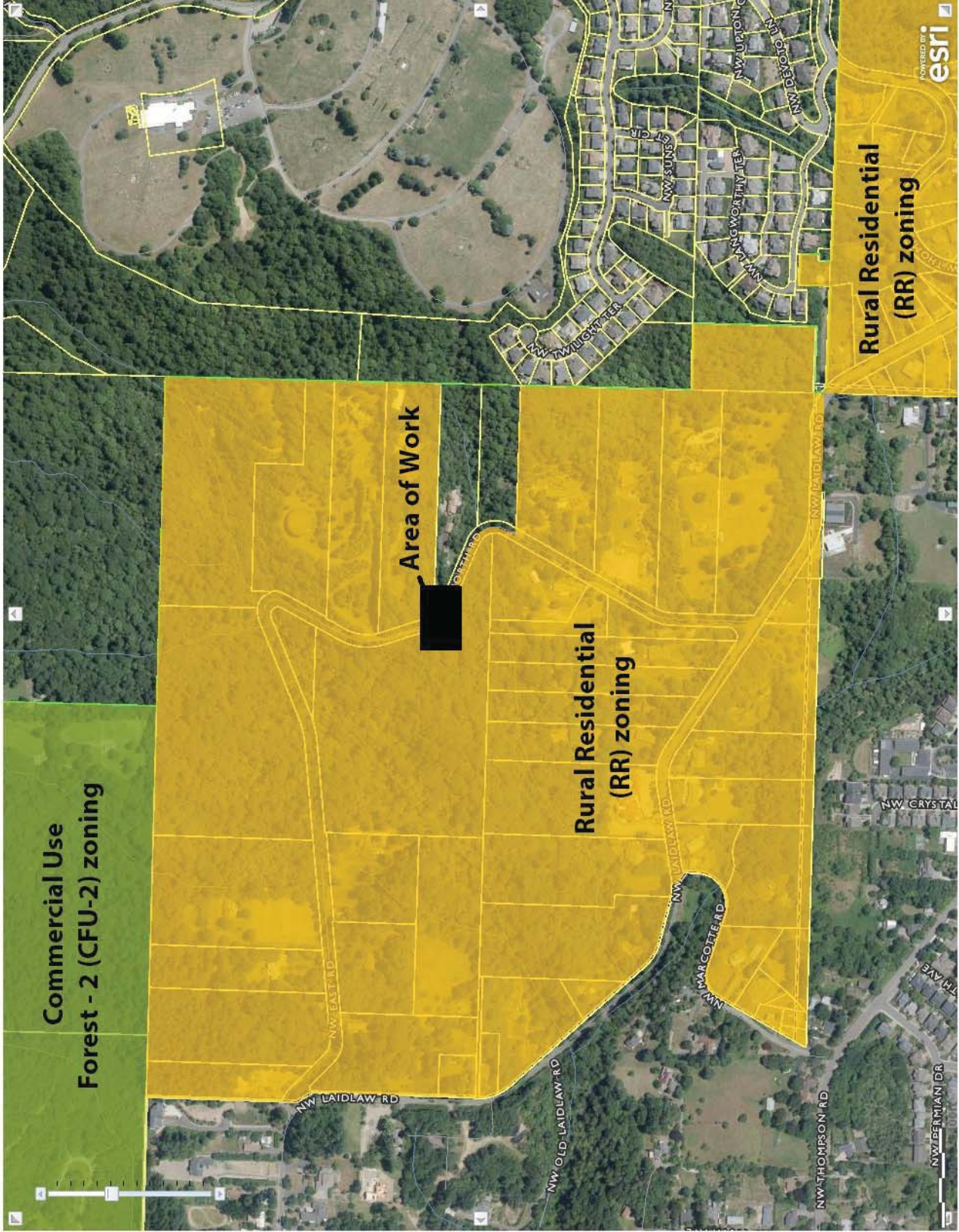
Department of Community Services
 Land Use Planning and Transportation
 Program
 1600 SE 190th Ave.
 Portland, OR 97233
 Ph 503.988.3043
 Fax 503.988.3389
 Email: land.use.planning@multco.us

This map is based on data from non county sources.
 This map is not printed to scale and should not be used for measurement.
 Multnomah County cannot accept responsibility for errors, omissions or positional accuracy. There are no warranties expressed or implied.

Map Comments:

Zoning Map showing zoning near the area of work along NW North Road

[Web Layout](#)



Map Legend



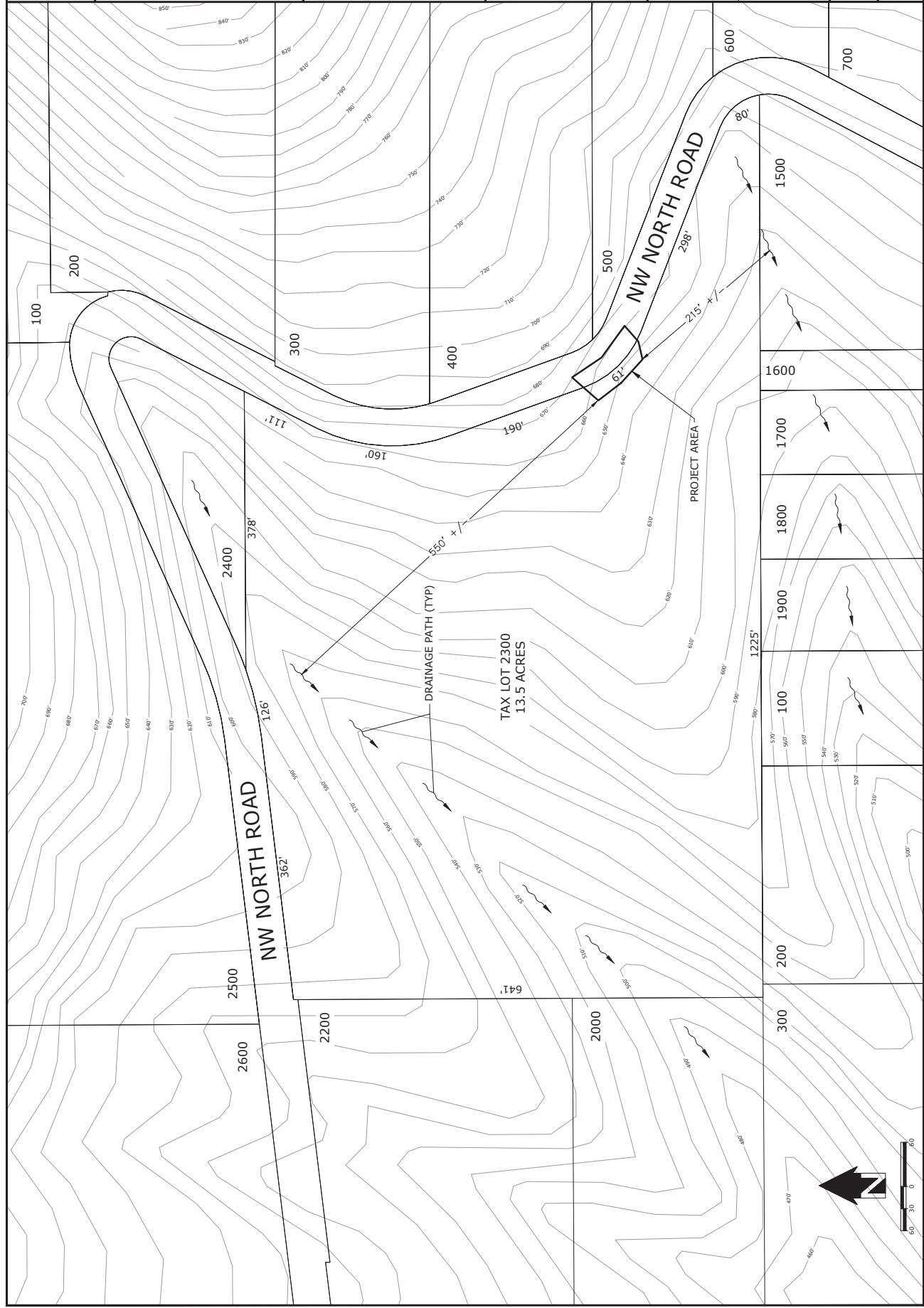
REVIEW: 000022
 TUALATIN VALLEY WATER DISTRICT
 1850 SW 170th AVE.
 BEAVERTON, OR 97003
 CIP NO. B54058

CES | NW
 1190 SW 68th Parkway, Suite 150
 Tigard, Oregon 97223
 503.986.6555 www.cesnw.com

REVISIONS	DATE	BY	APP	REASON
	11/19/2020			

OVERALL SITE PLAN

SHEET
C2.1
 OF
 10





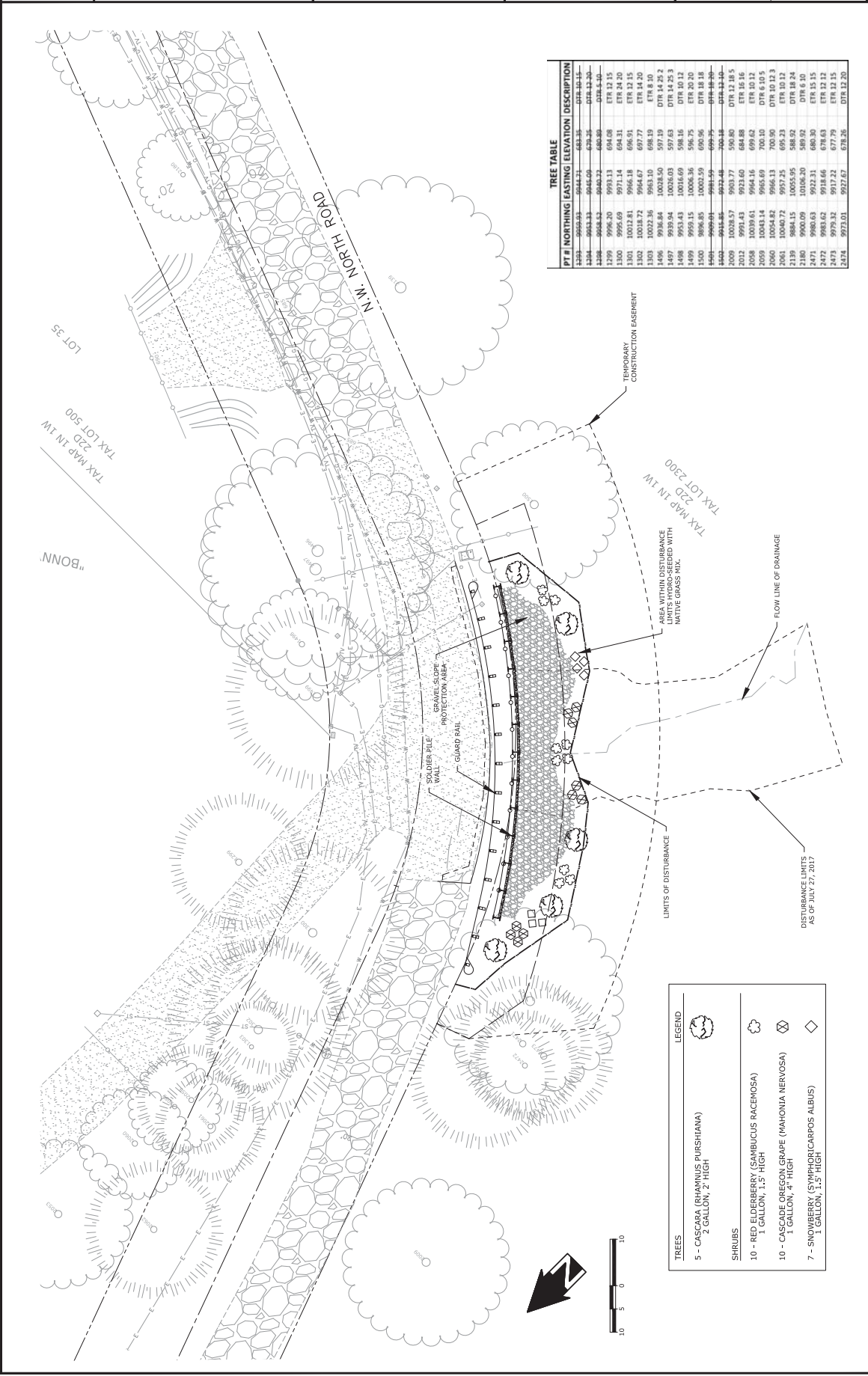
REVEGETATION PLAN
 NORTH ROAD STABILIZATION PROJECT
 CIP NO. B54058
 TUALATIN VALLEY WATER DISTRICT
 1850 SW 170th AVE.
 BEAVERTON, OR 97003

CES | NW
 13195 SW 68th Rowley, Suite 150
 Tigard, Oregon 97223
 503.968.6555 www.cesnw.com

NO.	DATE	DESCRIPTION
1	11/19/2020	ISSUED FOR PERMIT
2	11/19/2020	REVISIONS
3	11/19/2020	REVISIONS
4	11/19/2020	REVISIONS
5	11/19/2020	REVISIONS
6	11/19/2020	REVISIONS
7	11/19/2020	REVISIONS
8	11/19/2020	REVISIONS
9	11/19/2020	REVISIONS
10	11/19/2020	REVISIONS

REVEGETATION PLAN
 PROJECT NO. 2303
 SHEET 10 OF 10

C5.1
 10



PT #	NORTHING	EASTING	ELEVATION	DESCRIPTION
1293	99569.93	9944.21	688.85	ETR 10 15
1294	99569.93	9945.00	678.35	ETR 10 15
1295	99569.93	9945.79	688.85	ETR 10 15
1296	99569.93	9946.58	698.35	ETR 10 15
1297	99569.93	9947.37	707.85	ETR 10 15
1298	99569.93	9948.16	717.35	ETR 10 15
1299	99569.93	9948.95	726.85	ETR 10 15
1300	99569.93	9949.74	736.35	ETR 10 15
1301	10018.72	9966.18	696.91	ETR 12 15
1302	10018.72	9964.67	697.77	ETR 14 20
1303	10022.36	9963.10	698.19	ETR 8 10
1406	9936.84	10028.50	597.19	ETR 14 25.2
1407	9936.84	10026.03	597.63	ETR 14 25.2
1408	9936.84	10023.56	598.07	ETR 14 25.2
1409	9936.84	10021.09	598.51	ETR 14 25.2
1410	9936.84	10018.62	598.95	ETR 14 25.2
1411	9936.84	10016.15	599.39	ETR 14 25.2
1412	9936.84	10013.68	599.83	ETR 14 25.2
1413	9936.84	10011.21	600.27	ETR 14 25.2
1414	9936.84	10008.74	600.71	ETR 14 25.2
1415	9936.84	10006.27	601.15	ETR 14 25.2
1416	9936.84	10003.80	601.59	ETR 14 25.2
1417	9936.84	10001.33	602.03	ETR 14 25.2
1418	9936.84	9998.86	602.47	ETR 14 25.2
1419	9936.84	9996.39	602.91	ETR 14 25.2
1420	9936.84	9993.92	603.35	ETR 14 25.2
1421	9936.84	9991.45	603.79	ETR 14 25.2
1422	9936.84	9988.98	604.23	ETR 14 25.2
1423	9936.84	9986.51	604.67	ETR 14 25.2
1424	9936.84	9984.04	605.11	ETR 14 25.2
1425	9936.84	9981.57	605.55	ETR 14 25.2
1426	9936.84	9979.10	605.99	ETR 14 25.2
1427	9936.84	9976.63	606.43	ETR 14 25.2
1428	9936.84	9974.16	606.87	ETR 14 25.2
1429	9936.84	9971.69	607.31	ETR 14 25.2
1430	9936.84	9969.22	607.75	ETR 14 25.2
1431	9936.84	9966.75	608.19	ETR 14 25.2
1432	9936.84	9964.28	608.63	ETR 14 25.2
1433	9936.84	9961.81	609.07	ETR 14 25.2
1434	9936.84	9959.34	609.51	ETR 14 25.2
1435	9936.84	9956.87	609.95	ETR 14 25.2
1436	9936.84	9954.40	610.39	ETR 14 25.2
1437	9936.84	9951.93	610.83	ETR 14 25.2
1438	9936.84	9949.46	611.27	ETR 14 25.2
1439	9936.84	9946.99	611.71	ETR 14 25.2
1440	9936.84	9944.52	612.15	ETR 14 25.2
1441	9936.84	9942.05	612.59	ETR 14 25.2
1442	9936.84	9939.58	613.03	ETR 14 25.2
1443	9936.84	9937.11	613.47	ETR 14 25.2
1444	9936.84	9934.64	613.91	ETR 14 25.2
1445	9936.84	9932.17	614.35	ETR 14 25.2
1446	9936.84	9929.70	614.79	ETR 14 25.2
1447	9936.84	9927.23	615.23	ETR 14 25.2
1448	9936.84	9924.76	615.67	ETR 14 25.2
1449	9936.84	9922.29	616.11	ETR 14 25.2
1450	9936.84	9919.82	616.55	ETR 14 25.2
1451	9936.84	9917.35	616.99	ETR 14 25.2
1452	9936.84	9914.88	617.43	ETR 14 25.2
1453	9936.84	9912.41	617.87	ETR 14 25.2
1454	9936.84	9909.94	618.31	ETR 14 25.2
1455	9936.84	9907.47	618.75	ETR 14 25.2
1456	9936.84	9905.00	619.19	ETR 14 25.2
1457	9936.84	9902.53	619.63	ETR 14 25.2
1458	9936.84	9900.06	620.07	ETR 14 25.2
1459	9936.84	9897.59	620.51	ETR 14 25.2
1460	9936.84	9895.12	620.95	ETR 14 25.2
1461	9936.84	9892.65	621.39	ETR 14 25.2
1462	9936.84	9890.18	621.83	ETR 14 25.2
1463	9936.84	9887.71	622.27	ETR 14 25.2
1464	9936.84	9885.24	622.71	ETR 14 25.2
1465	9936.84	9882.77	623.15	ETR 14 25.2
1466	9936.84	9880.30	623.59	ETR 14 25.2
1467	9936.84	9877.83	624.03	ETR 14 25.2
1468	9936.84	9875.36	624.47	ETR 14 25.2
1469	9936.84	9872.89	624.91	ETR 14 25.2
1470	9936.84	9870.42	625.35	ETR 14 25.2
1471	9936.84	9867.95	625.79	ETR 14 25.2
1472	9936.84	9865.48	626.23	ETR 14 25.2
1473	9936.84	9863.01	626.67	ETR 14 25.2
1474	9936.84	9860.54	627.11	ETR 14 25.2
1475	9936.84	9858.07	627.55	ETR 14 25.2
1476	9936.84	9855.60	627.99	ETR 14 25.2
1477	9936.84	9853.13	628.43	ETR 14 25.2
1478	9936.84	9850.66	628.87	ETR 14 25.2
1479	9936.84	9848.19	629.31	ETR 14 25.2
1480	9936.84	9845.72	629.75	ETR 14 25.2
1481	9936.84	9843.25	630.19	ETR 14 25.2
1482	9936.84	9840.78	630.63	ETR 14 25.2
1483	9936.84	9838.31	631.07	ETR 14 25.2
1484	9936.84	9835.84	631.51	ETR 14 25.2
1485	9936.84	9833.37	631.95	ETR 14 25.2
1486	9936.84	9830.90	632.39	ETR 14 25.2
1487	9936.84	9828.43	632.83	ETR 14 25.2
1488	9936.84	9825.96	633.27	ETR 14 25.2
1489	9936.84	9823.49	633.71	ETR 14 25.2
1490	9936.84	9821.02	634.15	ETR 14 25.2
1491	9936.84	9818.55	634.59	ETR 14 25.2
1492	9936.84	9816.08	635.03	ETR 14 25.2
1493	9936.84	9813.61	635.47	ETR 14 25.2
1494	9936.84	9811.14	635.91	ETR 14 25.2
1495	9936.84	9808.67	636.35	ETR 14 25.2
1496	9936.84	9806.20	636.79	ETR 14 25.2
1497	9936.84	9803.73	637.23	ETR 14 25.2
1498	9936.84	9801.26	637.67	ETR 14 25.2
1499	9936.84	9798.79	638.11	ETR 14 25.2
1500	9936.84	9796.32	638.55	ETR 14 25.2
1501	9936.84	9793.85	638.99	ETR 14 25.2
1502	9936.84	9791.38	639.43	ETR 14 25.2
1503	9936.84	9788.91	639.87	ETR 14 25.2
1504	9936.84	9786.44	640.31	ETR 14 25.2
1505	9936.84	9783.97	640.75	ETR 14 25.2
1506	9936.84	9781.50	641.19	ETR 14 25.2
1507	9936.84	9779.03	641.63	ETR 14 25.2
1508	9936.84	9776.56	642.07	ETR 14 25.2
1509	9936.84	9774.09	642.51	ETR 14 25.2
1510	9936.84	9771.62	642.95	ETR 14 25.2
1511	9936.84	9769.15	643.39	ETR 14 25.2
1512	9936.84	9766.68	643.83	ETR 14 25.2
1513	9936.84	9764.21	644.27	ETR 14 25.2
1514	9936.84	9761.74	644.71	ETR 14 25.2
1515	9936.84	9759.27	645.15	ETR 14 25.2
1516	9936.84	9756.80	645.59	ETR 14 25.2
1517	9936.84	9754.33	646.03	ETR 14 25.2
1518	9936.84	9751.86	646.47	ETR 14 25.2
1519	9936.84	9749.39	646.91	ETR 14 25.2
1520	9936.84	9746.92	647.35	ETR 14 25.2
1521	9936.84	9744.45	647.79	ETR 14 25.2
1522	9936.84	9741.98	648.23	ETR 14 25.2
1523	9936.84	9739.51	648.67	ETR 14 25.2
1524	9936.84	9737.04	649.11	ETR 14 25.2
1525	9936.84	9734.57	649.55	ETR 14 25.2
1526	9936.84	9732.10	649.99	ETR 14 25.2
1527	9936.84	9729.63	650.43	ETR 14 25.2
1528	9936.84	9727.16	650.87	ETR 14 25.2
1529	9936.84	9724.69	651.31	ETR 14 25.2
1530	9936.84	9722.22	651.75	ETR 14 25.2
1531	9936.84	9719.75	652.19	ETR 14 25.2
1532	9936.84	9717.28	652.63	ETR 14 25.2
1533	9936.84	9714.81	653.07	ETR 14 25.2
1534	9936.84	9712.34	653.51	ETR 14 25.2
1535	9936.84	9709.87	653.95	ETR 14 25.2
1536	9936.84	9707.40	654.39	ETR 14 25.2
1537	9936.84	9704.93	654.83	ETR 14 25.2
1538	9936.84	9702.46	655.27	ETR 14 25.2
1539	9936.84	9700.00	655.71	ETR 14 25.2
1540	9936.84	9697.53	656.15	ETR 14 25.2
1541	9936.84	9695.06	656.59	ETR 14 25.2
1542	9936.84	9692.59	657.03	ETR 14 25.2
1543	9936.84	9690.12	657.47	ETR 14 25.2
1544	9936.84	9687.65	657.91	ETR 14 25.2
1545	9936.84	9685.18	658.35	ETR 14 25.2
1546	9936.84	9682.71	658.79	ETR 14 25.2
1547	9936.84	9680.24	659.23	ETR 14 25.2
1548	9936.84	9677.77	659.67	ETR 14 25.2
1549	9936.84	9675.30	660.11	ETR 14 25.2
1550	9936.84	9672.83	660.55	ETR 14 25.2
1551	9936.84	9670.36	660.99	ETR 14 25.2
1552	9936.84	9667.89	661.43	ETR 14 25.2
1553	9936.84	9665.42	661.87	ETR 14 25.2
1554	9936.84	9662.95	662.31	ETR 14 25.2
1555	9936.84	9660.48	662.75	ETR 14 25.2
1556	9936.84	9658.01	663.19	ETR 14 25.2
1557	9936.84	9655.54	663.63	ETR 14 25.2
1558	9936.84	9653.07	664.07	ETR 14 25.2
1559	9936.84	9650.60	664.51	ETR 14 25.2
1560	9936.84	9648.13	664.95	ETR 14 25.2
1561	9936.84	9645.66	665.39	ETR 14 25.2
1562	9936.84	9643.19	665.83	ETR 14 25.2
1563	9936.84	9640.72	666.27	ETR 14 25.2
1564	9936.84	9638.25	666.71	ETR 14 25.2
1565	9936.84	9635.78	667.15	ETR 14 25.2
1566	9936.84	9633.31	667.59	ETR 14 25.2
1567	9936.84	9630.84	668.03	ETR 14 25.2
1568	9936.84	9628.37	668.47	ETR 14 25.2
1569	9936.84	9625.90	668.91	ETR 14 25.2
1570	9936.84	9623.43	669.35	ETR 14 25.2
1571	9936.84	9620.96	669.79	ETR 14 25.2
1572	9936.84	9618.49	670.23	ETR 14 25.2
1573	9936.84	9616.02	670.67	ETR 14 25.2
1574	9936.84	9613.55	671.11	