



Local Public Safety Coordinating Council of Multnomah County

Public Safety Trends Summary

The Public Safety Trends document provides an executive level summary of operational data for many of the decision points and agencies in Multnomah County's public safety system. The statistics in the Report are compiled from the Decision Support System – Justice (DSSJ) data warehouse.

July 2014

Dear Reader,

Welcome to the Public Safety Trends Summary Report produced by Multnomah County's Local Public Safety Coordinating Council (LPSCC). The purpose of this report is to provide an executive level summary of operational data for many of the decision points in the County's Public Safety System for the Council's Executive Committee, partner agency staff, and members of the public.

The statistics detailed in this report are sourced from the County's Decision Support System – Justice data warehouse (DSSJ). The data contained in DSSJ is sourced from the host agency systems and is regularly audited for accuracy. Additionally, the data presented in this report is regularly reviewed by the owner agency analysts for consistency and clarity.

The Report provides both long-term trend data and short-term descriptive statistics. The long-term trends section provides a description of how certain types of events, case types, and charge levels have changed over time. The short-term trends section provides a more detailed description of the data presented in the long-term trend section. Measures of reported Incidents, Arrest, Disposition, and Sentencing are reported at the case unit level. Measures for Booking and Custody are reported at the person level.

The Public Safety Trends Report is produced on a regular basis and serves as a starting point for broader investigations of trends in local public safety. Frequently, the Report will contain a special analysis section providing a systems perspective of specific areas in the local public safety system.

Lauren Brown
LPSCC Analyst

Items of Note and Updates

Reported Part 1 crime during January 1, 2014 – July 31, 2014 in Multnomah County has increased when compared to the same time period in 2013. This increase is driven by increases in reported Part 1 property crime, specifically larcenies.

Slight increases were seen in July 2014 when compared to June 2014 for arrests, bookings, and cases reviewed by prosecution.

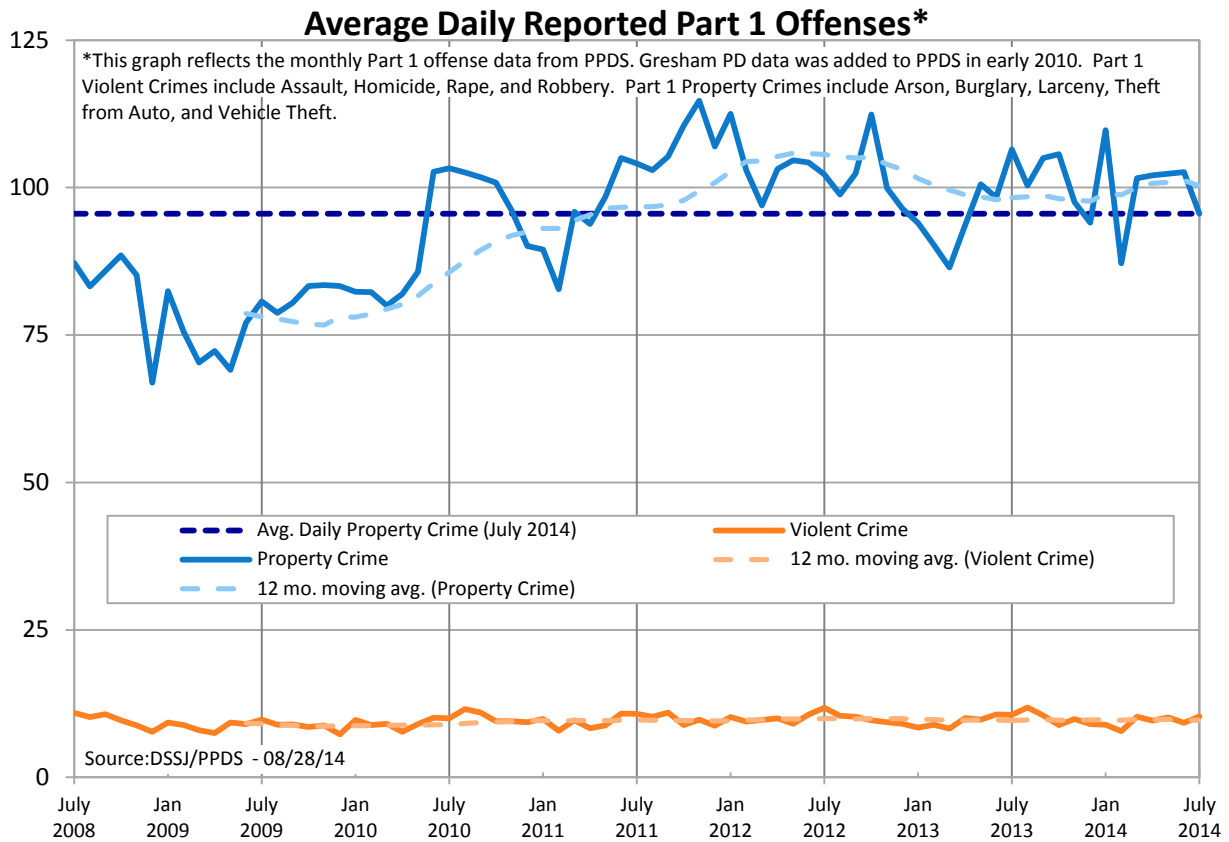
Average July 2014 daily bed use in the jail was 90% of capacity. There have been no emergency releases from the jail in 2014.

The process of integrating data from the Multnomah County Circuit Court's new Odyssey (eCourt) system into DSSJ is ongoing. A few regularly published charts created using Court data are not included in this report due to the transition.



Contact Lauren Brown with questions or concerns lauren.brown@multco.us
Current and past editions of this report are available at www.lpscc.org





Average daily reported Part 1 offenses have decreased in July 2014 when compared to June 2014 and July 2013. An increase in reported assaults during July 2014 led to an overall increase in reported Part 1 violent crime in July when compared to the prior month. There were three reported homicides in July 2014. Year to date, the average daily reported offenses are up in 2014 when compared to 2013. This increase is driven by increases in reported Part 1 property crime, specifically larcenies.

Average Daily Reported Part 1 Offense by Type	July 2014	June 2014	July 2013	YTD 2014	YTD 2013
Part 1 Violent Crime	↑10.3	9.2	10.6	9.5	9.5
Homicide	0.1	0.2	0.1	0.1	0.1
Rape	0.7	0.6	1.1	0.8	0.8
Robbery	2.9	3.3	3.3	2.8	3.0
Assault	↑6.7	5.2	6.1	5.9	5.7
Part 1 Property Crime	95.5	102.6	106.5	↑100.3	95.8
Burglary	13.1	14.0	17.6	13.3	13.4
<i>Residential</i>	6.7	7.6	10.0	7.3	8.0
<i>Other</i>	6.3	6.4	7.6	6.1	5.3
Larceny	72.5	77.6	79.5	↑75.7	71.0
<i>Shoplifting</i>	12.4	13.7	14.5	14.3	13.8
<i>Theft from Auto</i>	↓26.9	32.3	26.0	↑30.5	26.0
<i>Other</i>	33.3	31.5	39.0	30.8	31.1
Motor Vehicle Theft	9.6	10.5	9.0	10.8	10.9
Arson	0.3	0.5	0.3	0.5	0.6
Total Reported Part 1 Crime	↓105.9	111.8	117.0	↑109.8	105.3

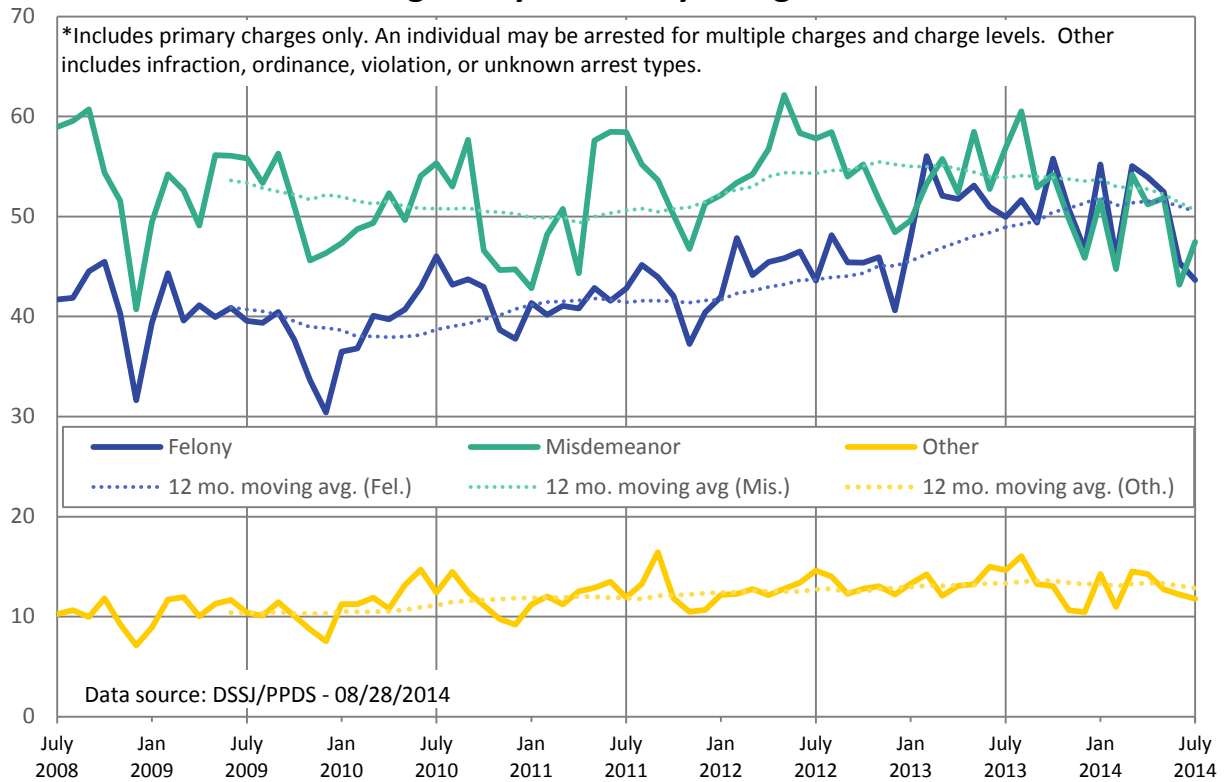
*Reported incident data was pulled on 8/28/14. Due to records entry lag, the counts for the current month are lower than the true total. Year to date (YTD) data is as of July 31st.



Contact Lauren Brown with questions or concerns lauren.brown@multco.us
 Current and past editions of this report are available at www.lpscc.org



Average Daily Arrests by Charge Level*



Total average daily arrests were higher in July 2014 when compared to June 2014 and but considerably lower than July 2013. Year to date, the average daily arrests are down in 2014 when compared 2013 by approximately five arrests per day. The greatest decrease is seen in misdemeanor arrests, with an average of two fewer arrests per day for behavioral, local, and person charges.

Average Daily Arrests by Charge Level and Type	July 2014	June 2014	July 2013	YTD 2014	YTD 2013
Felony	43.6	45.4	50.0	50.3	51.6
Alcohol & Drugs	9.6	8.9	11.5	10.6	12.2
Behavioral	0.6	0.7	1.4	0.9	1.0
Other Charge	0.2	0.1	0.1	0.2	0.2
Fugitive Hold (Warrants)	26.2	28.9	28.6	31.3	29.6
Person (includes DUII)	2.1	1.1	1.9	1.5	1.7
Property	5.0	5.7	6.4	5.9	6.7
Vehicle	0.0	0.0	0.1	0.0	0.1
Misdemeanor	47.5	43.2	56.9	↓49.3	54.2
Alcohol & Drugs	0.0	0.0	0.1	0.0	0.1
Behavioral	8.0	6.9	8.8	↓7.9	9.0
Local	9.1	6.9	10.5	↓7.2	9.3
Other Charge	1.4	1.2	1.8	1.5	1.3
Person (includes DUII)	11.7	11.9	14.1	↓12.8	14.7
Property	16.6	15.8	20.6	19.0	19.0
Vehicle	0.6	0.5	0.9	0.7	0.8
Other Charge Levels	11.8	12.2	14.6	13.0	13.6
Total Arrests	102.9	100.8	121.5	↓112.5	119.4

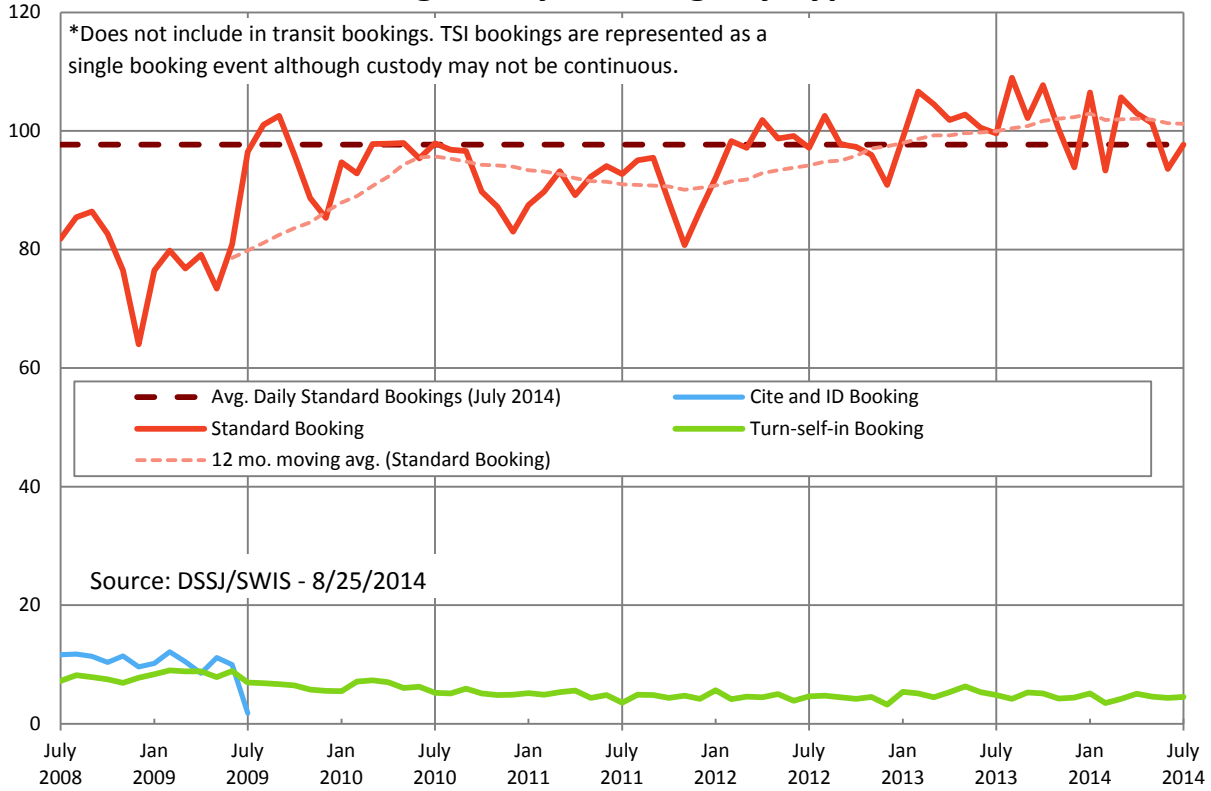
*Arrest data was pulled on 8/28/14. Due to records entry lag, the counts for the current month are lower than the true total. Year to date (YTD) data is as of July 31st.



Contact Lauren Brown with questions or concerns lauren.brown@multco.us
 Current and past editions of this report are available at www.lpscc.org



Average Daily Bookings by Type*



Average daily standard bookings increased in July 2014 when compared to June 2014. Increases were seen in both felony and misdemeanor bookings. Year to date, average daily bookings are down slightly in 2014 when compared 2013.

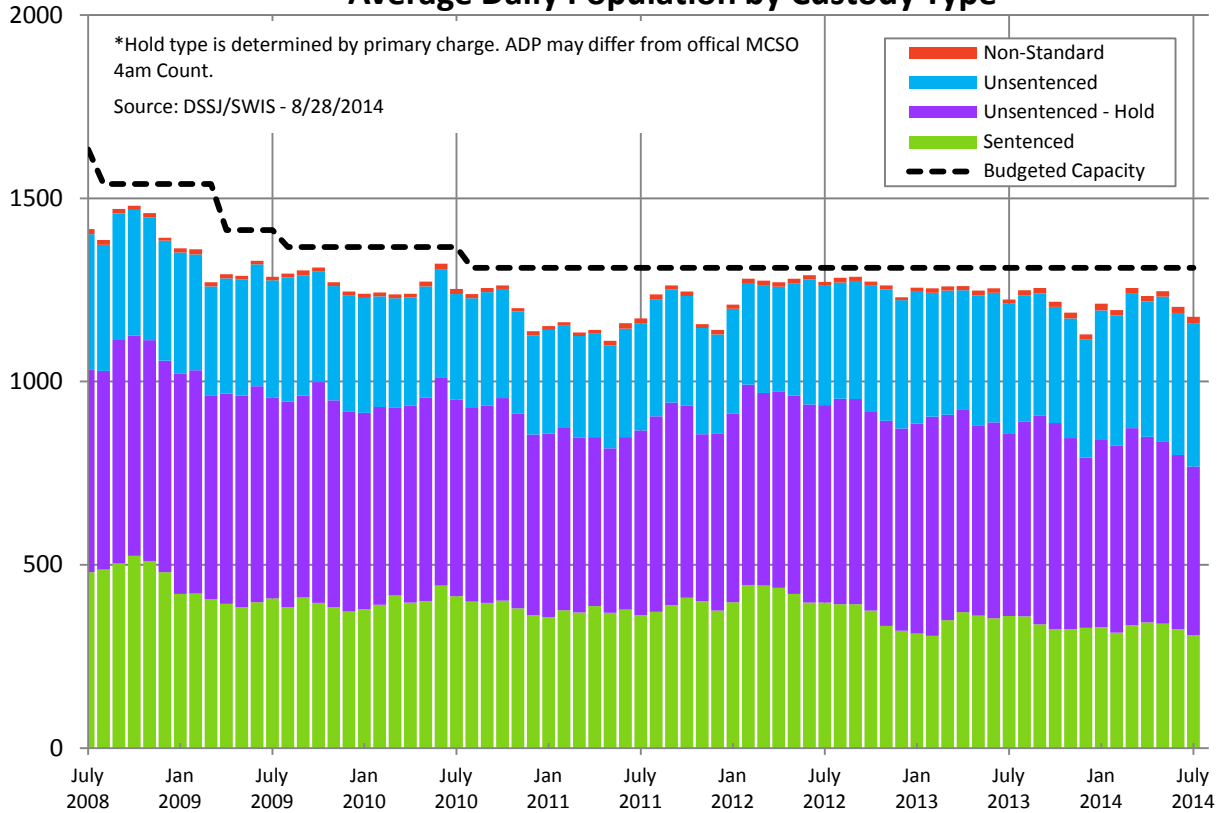
Average Daily Bookings by Charge Level and Type	July 2014	June 2014	July 2013	YTD 2014	YTD 2013
Felony	↑23.9	22.6	22.4	23.7	23.0
Alcohol & Drugs	9.2	9.2	8.6	9.8	9.6
Behavioral	1.3	1.3	1.5	1.5	1.4
Other Charge	1.3	0.9	1.0	1.0	0.9
Person (includes DUII)	4.6	3.9	4.1	4.0	4.0
Property	7.3	6.7	6.9	6.9	6.7
Vehicle	0.3	0.6	0.3	0.4	0.3
Misdemeanor	↑42.6	40.5	44.9	44.3	46.7
Alcohol & Drugs	0.5	0.4	0.7	0.5	0.6
Behavioral	10.2	8.4	11.0	9.7	10.7
Local	1.1	1.2	2.6	1.1	1.9
Other Charge	2.4	2.3	2.2	2.4	2.0
Person (includes DUII)	12.7	11.5	12.7	13.1	14.6
Property	13.5	14.3	13.6	15.3	14.7
Vehicle	2.2	2.4	2.1	2.1	2.2
Other Charge Levels	0.9	0.7	0.3	0.6	0.5
Probation Violations	11.5	11.8	11.4	12.0	11.2
Holds	18.8	17.9	20.5	19.6	20.5
Total Standard Bookings	↑97.7	93.6	99.5	100.3	101.9



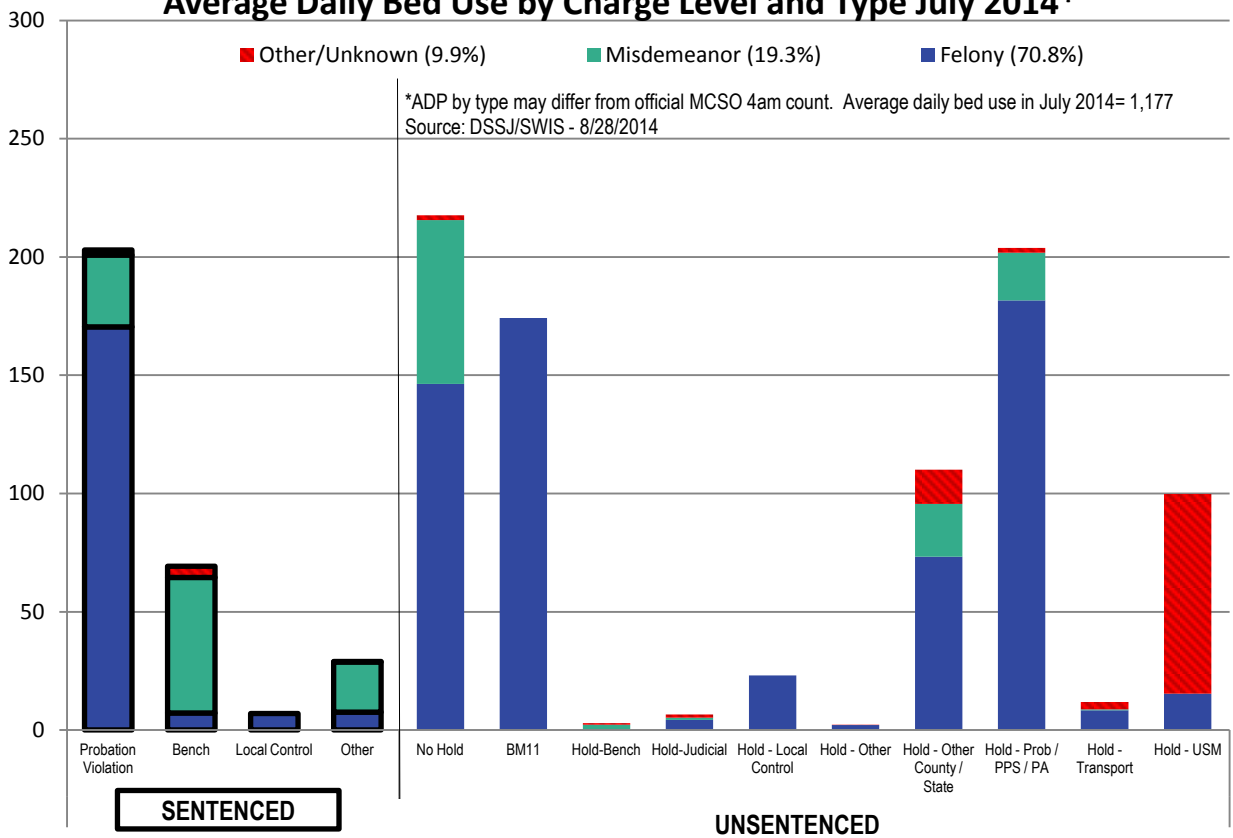
Contact Lauren Brown with questions or concerns lauren.brown@multco.us
 Current and past editions of this report are available at www.lpscc.org



Average Daily Population by Custody Type*



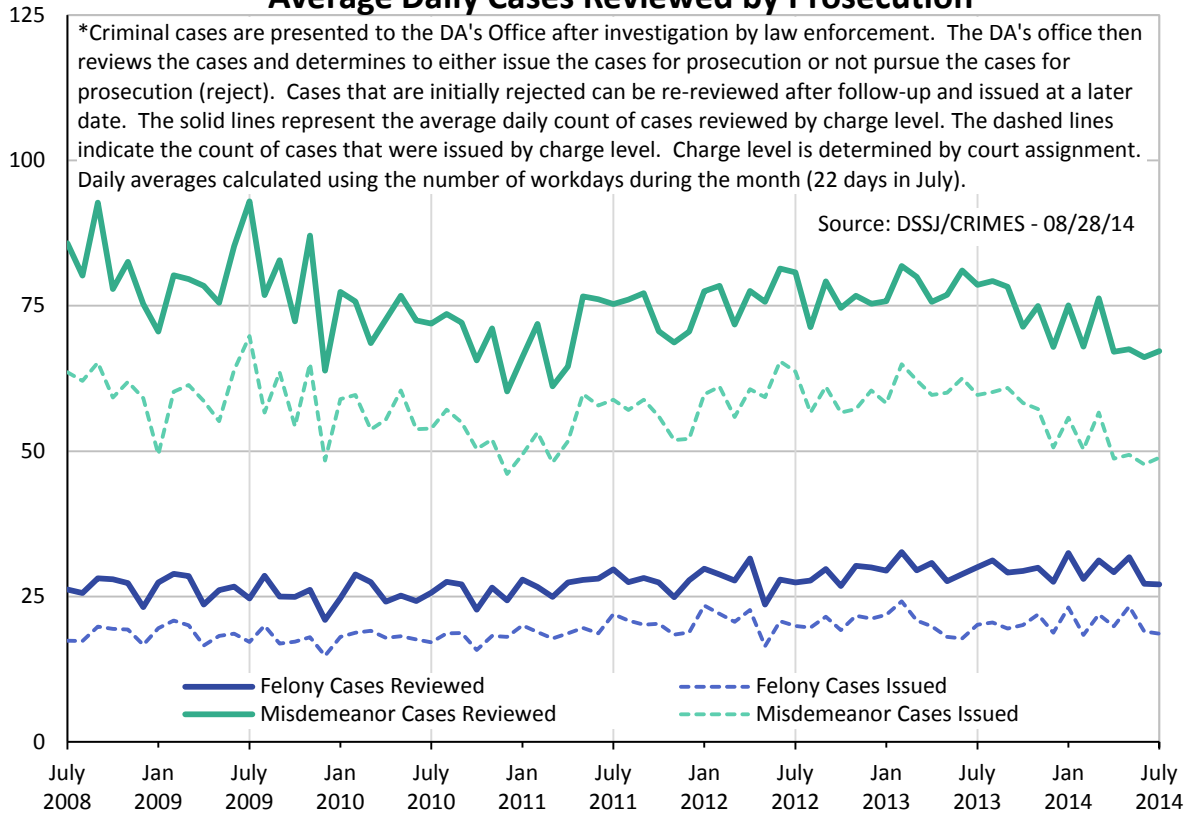
Average Daily Bed Use by Charge Level and Type July 2014*



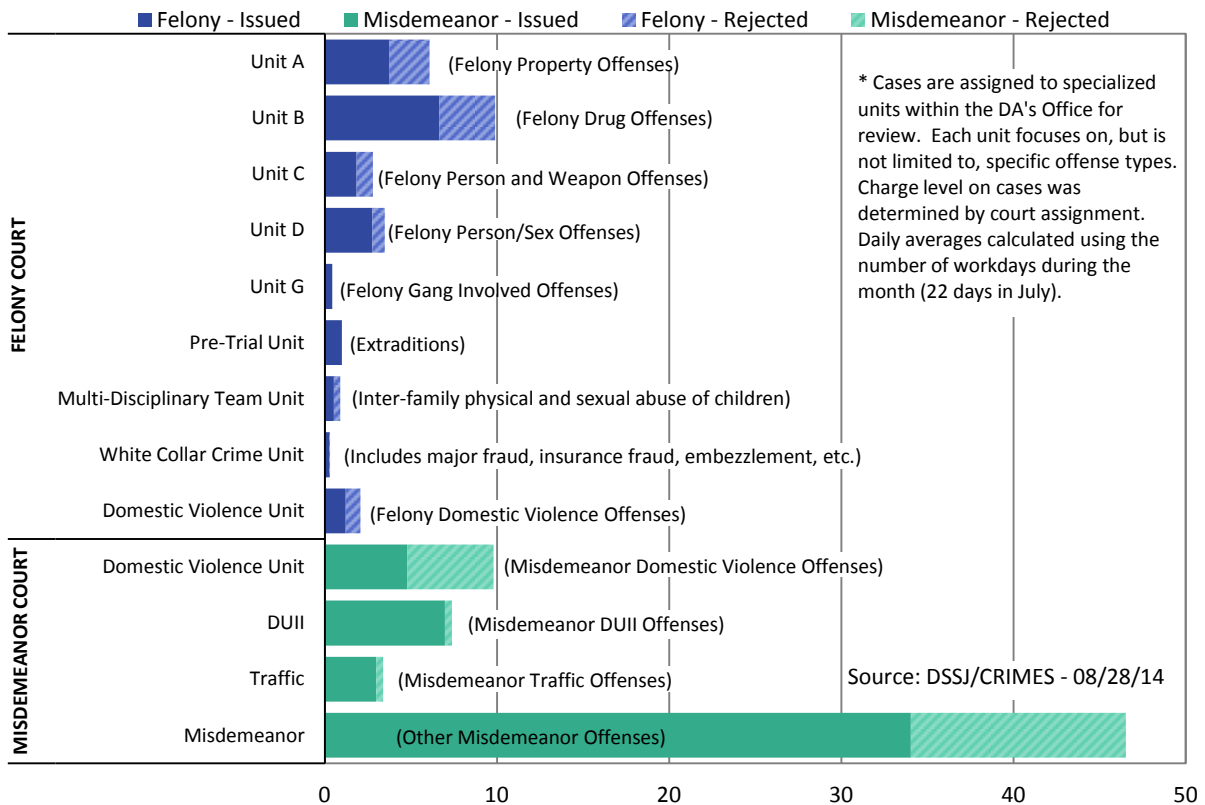
Contact Lauren Brown with questions or concerns lauren.brown@multco.us
Current and past editions of this report are available at www.lpscc.org



Average Daily Cases Reviewed by Prosecution



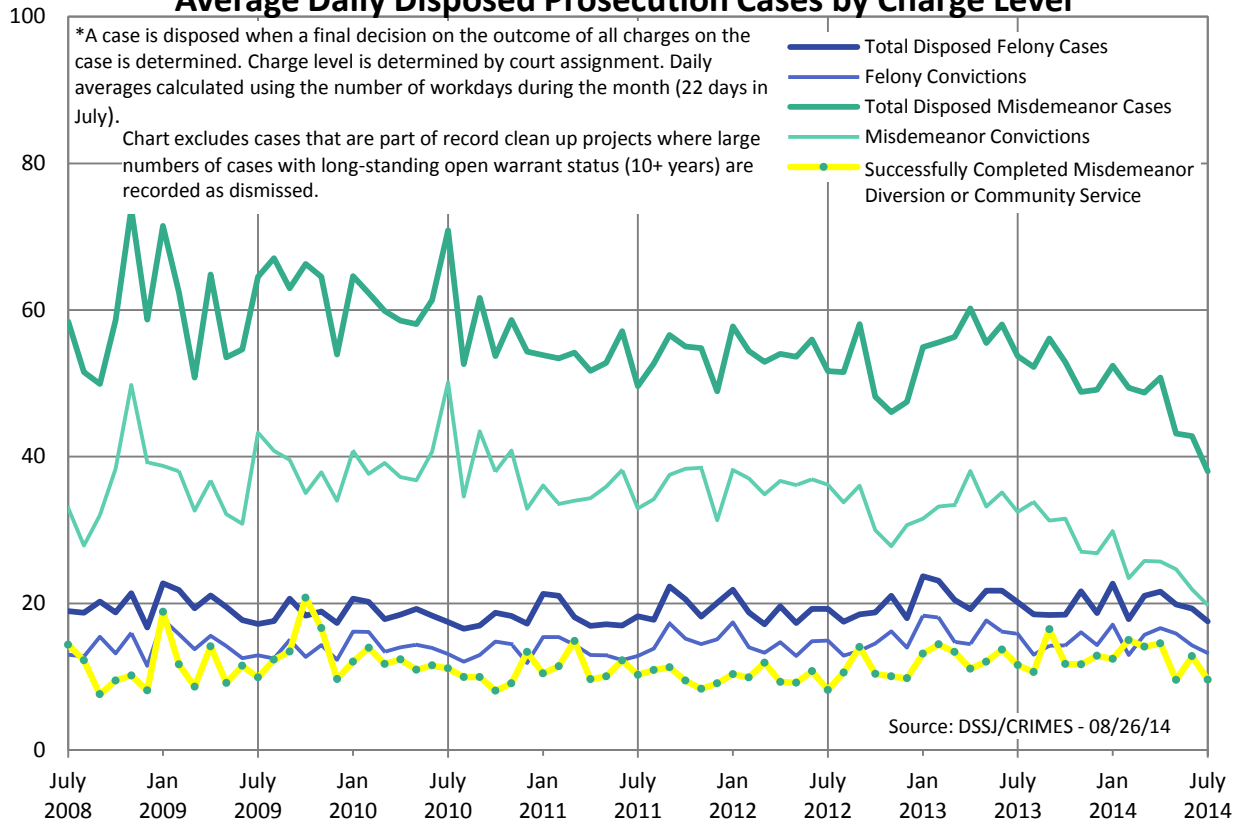
Average Daily Case Review Outcome by DA Unit - July 2014



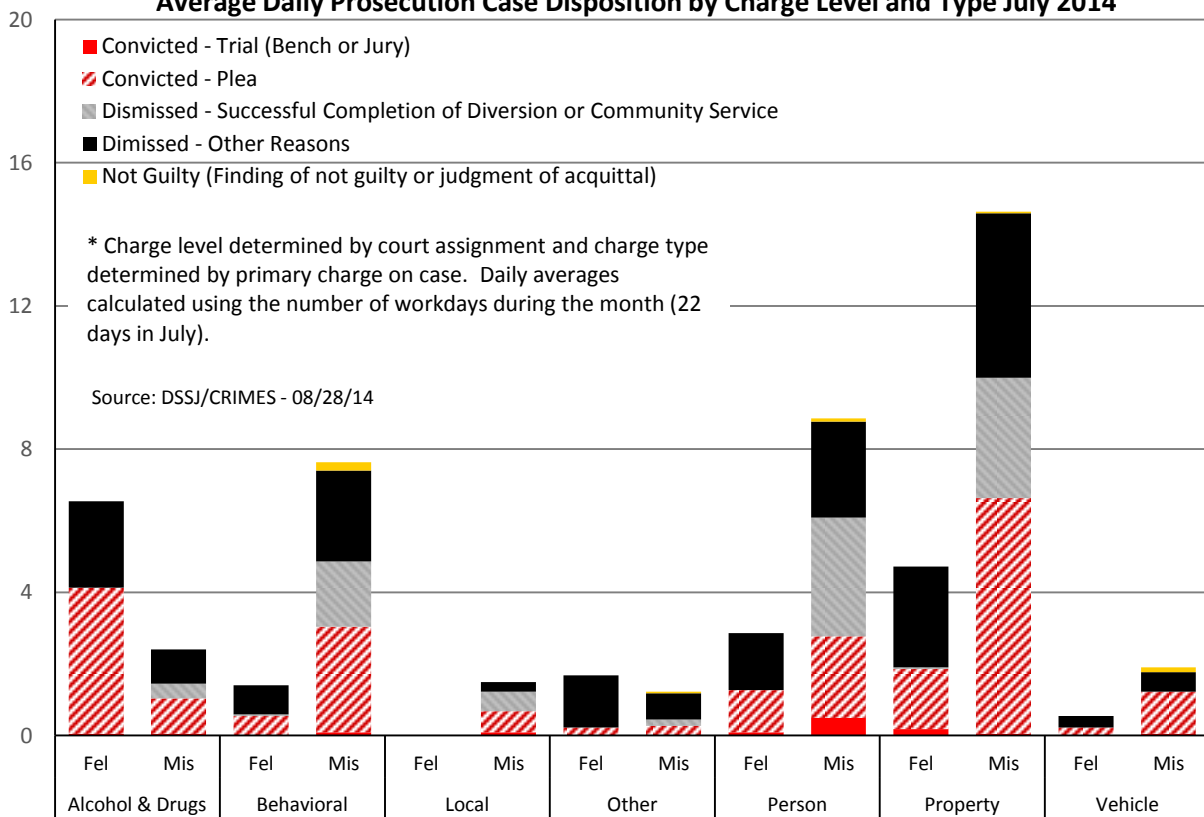
Contact Lauren Brown with questions or concerns lauren.brown@multco.us
 Current and past editions of this report are available at www.lpscc.org



Average Daily Disposed Prosecution Cases by Charge Level*



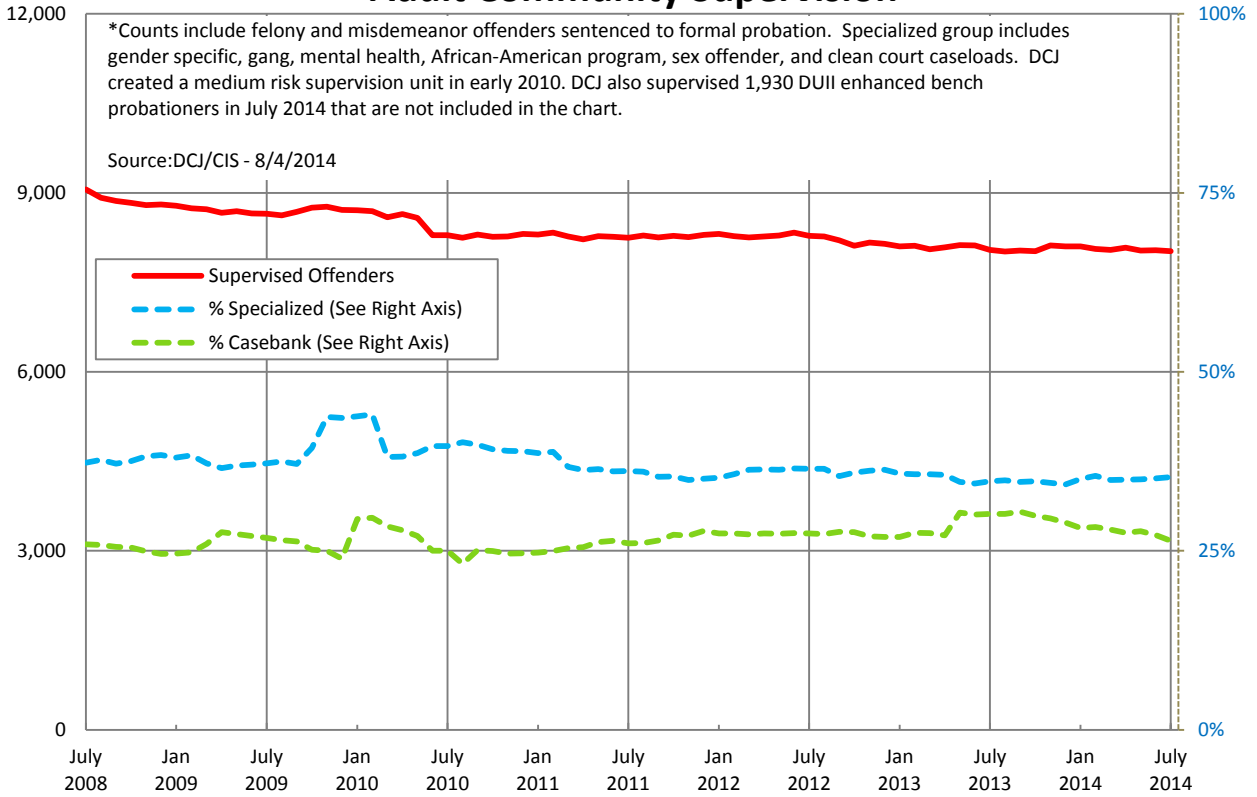
Average Daily Prosecution Case Disposition by Charge Level and Type July 2014



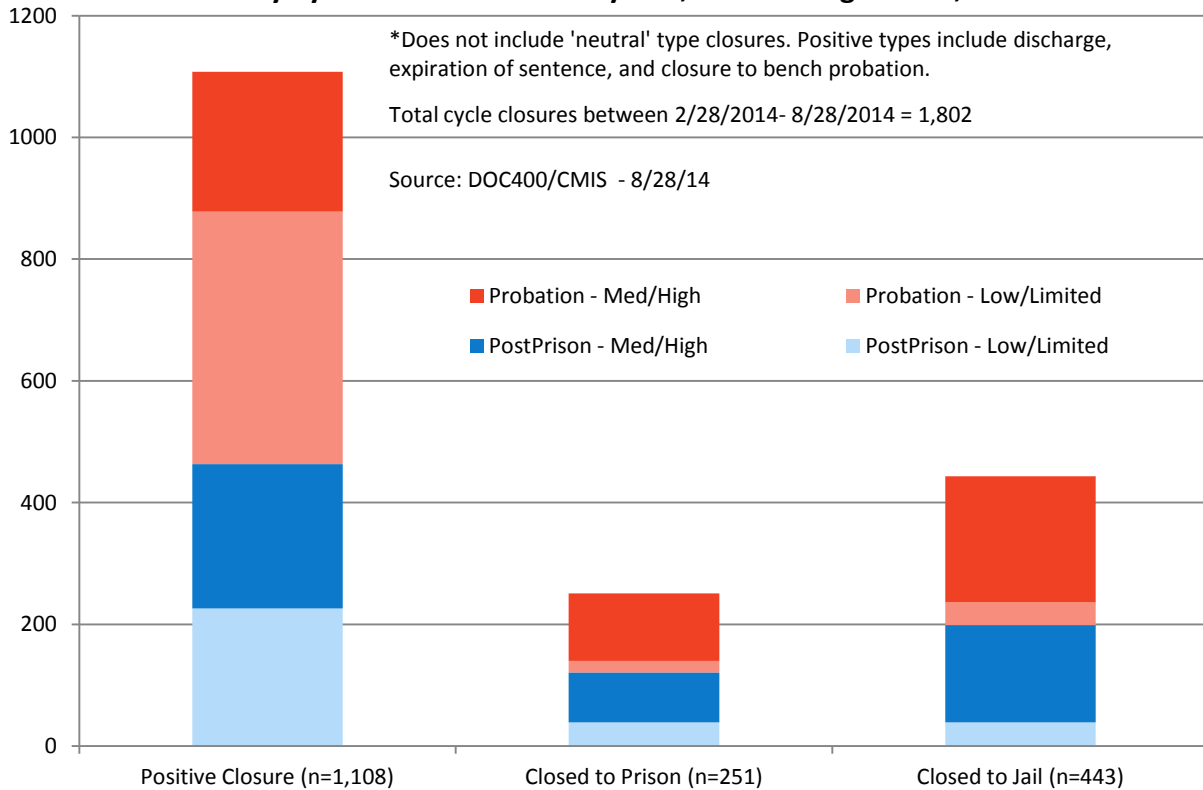
Contact Lauren Brown with questions or concerns lauren.brown@multco.us
 Current and past editions of this report are available at www.lpscc.org



Adult Community Supervision*



Custody Cycle Closures - February 28th, 2014 to August 28th, 2014*



Contact Lauren Brown with questions or concerns lauren.brown@multco.us
 Current and past editions of this report are available at www.lpscc.org

