



Local Public Safety Coordinating Council of Multnomah County

Public Safety Trends Summary

The Public Safety Trends document provides an executive level summary of operational data for many of the decision points and agencies in Multnomah County's public safety system. The statistics in the Report are compiled from the Decision Support System – Justice (DSSJ) data warehouse.

October 2014

Dear Reader,

Welcome to the Public Safety Trends Summary Report produced by Multnomah County's Local Public Safety Coordinating Council (LPSCC). The purpose of this report is to provide an executive level summary of operational data for many of the decision points in the County's Public Safety System for the Council's Executive Committee, partner agency staff, and members of the public.

The statistics detailed in this report are sourced from the County's Decision Support System – Justice data warehouse (DSSJ). The data contained in DSSJ is sourced from the host agency systems and is regularly audited for accuracy. Additionally, the data presented in this report is regularly reviewed by the owner agency analysts for consistency and clarity.

The Report provides both long-term trend data and short-term descriptive statistics. The long-term trends section provides a description of how certain types of events, case types, and charge levels have changed over time. The short-term trends section provides a more detailed description of the data presented in the long-term trend section. Measures of reported Incidents, Arrest, Disposition, and Sentencing are reported at the case unit level. Measures for Booking and Custody are reported at the person level.

The Public Safety Trends Report is produced on a regular basis and serves as a starting point for broader investigations of trends in local public safety. Frequently, the Report will contain a special analysis section providing a systems perspective of specific areas in the local public safety system.

Lauren Brown
LPSCC Analyst

Items of Note and Updates

Average daily reported Part 1 incidents, arrests, bookings, custodies, cases reviewed and issued by prosecution, and cases disposed all decreased in October 2014.

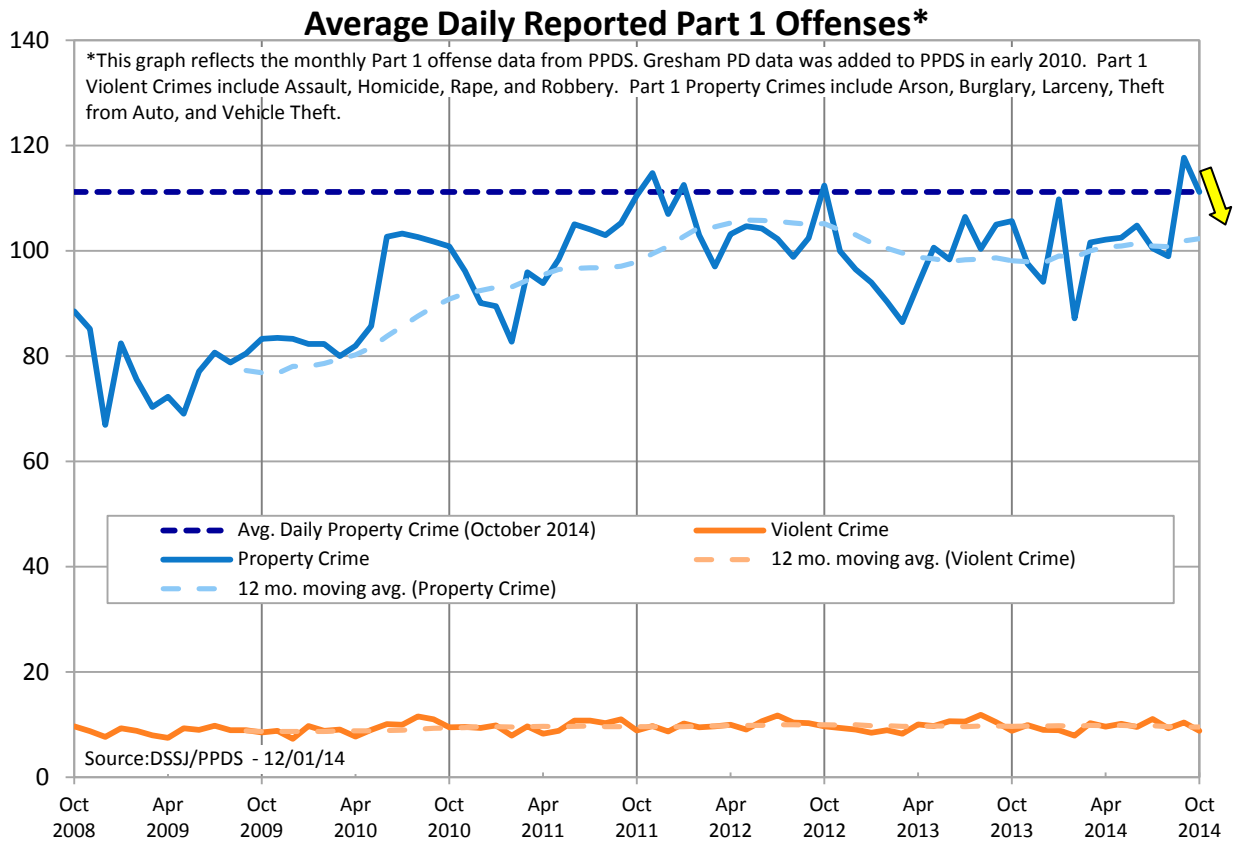
Year to date, average daily reported Part 1 crime had increased in 2014 when compared to 2013. Felony arrests, bookings, cases reviewed and issued by prosecution, and cases disposed had remained stable in 2014 when compared 2013. Decreasing trends were seen in 2014 for the same measures related to misdemeanor offenses.

The process of integrating data from the Multnomah County Circuit Court's new Odyssey (eCourt) system into DSSJ is ongoing. A few regularly published charts created using Court data are not included in this report due to the transition.



Contact Lauren Brown with questions or concerns lauren.brown@multco.us
Current and past editions of this report are available at www.lpscc.org





There were five reported homicides in October 2014. As of October 31, twenty-five homicides were reported in 2014 compared to twenty during the same period in 2013. Reported Part 1 Crime decreased in October 2014 after peaking in September due to increases in reported larcenies. Year to date, the average daily reported offenses were up in 2014 when compared to 2013. The increase was also driven by increases in reported Part 1 property crime, specifically larcenies – theft from auto.

Average Daily Reported Part 1 Offense by Type	October 2014	September 2014	October 2013	YTD 2014	YTD 2013
Part 1 Violent Crime	8.8	10.4	8.8	9.6	9.8
Homicide	0.16	0.03	0.16	0.08	0.07
Rape	0.5	0.9	0.6	0.8	0.8
Robbery	2.4	3.0	3.2	2.8	3.1
Assault	5.7	6.5	4.9	6.0	5.8
Part 1 Property Crime	↓111.2	117.7	105.6	↑103.7	98.1
Burglary	↓13.3	14.6	13.0	13.5	13.3
Residential	8.0	8.7	7.0	7.6	7.8
Other	5.3	5.9	6.0	6.0	5.5
Larceny	↓85.0	90.8	79.8	↑78.6	73.3
Shoplifting	13.7	14.5	16.3	14.4	14.2
Theft from Auto	38.2	39.6	29.6	↑32.3	26.4
Other	33.1	36.7	34.0	31.9	32.8
Motor Vehicle Theft	12.5	11.8	12.2	11.1	10.9
Arson	0.4	0.4	0.6	0.5	0.6
Total Reported Part 1 Crime	↓120.0	128.1	114.5	↑113.4	107.9

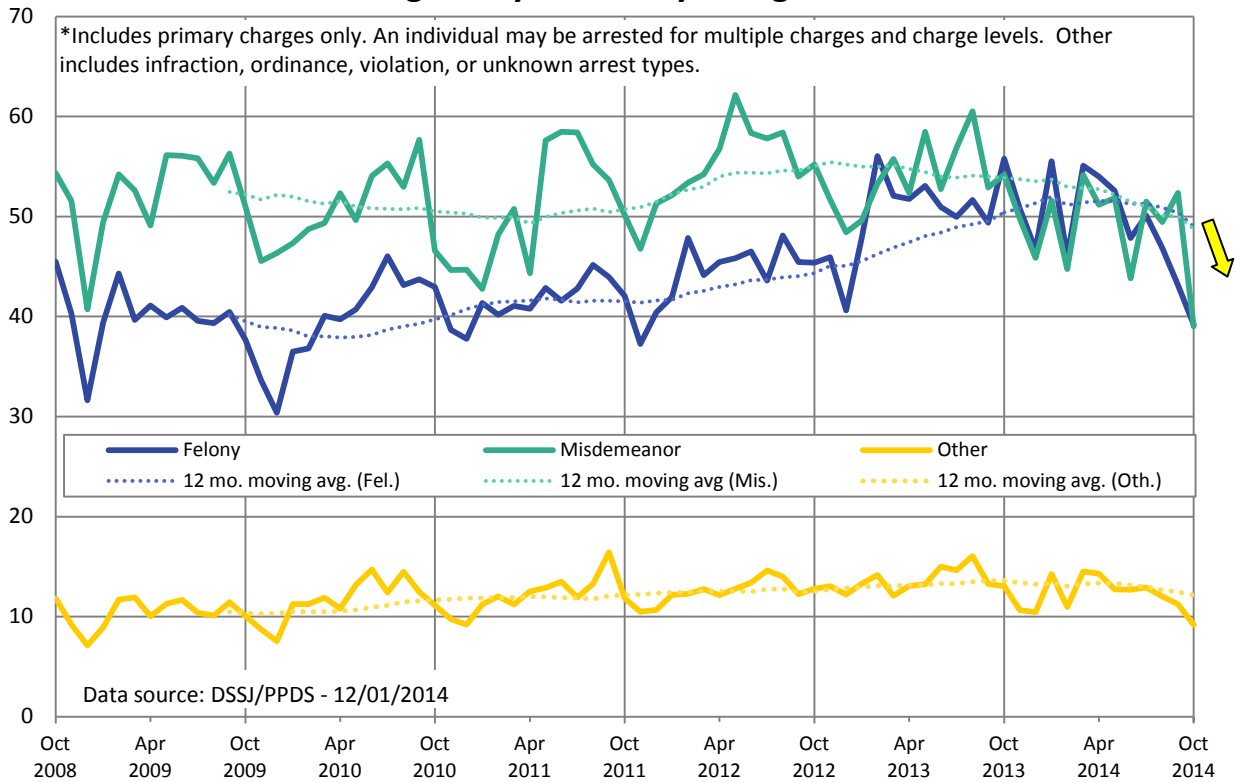
*Reported incident data was pulled on 11/24/14. Due to records entry lag, the counts for the current month may be lower than the true total. Year to date (YTD) data is as of October 31st.



Contact Lauren Brown with questions or concerns lauren.brown@multco.us
 Current and past editions of this report are available at www.lpscc.org



Average Daily Arrests by Charge Level*



Total average daily arrests in October 2014 were considerably lower than the prior month (September 2014) and October of the prior year (2013). Year to date, the average daily arrests were lower in 2014 than 2013, with the largest decrease seen in misdemeanor arrests.

Average Daily Arrests by Charge Level and Type	October 2014	September 2014	October 2013	YTD 2014	YTD 2013
Felony	↓39.2	43.1	55.8	49.1	51.8
Alcohol & Drugs	8.6	8.9	14.2	10.2	12.2
Behavioral	0.6	0.8	1.0	0.8	1.0
Other Charge	0.4	0.3	0.2	0.2	0.2
Fugitive Hold (Warrants)	23.6	26.4	33.0	30.5	30.1
Person (includes DUII)	1.2	1.6	1.5	1.5	1.7
Property	4.7	5.2	5.8	5.7	6.4
Vehicle	0.1	0.0	0.1	0.0	0.1
Misdemeanor	↓39.0	52.4	54.2	↓49.0	54.7
Alcohol & Drugs	0.1	0.0	0.2	0.0	0.1
Behavioral	5.9	7.9	8.0	7.7	8.9
Local	5.7	11.1	9.4	7.7	9.6
Other Charge	1.1	1.4	1.6	1.4	1.4
Person (includes DUII)	10.8	12.9	12.5	12.9	14.4
Property	15.1	18.3	21.9	18.6	19.5
Vehicle	0.5	0.8	0.6	0.7	0.8
Other Charge Levels	9.2	11.3	13.0	12.5	13.8
Total Arrests	↓87.4	106.8	122.9	↓110.6	120.3

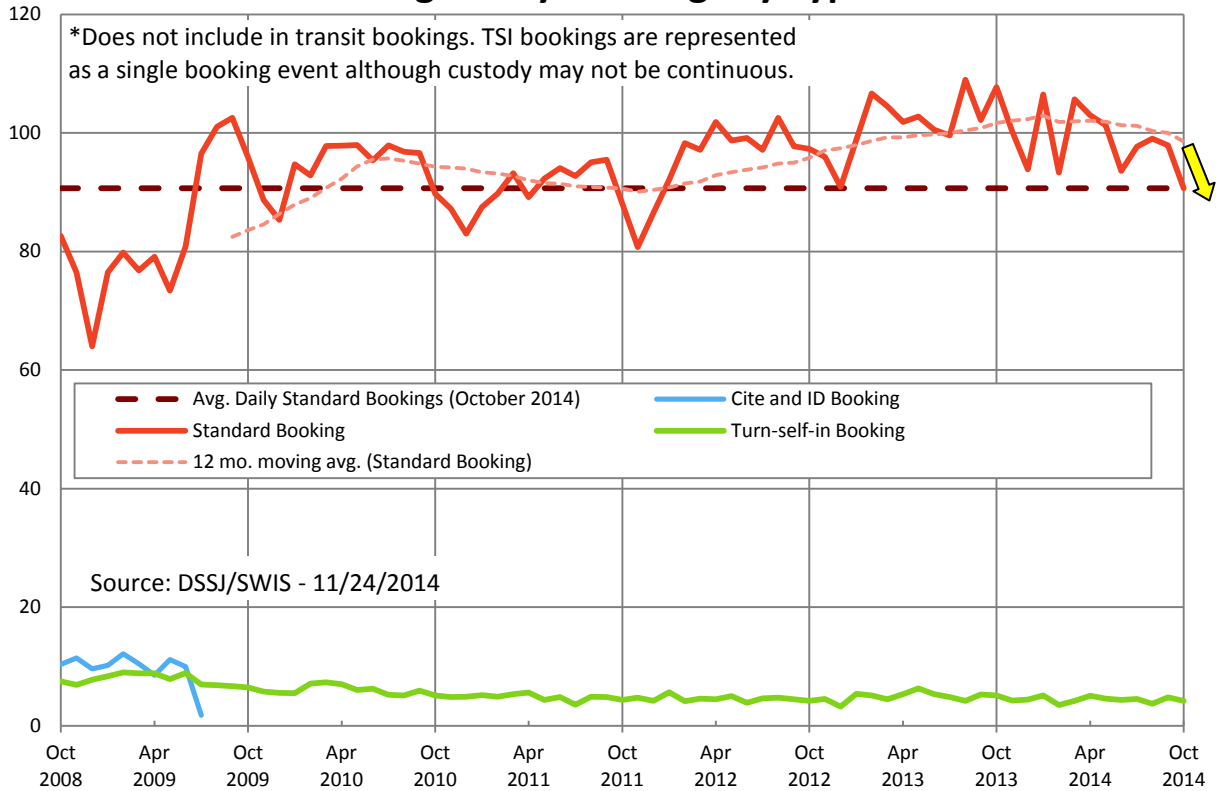
*Arrest data was pulled on 11/24/14. Due to records entry lag, the counts for the current month may be lower than the true total. Year to date (YTD) data is as of October 31st.



Contact Lauren Brown with questions or concerns lauren.brown@multco.us
 Current and past editions of this report are available at www.lpscc.org



Average Daily Bookings by Type*



There were approximately seven fewer bookings on average per day in October 2014 when compared to September 2014 and seventeen fewer when compared to October of the prior year (2013). Year to date, average daily bookings were down in 2014 when compared to 2013, with the biggest decrease seen in bookings related to misdemeanor charges.

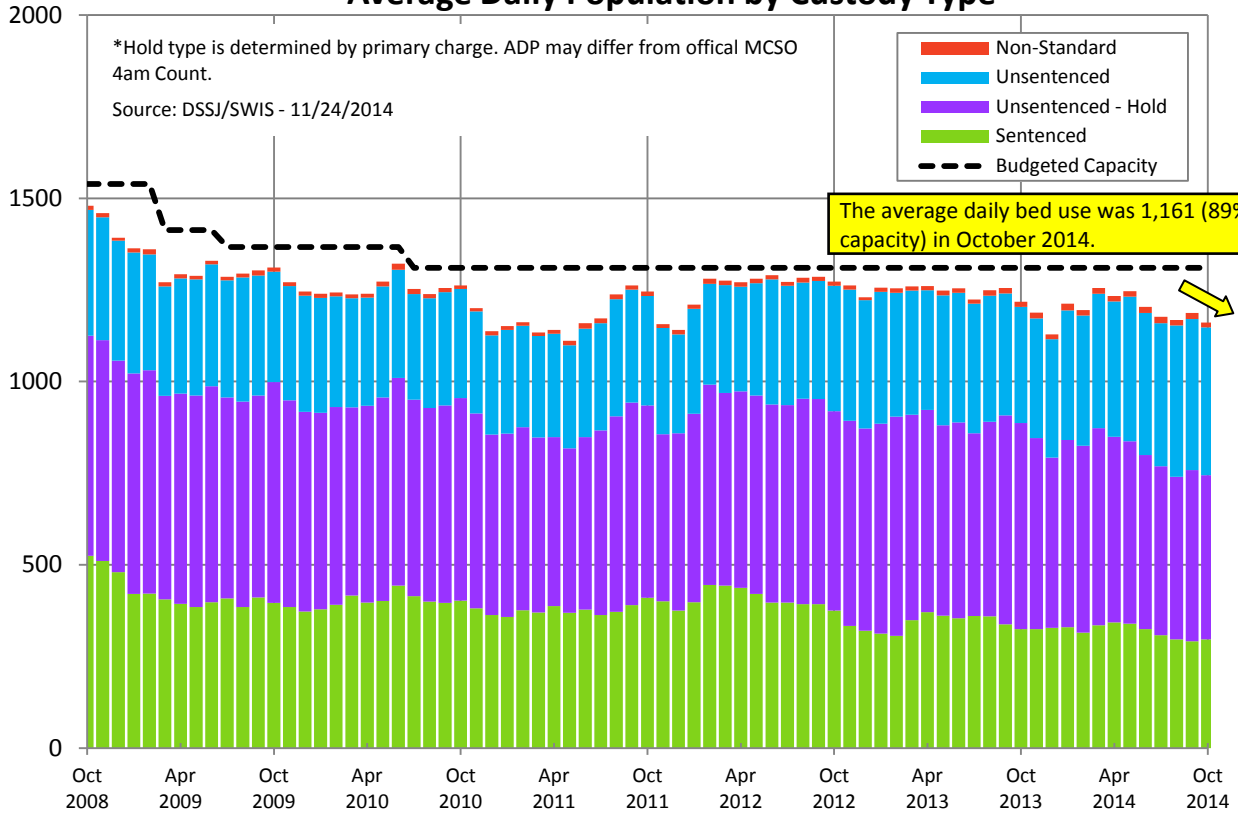
Average Daily Bookings by Charge Level and Type	October 2014	September 2014	October 2013	YTD 2014	YTD 2013
Felony	↓22.7	24.3	25.3	23.5	23.5
Alcohol & Drugs	7.9	9.4	11.3	9.5	9.9
Behavioral	1.7	1.8	1.7	1.6	1.5
Other Charge	1.0	1.0	1.4	1.0	1.0
Person (includes DUII)	4.1	4.2	3.5	4.0	4.0
Property	7.6	7.5	7.1	7.0	6.8
Vehicle	0.4	0.4	0.4	0.4	0.3
Misdemeanor	↓37.8	43.4	46.8	↓43.6	47.1
Alcohol & Drugs	0.3	0.4	0.6	0.5	0.5
Behavioral	8.4	8.7	9.7	9.5	10.7
Local	0.8	1.0	2.4	1.0	2.1
Other Charge	2.3	2.5	2.3	2.4	2.1
Person (includes DUII)	11.3	14.5	12.4	13.2	14.2
Property	13.2	14.4	17.4	15.1	15.3
Vehicle	1.6	1.8	2.0	2.0	2.1
Other Charge Levels	0.6	0.7	0.5	0.6	0.5
Probation Violations	12.5	12.6	12.5	12.2	11.3
Holds	17.1	17.0	22.6	18.9	20.8
Total Standard Bookings	↓90.7	98.0	107.7	↓98.9	103.2



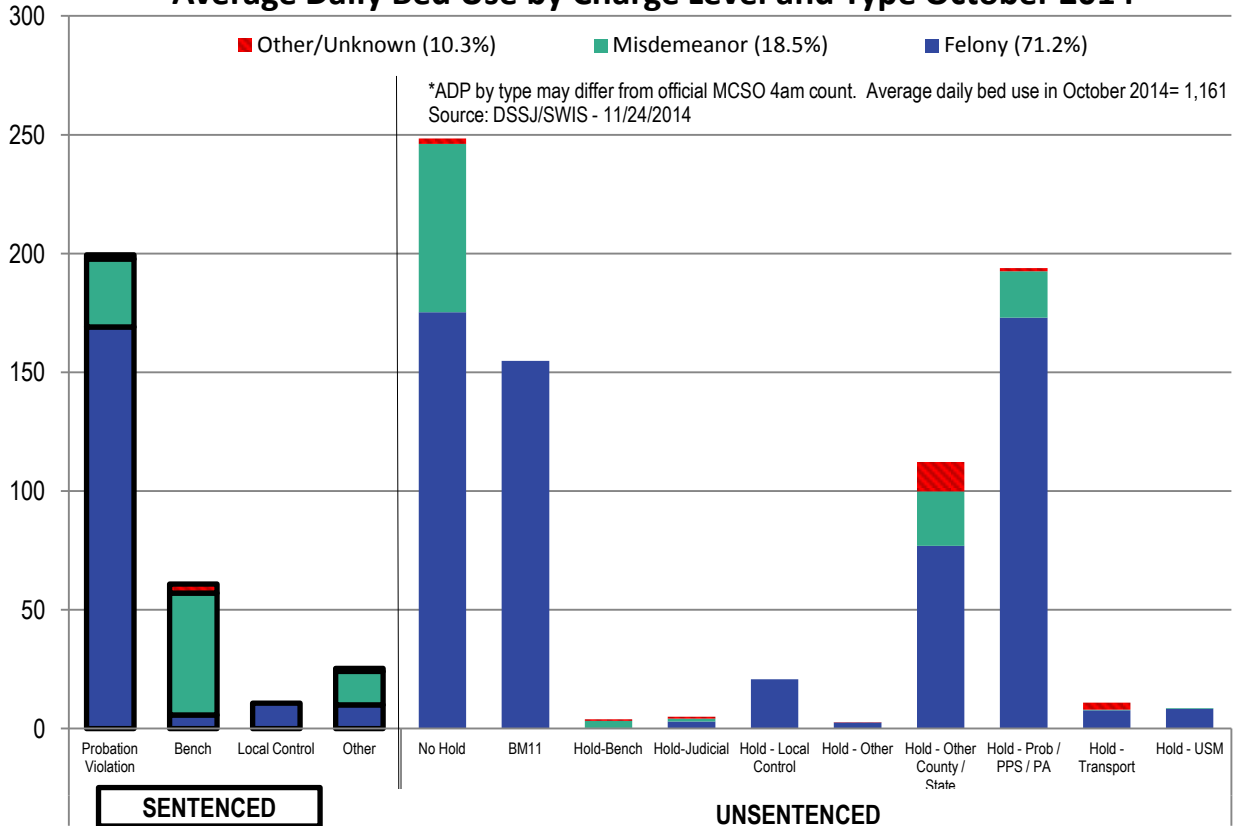
Contact Lauren Brown with questions or concerns lauren.brown@multco.us
 Current and past editions of this report are available at www.lpscc.org



Average Daily Population by Custody Type*



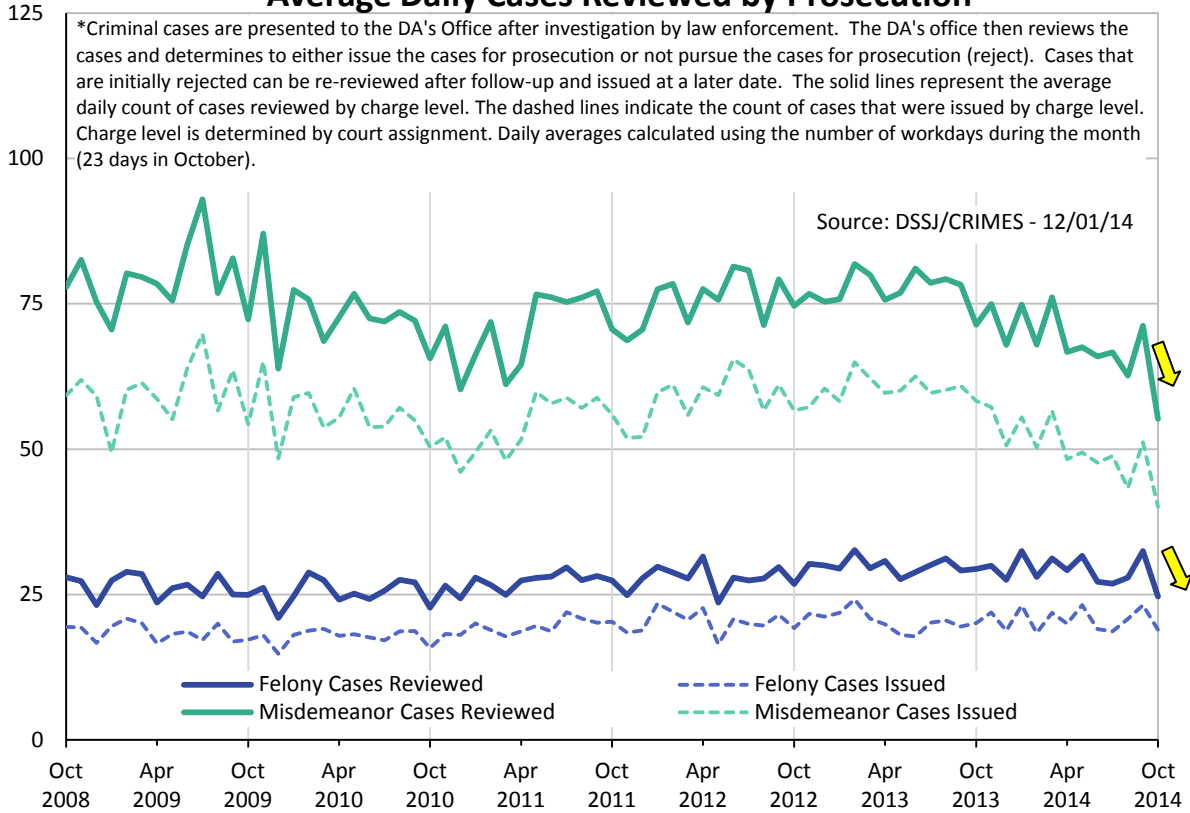
Average Daily Bed Use by Charge Level and Type October 2014*



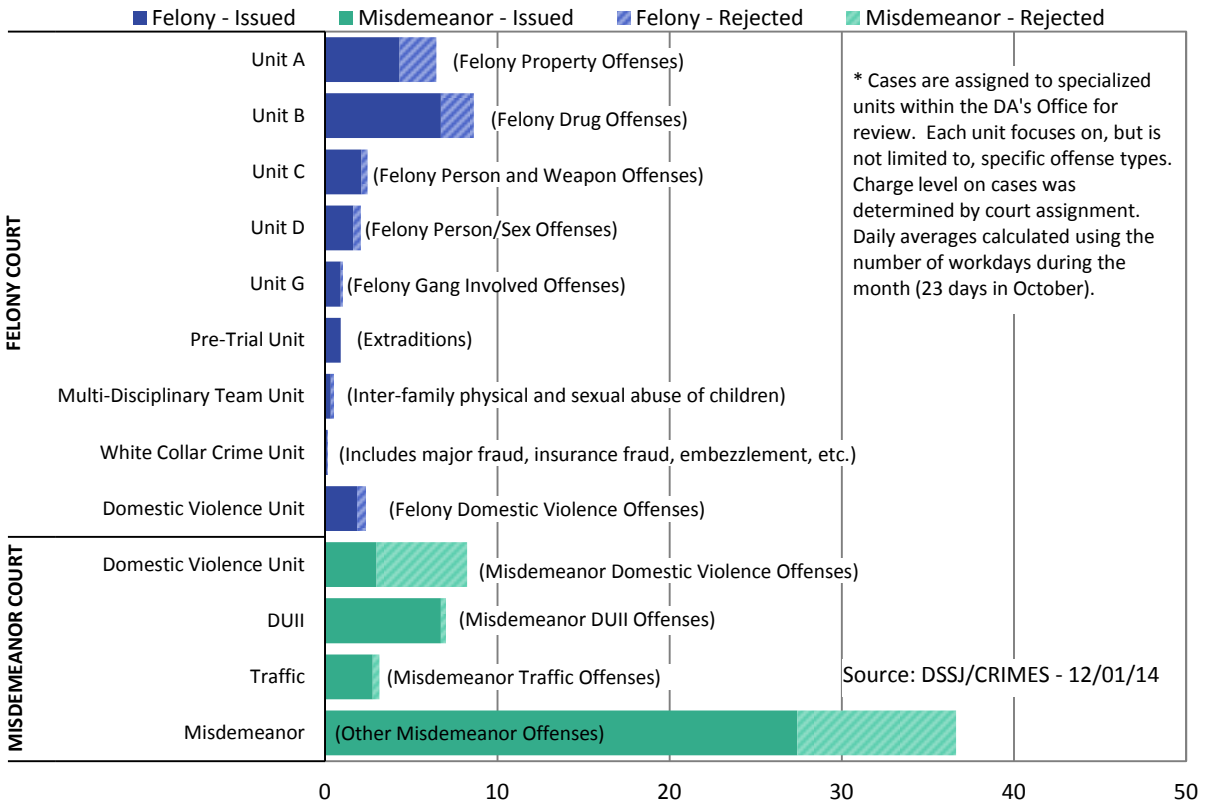
Contact Lauren Brown with questions or concerns lauren.brown@multco.us
Current and past editions of this report are available at www.lpscc.org



Average Daily Cases Reviewed by Prosecution



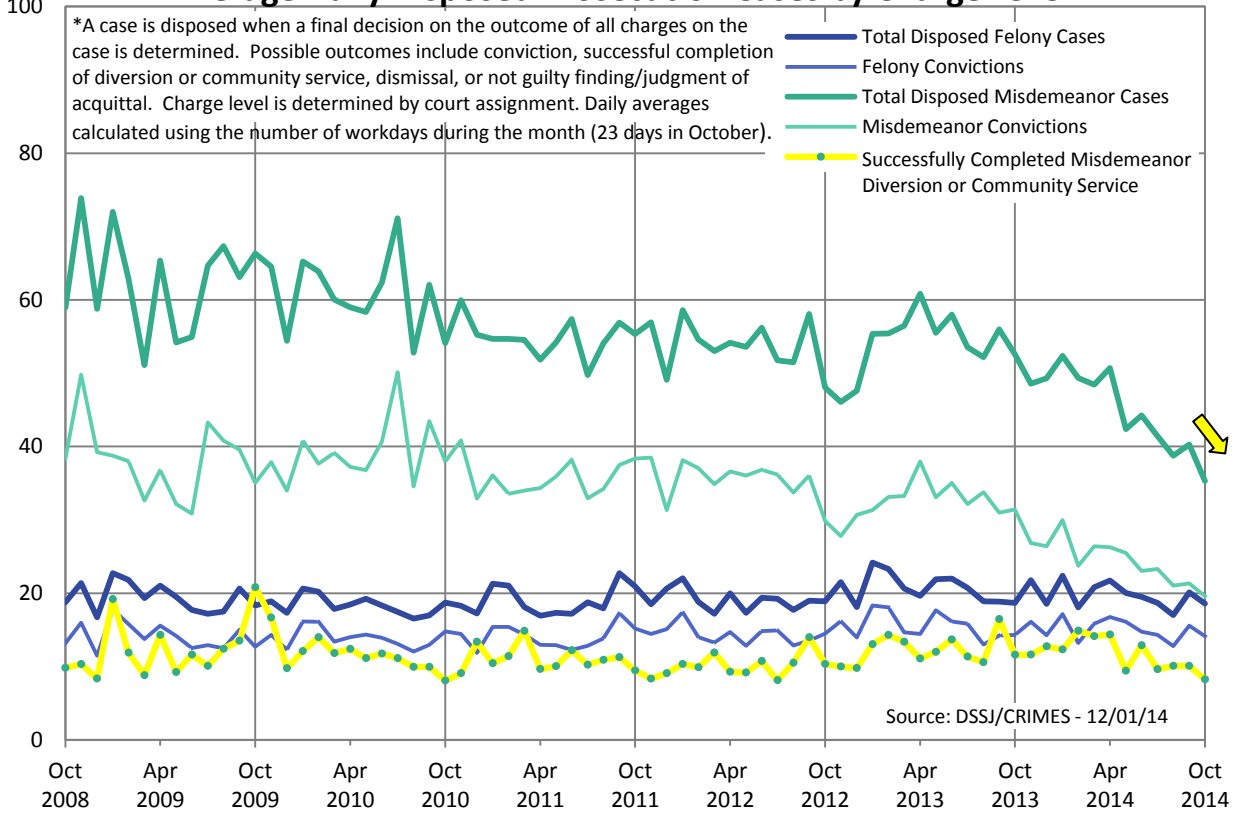
Average Daily Case Review Outcome by DA Unit - October 2014



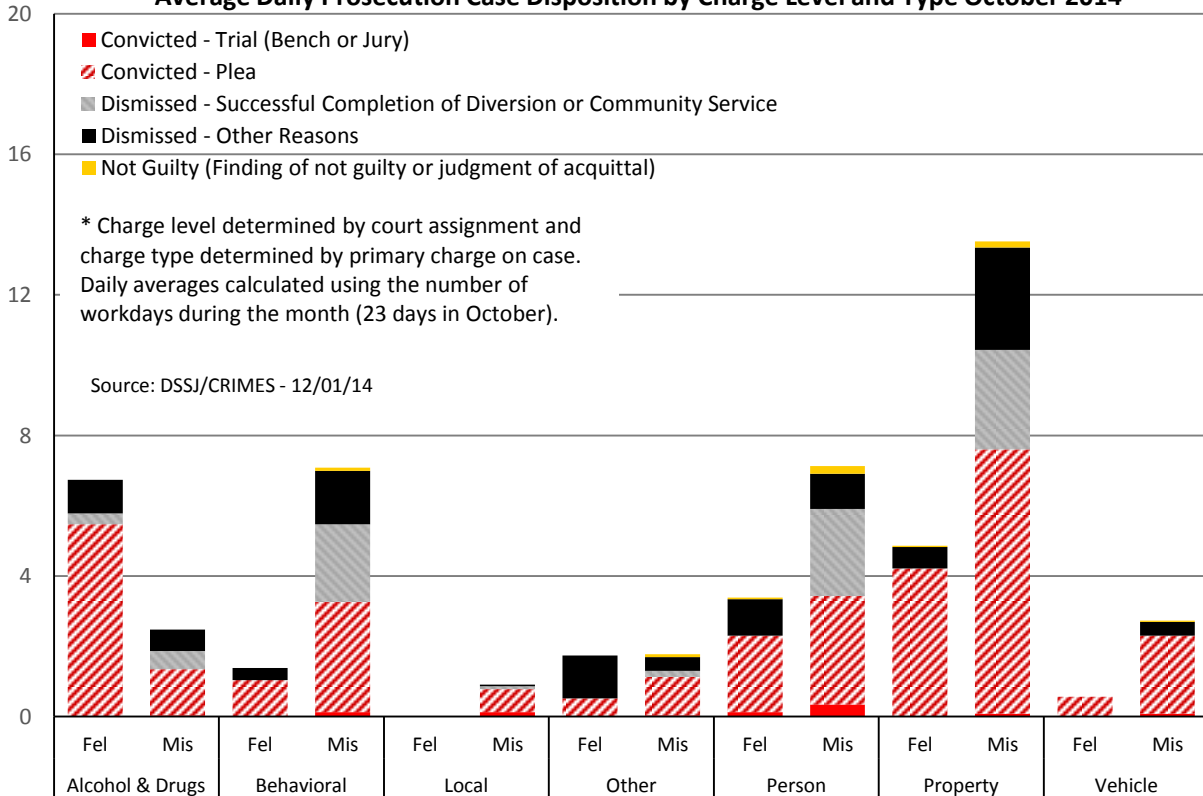
Contact Lauren Brown with questions or concerns lauren.brown@multco.us
 Current and past editions of this report are available at www.lpscc.org



Average Daily Disposed Prosecution Cases by Charge Level*



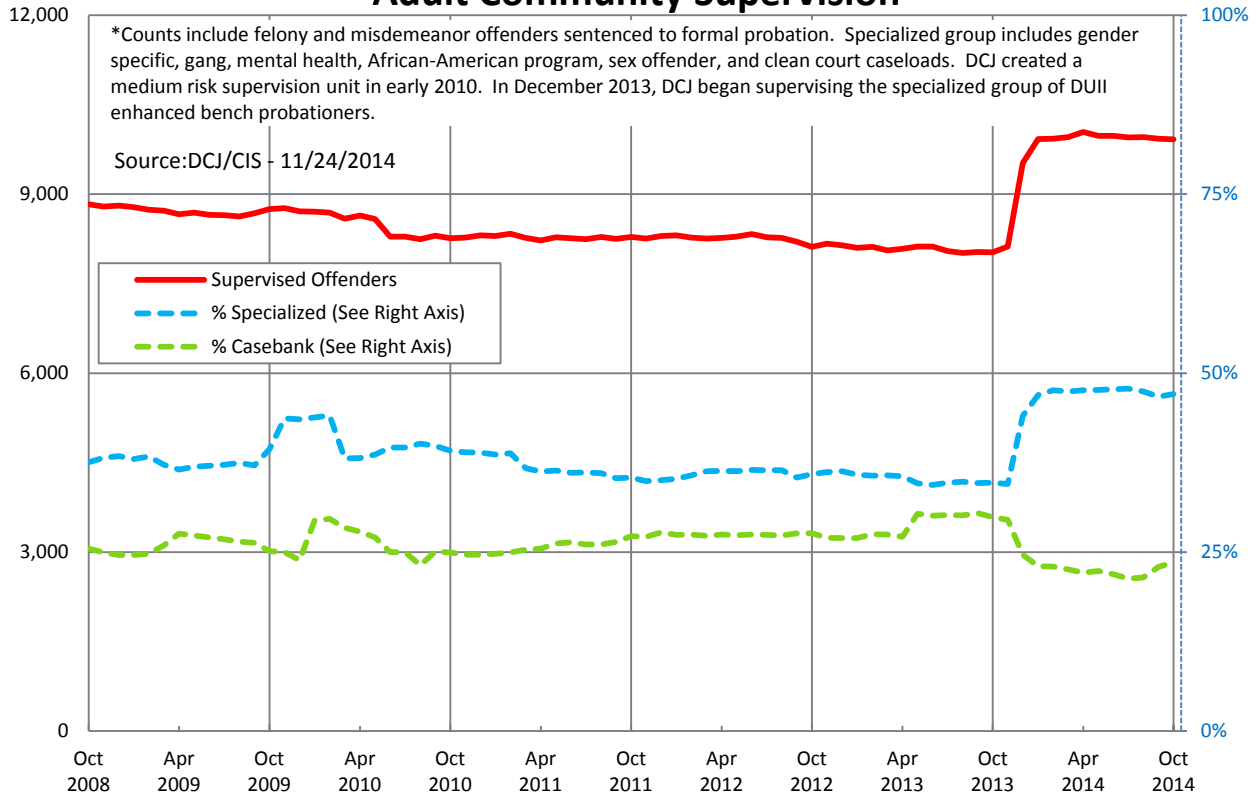
Average Daily Prosecution Case Disposition by Charge Level and Type October 2014



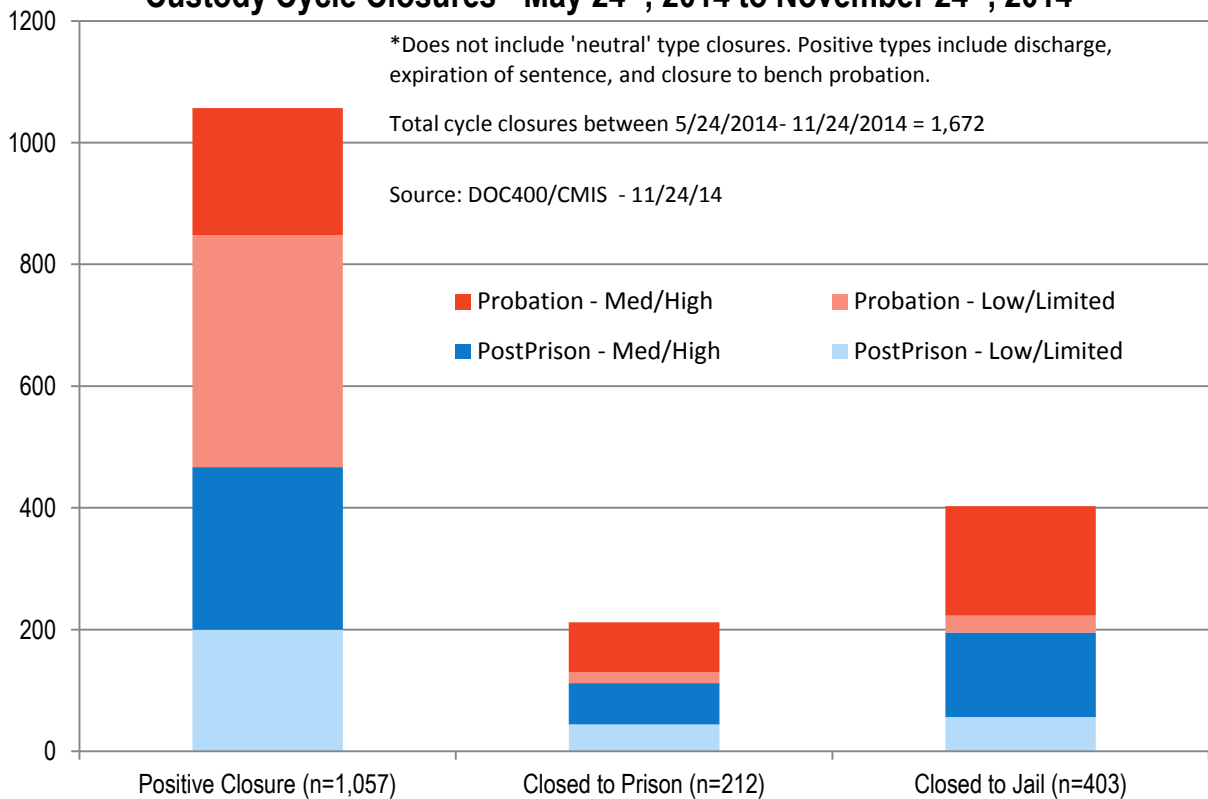
Contact Lauren Brown with questions or concerns lauren.brown@multco.us
 Current and past editions of this report are available at www.lpscc.org



Adult Community Supervision*



Custody Cycle Closures - May 24th, 2014 to November 24th, 2014*



Contact Lauren Brown with questions or concerns lauren.brown@multco.us
 Current and past editions of this report are available at www.lpscc.org

