



Local Public Safety Coordinating Council of Multnomah County

Public Safety Trends Summary

The Public Safety Trends document provides an executive level summary of operational data for many of the decision points and agencies in Multnomah County's public safety system. The statistics in the Report are compiled from the Decision Support System – Justice (DSSJ) data warehouse.

November 2014

Dear Reader,

Welcome to the Public Safety Trends Summary Report produced by Multnomah County's Local Public Safety Coordinating Council (LPSCC). The purpose of this report is to provide an executive level summary of operational data for many of the decision points in the County's Public Safety System for the Council's Executive Committee, partner agency staff, and members of the public.

The statistics detailed in this report are sourced from the County's Decision Support System – Justice data warehouse (DSSJ). The data contained in DSSJ is sourced from the host agency systems and is regularly audited for accuracy. Additionally, the data presented in this report is regularly reviewed by the owner agency analysts for consistency and clarity.

The Report provides both long-term trend data and short-term descriptive statistics. The long-term trends section provides a description of how certain types of events, case types, and charge levels have changed over time. The short-term trends section provides a more detailed description of the data presented in the long-term trend section. Measures of reported Incidents, Arrest, Disposition, and Sentencing are reported at the case unit level. Measures for Booking and Custody are reported at the person level.

The Public Safety Trends Report is produced on a regular basis and serves as a starting point for broader investigations of trends in local public safety. Frequently, the Report will contain a special analysis section providing a systems perspective of specific areas in the local public safety system.

Lauren Brown
LPSCC Analyst

Items of Note and Updates

Average daily reported offenses decreased in November 2014. However, as of November 30th, year to date average daily reported offenses remain higher than 2013 due to sharp increases in reported thefts from auto.

A decreasing trend continues in average daily arrests and average daily bookings over the last three months. Average daily standard bookings were at the lowest level since May 2009 and average daily jail bed use was at 86% capacity.

Decreasing trends have also been seen in misdemeanor cases reviewed and issued by prosecution during 2014. Fewer issued misdemeanor cases has resulted in decreases in disposed misdemeanor cases.

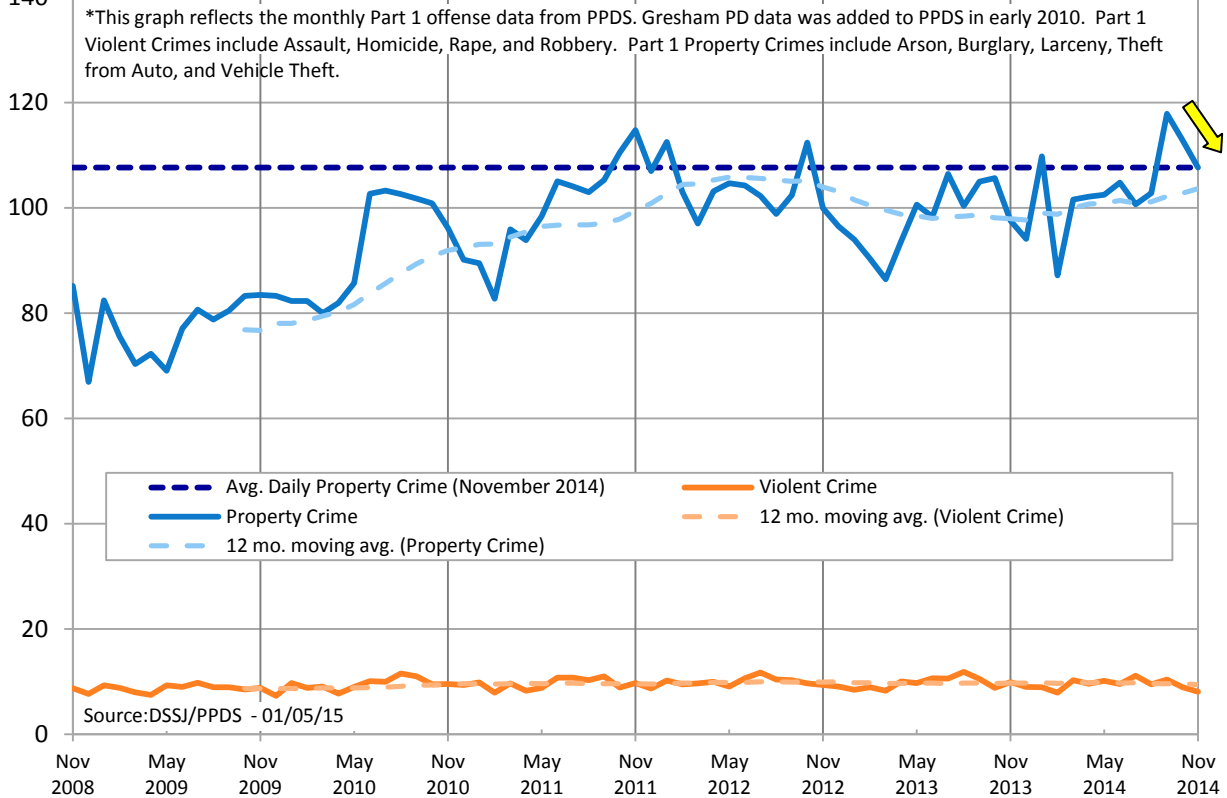
The process of integrating data from the Multnomah County Circuit Court's new Odyssey (eCourt) system into DSSJ is ongoing. A few regularly published charts created using Court data are not included in this report due to the transition.



Contact Lauren Brown with questions or concerns lauren.brown@multco.us
Current and past editions of this report are available at www.lpccc.org



Average Daily Reported Part 1 Offenses*



There was one reported homicide in November 2014. After peaking in September 2014, reported Part 1 Crime has seen a decreasing trend in recent months. However, when compared to November of the prior year (2013), average daily reported incidents were higher in November 2014. Year to date total average daily reported offenses were also up in 2014 when compared to 2013, despite the recent decreases. Increases in reported thefts from auto are driving the 2014 increases in average daily reported offenses.

Average Daily Reported Part 1 Offense by Type	November 2014	October 2014	November 2013	YTD 2014	YTD 2013
Part 1 Violent Crime	8.1	9.0	9.9	9.5	9.8
Homicide	0.03	0.19	0.07	0.08	0.07
Rape	0.9	0.5	0.8	0.8	0.8
Robbery	2.4	2.4	3.2	2.8	3.1
Assault	4.8	5.8	5.9	5.9	5.8
Part 1 Property Crime	↓107.6	112.8	97.5	↑104.6	98.1
Burglary	14.3	13.4	13.6	13.7	13.3
<i>Residential</i>	8.3	8.1	8.4	7.7	7.9
<i>Other</i>	6.1	5.3	5.2	6.0	5.5
Larceny	↓79.3	86.5	71.6	↑79.2	73.2
<i>Shoplifting</i>	13.2	13.8	15.7	14.4	14.3
<i>Theft from Auto</i>	38.5	39.0	27.8	↑33.1	26.5
<i>Other</i>	27.6	33.7	28.1	31.7	32.3
Motor Vehicle Theft	13.7	12.5	11.7	11.3	11.0
Arson	0.3	0.4	0.6	0.5	0.6
Total Reported Part 1 Crime	↓115.7	121.8	107.4	↑114.1	107.9

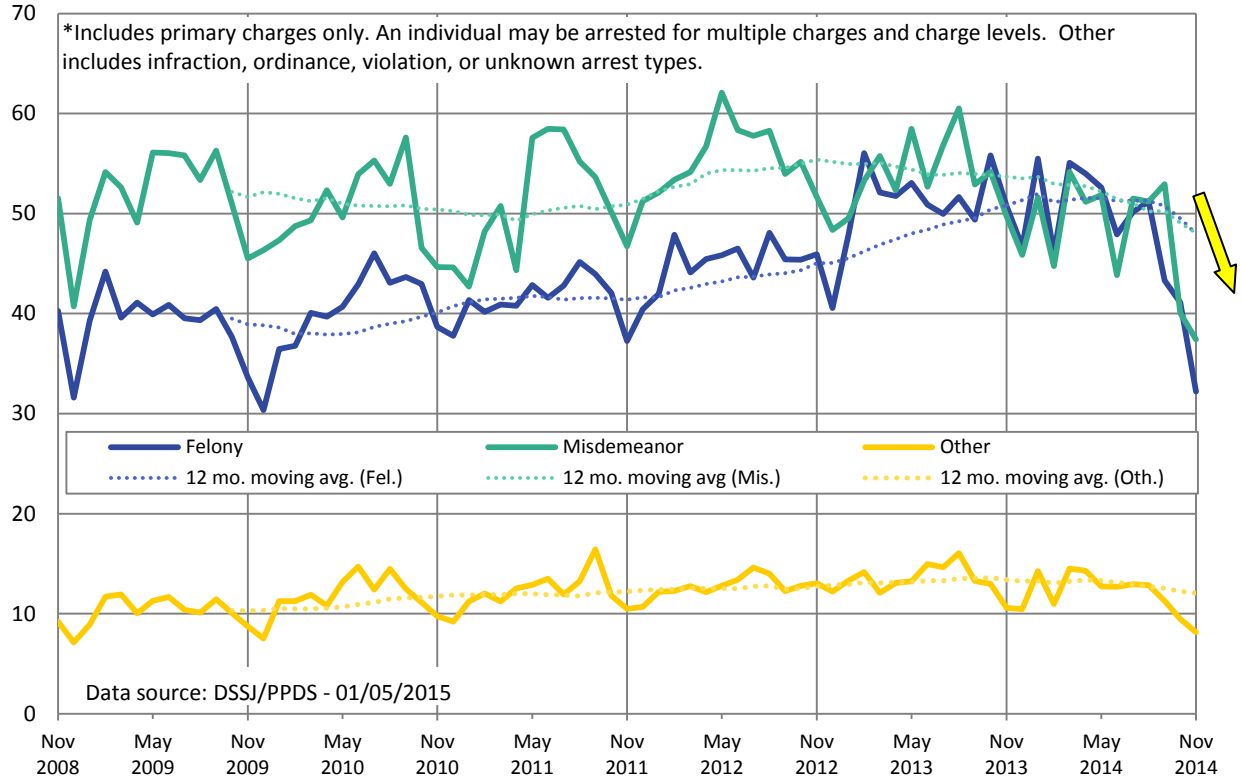
**Reported incident data was pulled on 01/05/15. Due to records entry lag, the counts for the current month may be lower than the true total. Year to date (YTD) data is as of November 30th.*



Contact Lauren Brown with questions or concerns lauren.brown@multco.us
 Current and past editions of this report are available at www.lpscc.org



Average Daily Arrests by Charge Level*



A sharp decreasing trend in average daily arrests has been noted over the prior three months. The decreasing trend is also present in standard jail bookings. The decrease may be slightly overinflated by records entry lag that is occurring as Multnomah County law enforcement agencies begin the process of transitioning to a new records system.

Average Daily Arrests by Charge Level and Type	November 2014	October 2014	November 2013	YTD 2014	YTD 2013
Felony	↓32.2	41.1	50.8	↓48.2	51.7
Alcohol & Drugs	5.7	8.9	11.2	9.9	12.1
Behavioral	0.6	0.7	1.1	0.8	1.1
Other Charge	0.1	0.5	0.1	0.2	0.2
Fugitive Hold (Warrants)	21.4	24.6	31.7	30.2	30.3
Person (includes DUII)	0.9	1.2	1.6	1.5	1.7
Property	3.4	5.1	5.0	5.5	6.3
Vehicle	0.1	0.1	0.1	0.0	0.1
Misdemeanor	↓37.4	40.0	49.7	↓48.3	54.2
Alcohol & Drugs	0.0	0.1	0.3	0.0	0.1
Behavioral	4.5	6.1	7.8	7.5	8.8
Local	5.0	5.8	6.1	7.4	9.3
Other Charge	1.7	1.1	1.4	1.4	1.4
Person (includes DUII)	10.4	11.2	14.8	12.8	14.4
Property	15.3	15.2	18.4	18.4	19.4
Vehicle	0.6	0.5	0.9	0.7	0.8
Other Charge Levels	8.1	9.5	10.6	12.2	13.5
Total Arrests	↓77.8	90.6	111.0	↓108.7	119.4

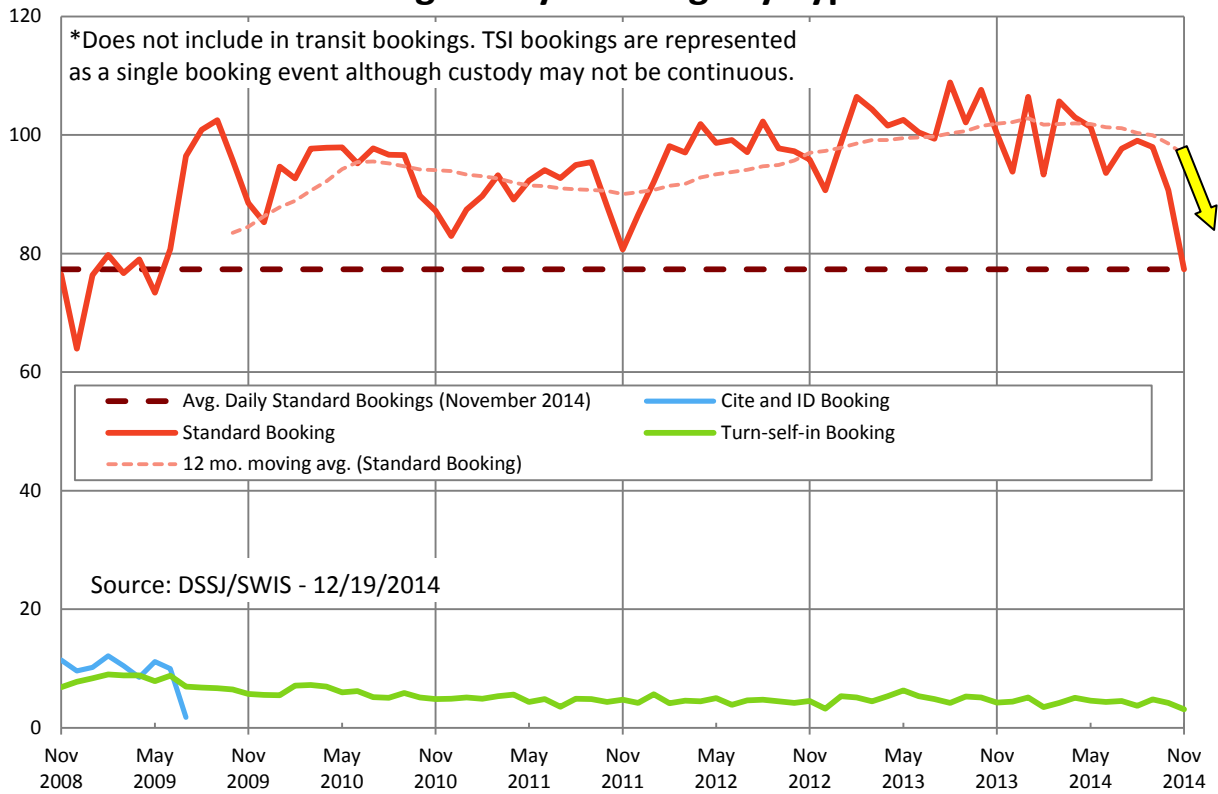
***Arrest data was pulled on 01/05/15. Due to records entry lag, the counts for the current month may be lower than the true total. Year to date (YTD) data is as of November 30th.**



Contact Lauren Brown with questions or concerns lauren.brown@multco.us
 Current and past editions of this report are available at www.lpscc.org



Average Daily Bookings by Type*



A decreasing trend has been seen in average daily bookings over the prior three months. There were approximately twenty-two fewer bookings on average per day in November 2014 when compared to August 2014. Average daily standard bookings were at the lowest level since May 2009. Year to date, average daily bookings were down in 2014 when compared to 2013.

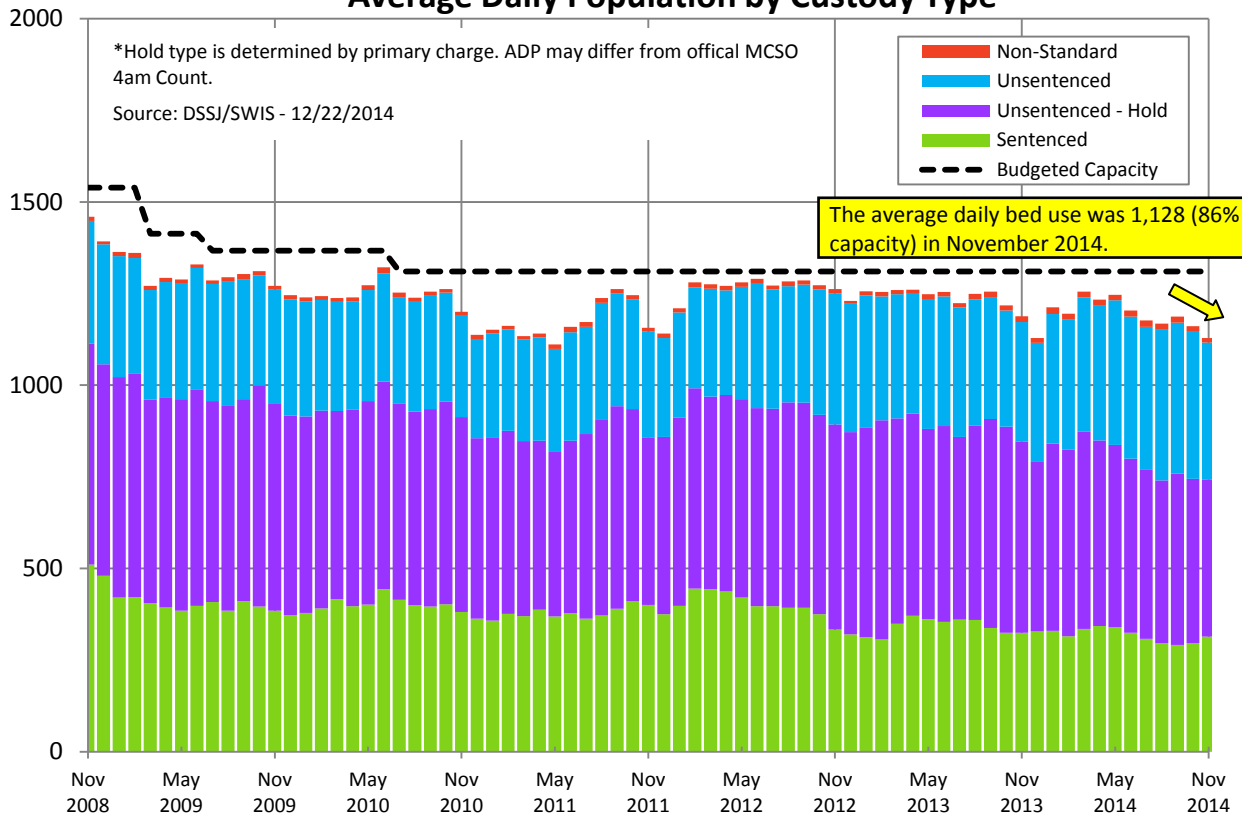
Average Daily Bookings by Charge Level and Type	November 2014	October 2014	November 2013	YTD 2014	YTD 2013
Felony	16.2	22.6	22.5	22.9	23.4
<i>Alcohol & Drugs</i>	6.5	7.9	10.5	9.2	9.9
<i>Behavioral</i>	0.7	1.7	1.5	1.5	1.5
<i>Other Charge</i>	0.2	1.0	1.1	0.9	1.0
<i>Person (includes DUII)</i>	3.2	4.1	3.3	3.9	3.9
<i>Property</i>	5.2	7.6	5.9	6.9	6.7
<i>Vehicle</i>	0.4	0.4	0.3	0.4	0.3
Misdemeanor	35.9	37.8	47.6	42.9	47.1
<i>Alcohol & Drugs</i>	0.1	0.3	0.9	0.4	0.6
<i>Behavioral</i>	7.1	8.4	9.6	9.3	10.6
<i>Local</i>	0.5	0.8	1.7	1.0	2.0
<i>Other Charge</i>	1.9	2.3	2.6	2.3	2.2
<i>Person (includes DUII)</i>	12.1	11.3	14.9	13.1	14.2
<i>Property</i>	12.5	13.2	15.8	14.8	15.4
<i>Vehicle</i>	1.7	1.6	2.2	2.0	2.1
Other Charge Levels	0.4	0.6	0.5	0.6	0.5
Probation Violations	10.5	12.5	10.4	12.1	11.2
Holds	14.3	17.2	19.3	18.5	20.6
Total Standard Bookings	↓77.3	90.7	100.3	↓97.0	102.9



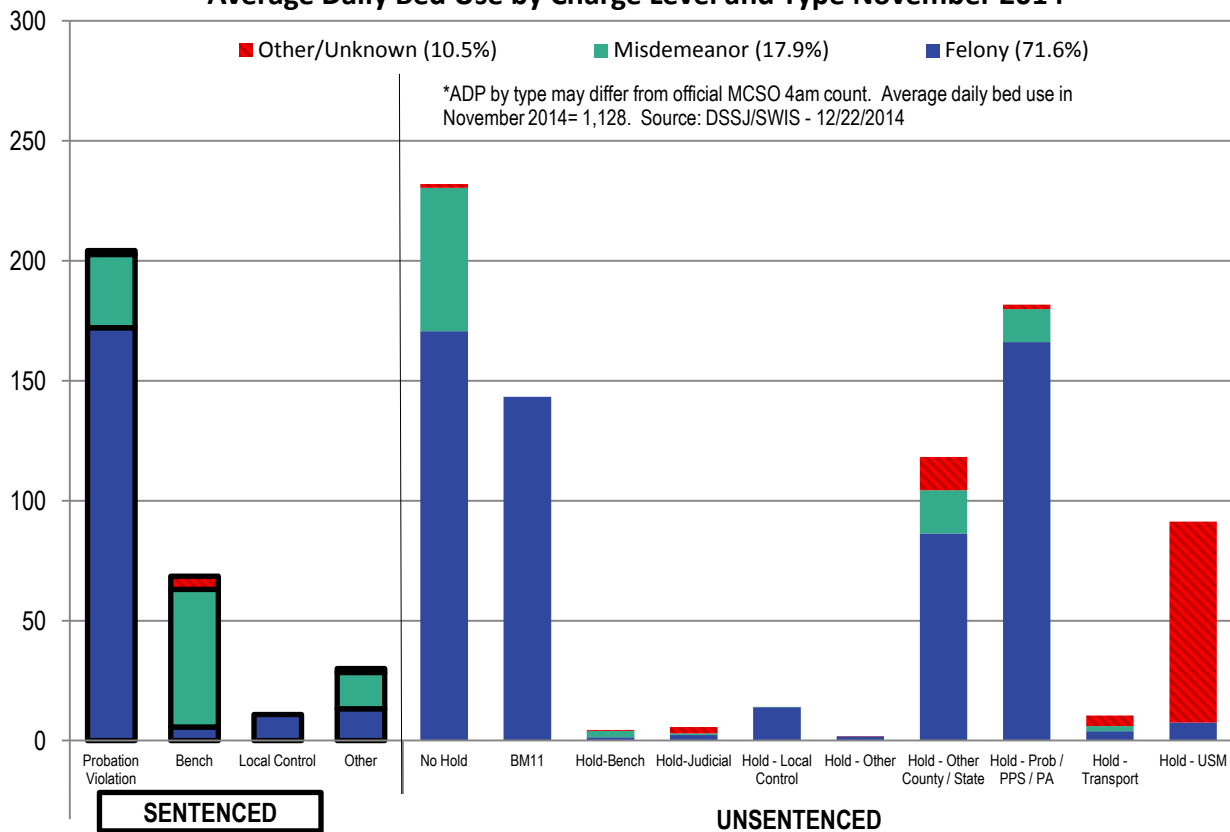
Contact Lauren Brown with questions or concerns lauren.brown@multco.us
 Current and past editions of this report are available at www.lpscc.org



Average Daily Population by Custody Type*



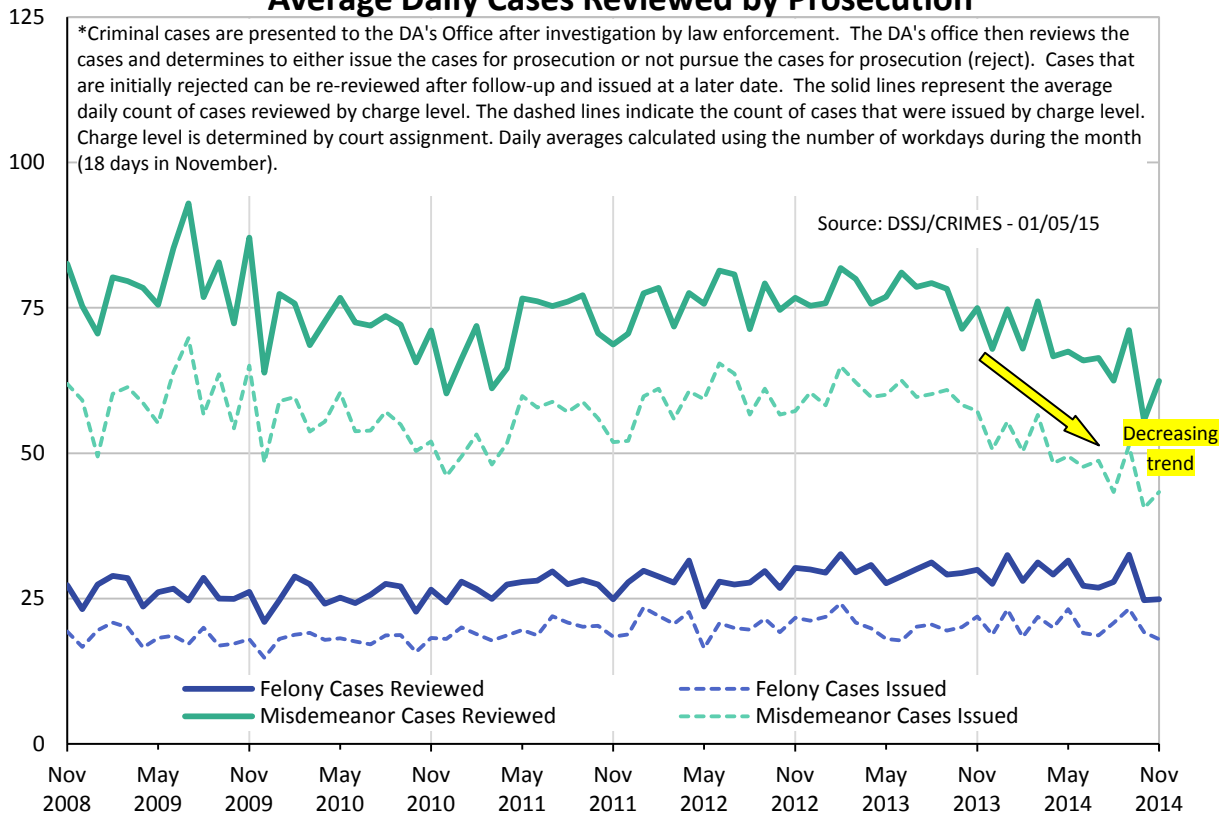
Average Daily Bed Use by Charge Level and Type November 2014*



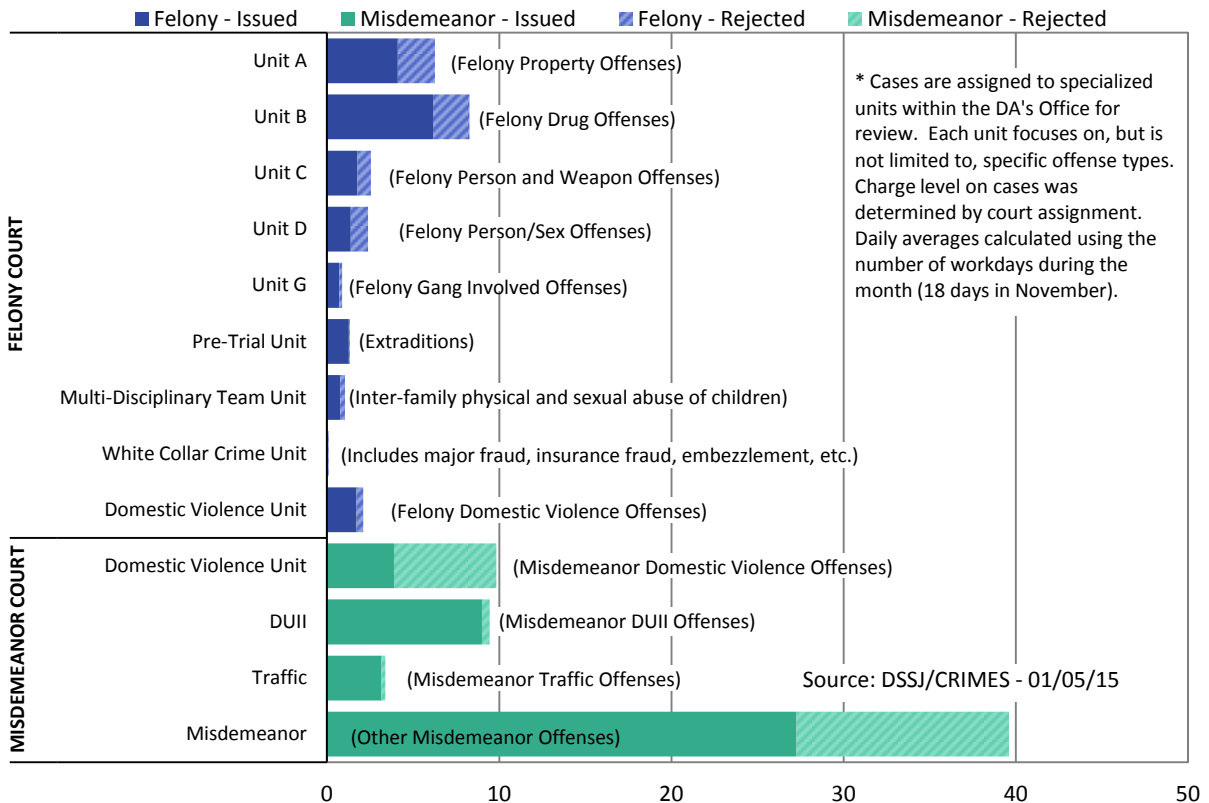
Contact Lauren Brown with questions or concerns lauren.brown@multco.us
Current and past editions of this report are available at www.lpscc.org



Average Daily Cases Reviewed by Prosecution



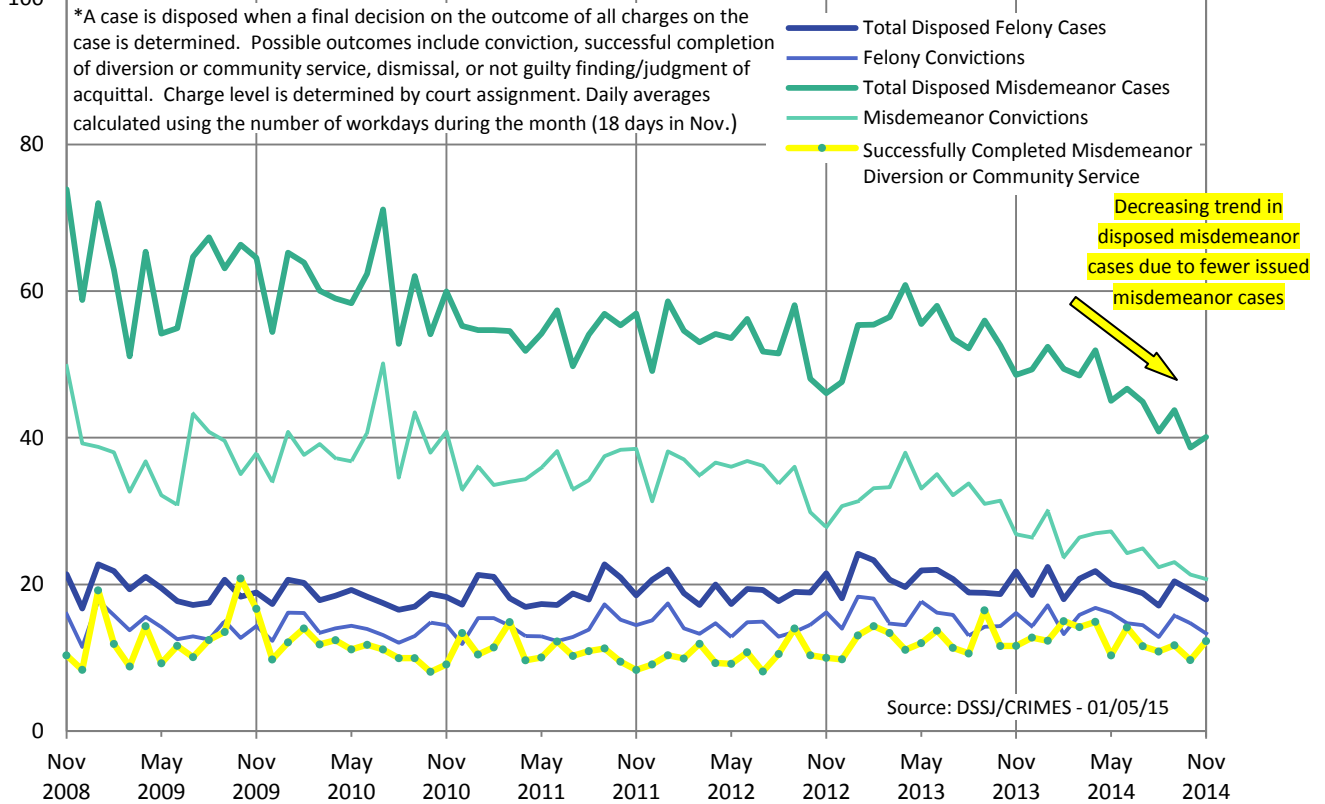
Average Daily Case Review Outcome by DA Unit - November 2014



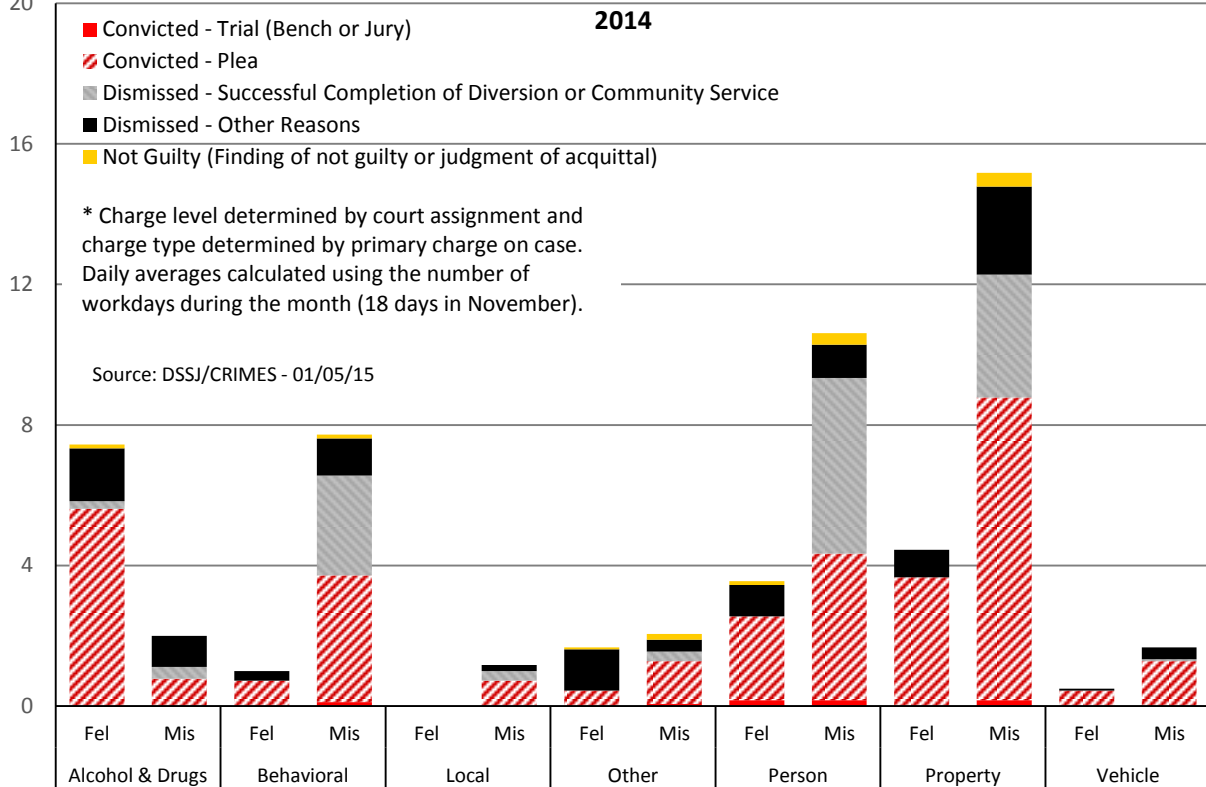
Contact Lauren Brown with questions or concerns lauren.brown@multco.us
 Current and past editions of this report are available at www.lpscc.org



Average Daily Disposed Prosecution Cases by Charge Level*



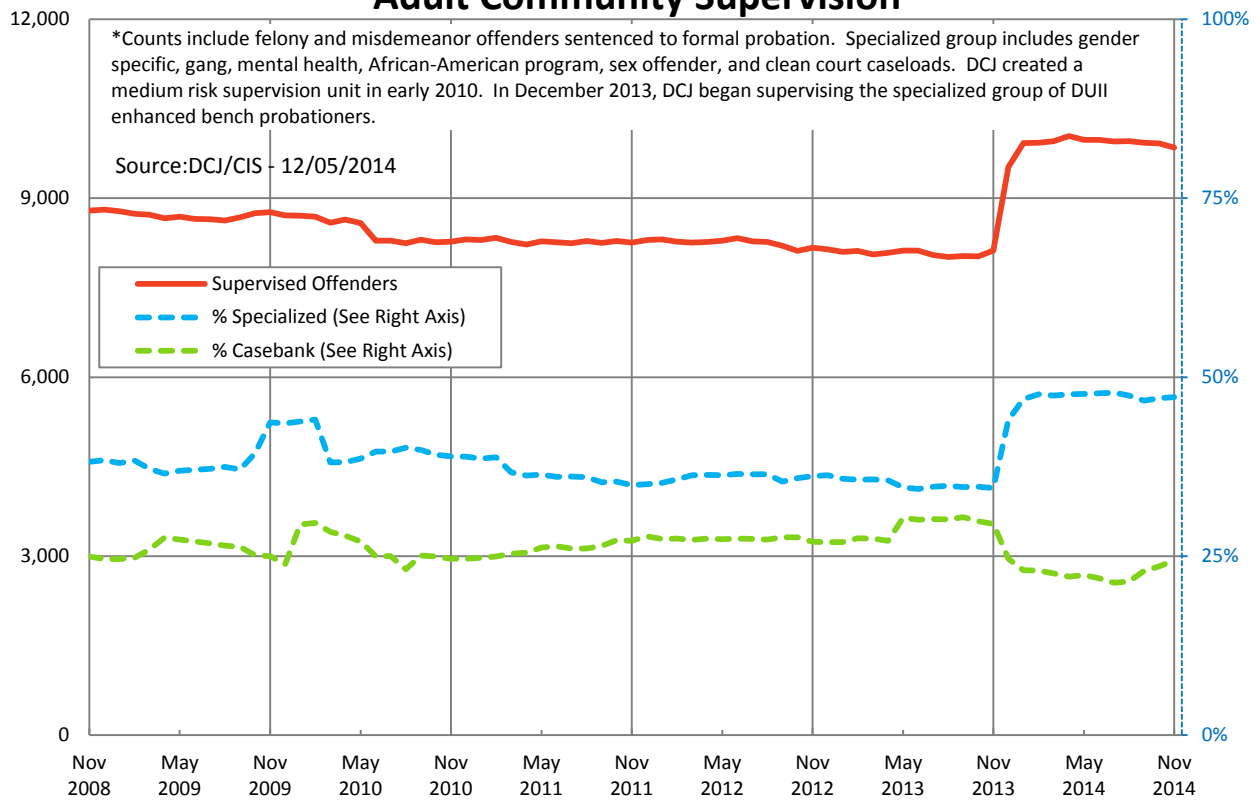
Average Daily Prosecution Case Disposition by Charge Level and Type November 2014



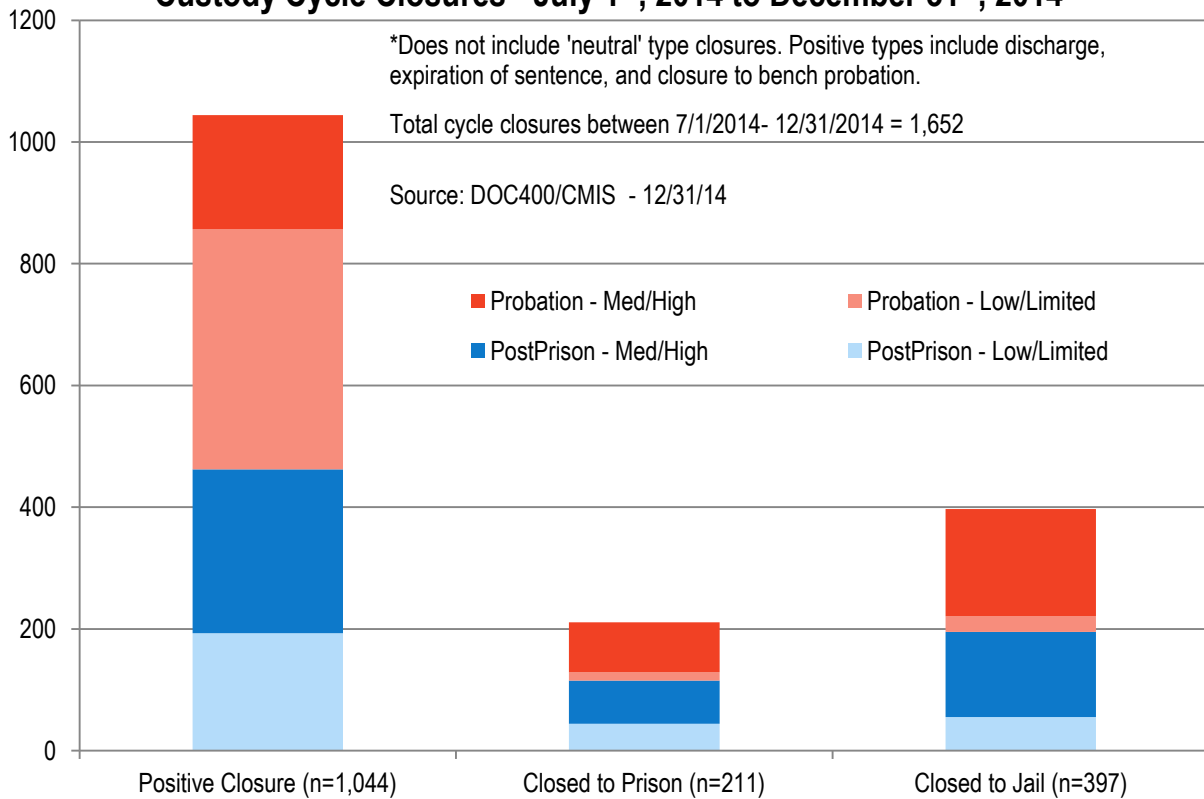
Contact Lauren Brown with questions or concerns lauren.brown@multco.us
 Current and past editions of this report are available at www.lpscc.org



Adult Community Supervision*



Custody Cycle Closures - July 1st, 2014 to December 31st, 2014*



Contact Lauren Brown with questions or concerns lauren.brown@multco.us
 Current and past editions of this report are available at www.lpscc.org

