



# MULTNOMAH COUNTY

## TRANSIT PROGRAMS

**EMCTC**  
**December 14, 2020**

## New Transit Service in Multnomah County

House Bill 2107, “Keep Oregon Moving,” created the State Transportation Improvement Fund (STIF), which includes funds for transit service in urban and rural parts of Multnomah County and other Oregon counties.

Multnomah County has been working on several new programs, for both urban and rural shuttles.



## **Job Connector Shuttles**

**Serve areas where fixed route transit, such as TriMet bus routes do not work well, due to service hours or passenger numbers that don't warrant regular bus service.**

- **Troutdale Industrial Park = TRIP**
- **Swan Island**
- **Alderwood-Cornfoot-Columbia (aka Airport area)**



## Job Connector Shuttle

### Troutdale Industrial Park, aka TRIP

<https://multco.us/transit-services/troutdale-job-connect-shuttle>

- **Currently in operation on Saturday and Sunday only, mornings and afternoons**
- **This free service mimics TriMet line 81; which operates all other days of the week.**
- **Due to limited COVID limiting capacity on the shuttle, Amazon is running a supplemental service at the same time.**



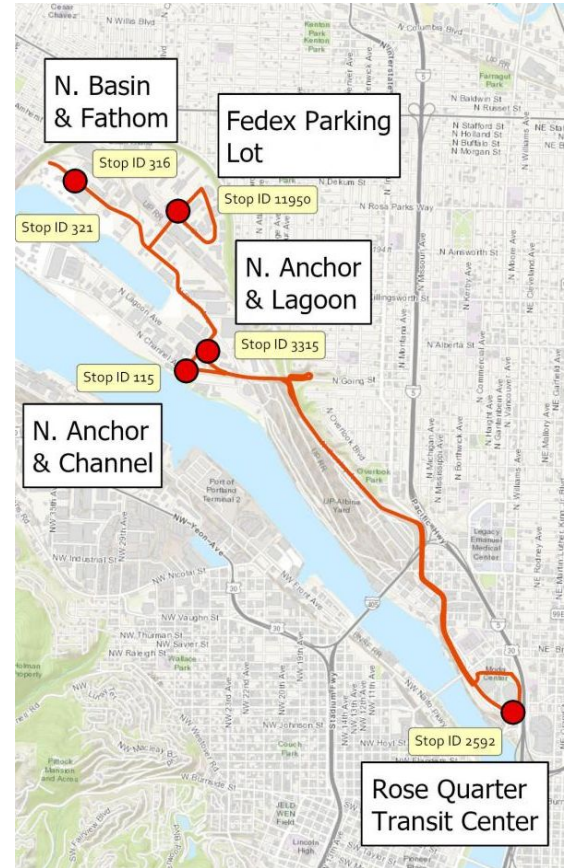
## Swan Island Jobs Connector

<https://multco.us/transit-services/swan-island-job-connect-shuttle>

Route between the Rose Quarter and FedEx on Swan Island.

This service runs on **TriMet's Line 85**

This free service operates evenings, Monday to Friday, from 6:30 pm to 12:30 am.



## **“Airport” Area Jobs Connector Shuttle**

Aka Alderwood-Cornfoot-Columbia (ACC)

**A new service that is in the planning stages, with collaboration between the County, PBOT, and the Port of Portland.**

**It will not go to the airport, but will use the Parkrose Transit Center as a hub.**

**To serve the employers south of the airport and dipping into the Cully neighborhood. An employer survey is going out this week, with three route suggestions.**



## Rural Transit, Dial-a-Ride

The program serves all Multnomah county residents living in or traveling to rural areas of the county, outside the TriMet service area. All rides must begin and end within Multnomah County.

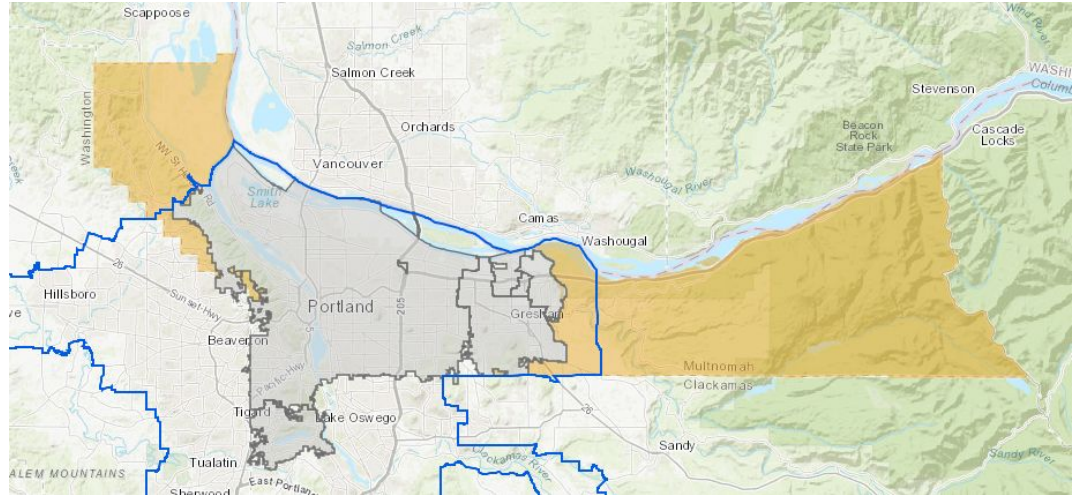
Rides will be provided to and from either your destination or a transit hub, whichever is closer.

The two transit hubs are:

**Gresham Transit Center**

**SW 5th and Madison, downtown**

**Mon- Friday 8am to 4:30pm**



**The service is open to all. Priority may be given to older adults, people with disabilities, and those without access to a vehicle.**



# Summary

## Transit services

- **3 Urban Routes - Job Connectors**
  - **Troutdale Industrial area - currently in operation, provided by EcoShuttle**
  - **Swan Island - currently in operation, provide by EcoShuttle**
  - **Airport industrial area - currently in planning**
- **Rural Services -on-demand services are provided by Ride Connection**





## Questions?

