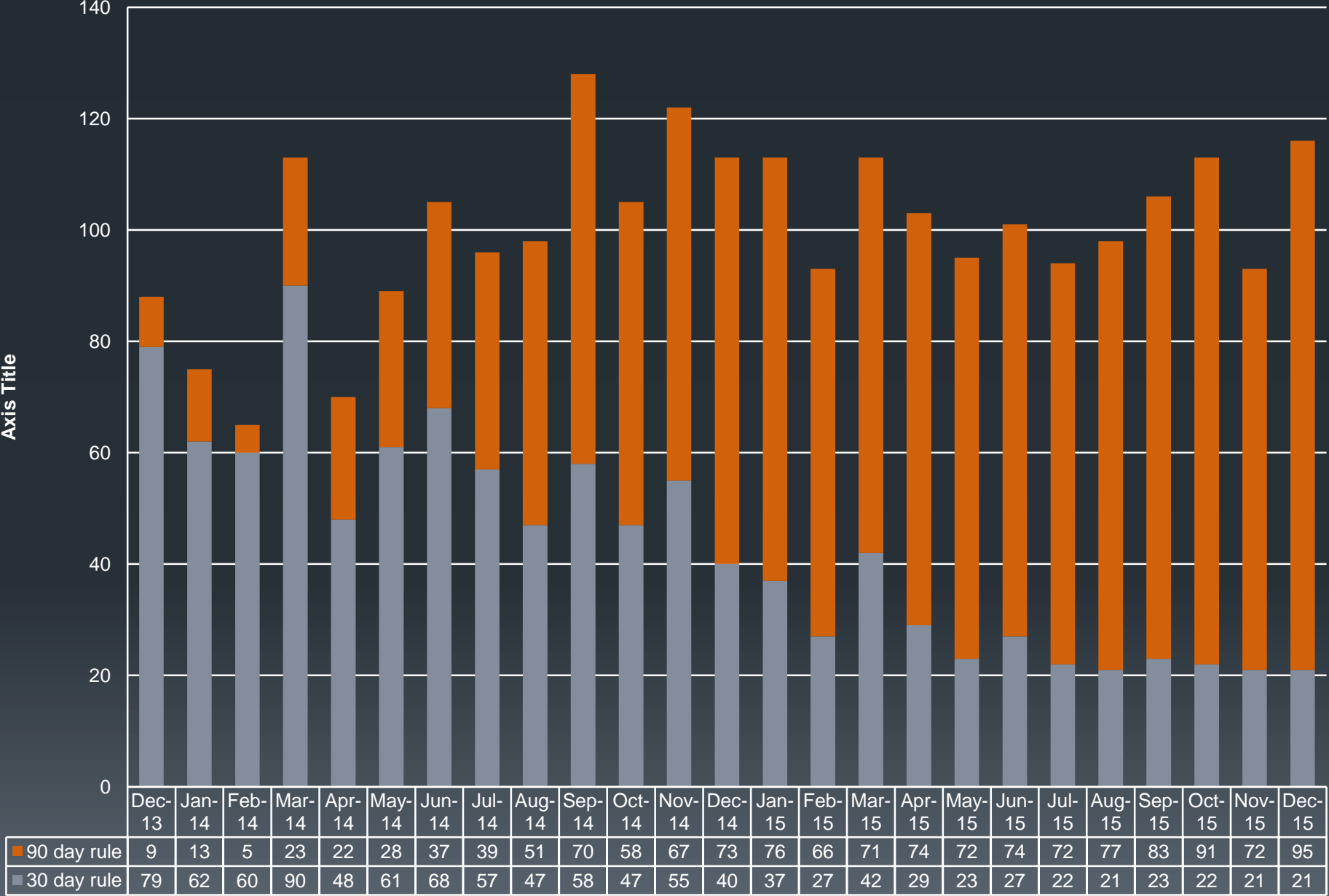


Oregon Department of Corrections  
Budget Update and  
Short-Term Transitional Leave

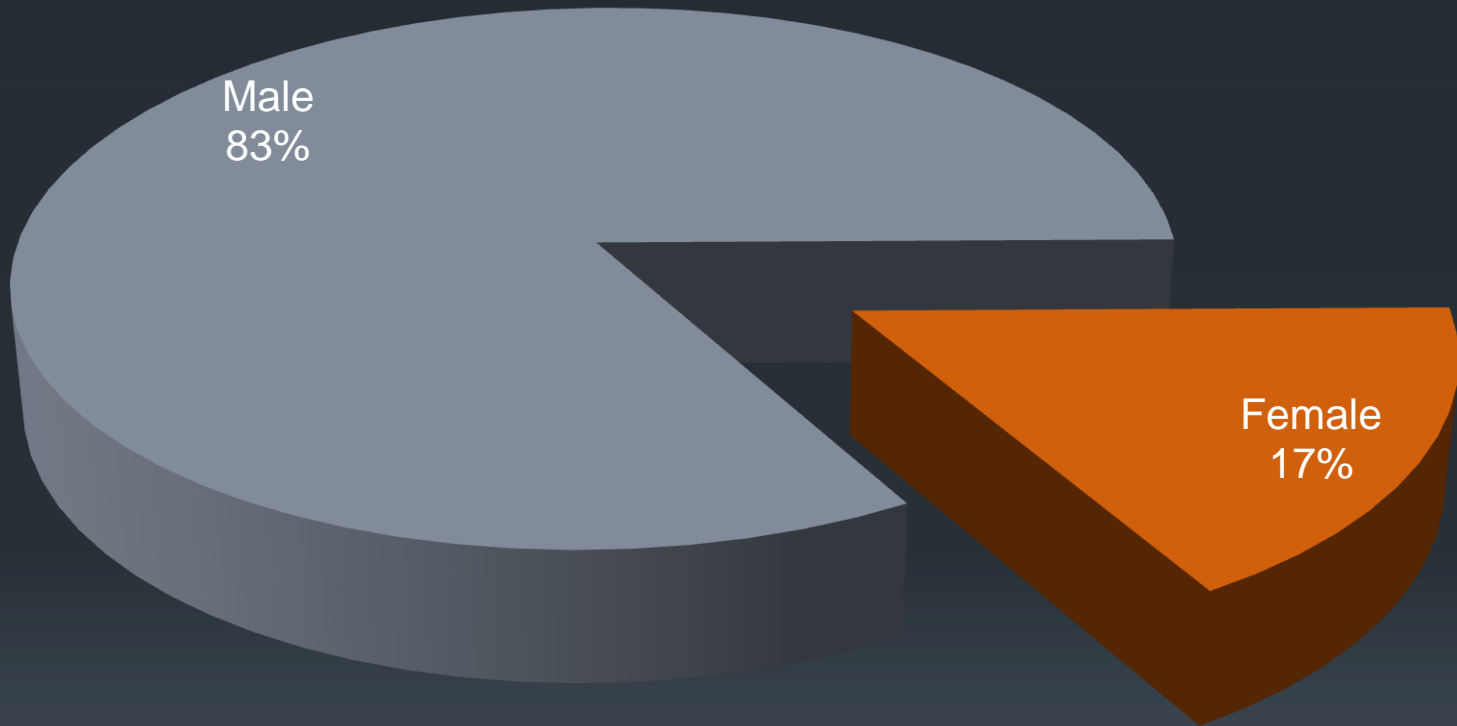
# Agency and Budget Update

- Biennial Budget of \$1.6 Billion
- 4500 Employees
- 14 Institutions
- 2 Community Corrections Counties (Linn and Douglas)
  
- Transition of Deer Ridge Inmates: 2/24/16
- Inmate population under October 2015 Forecast (-78)
- Inmate population over April 2015 Forecast (+71)
  - \$15 Million shortfall
  - No new operating funds – budget rebalance 2017 Session
  - Fully funded Community Corrections Budget

# STTL Releases Under 30 Rule vs. 90 Rule



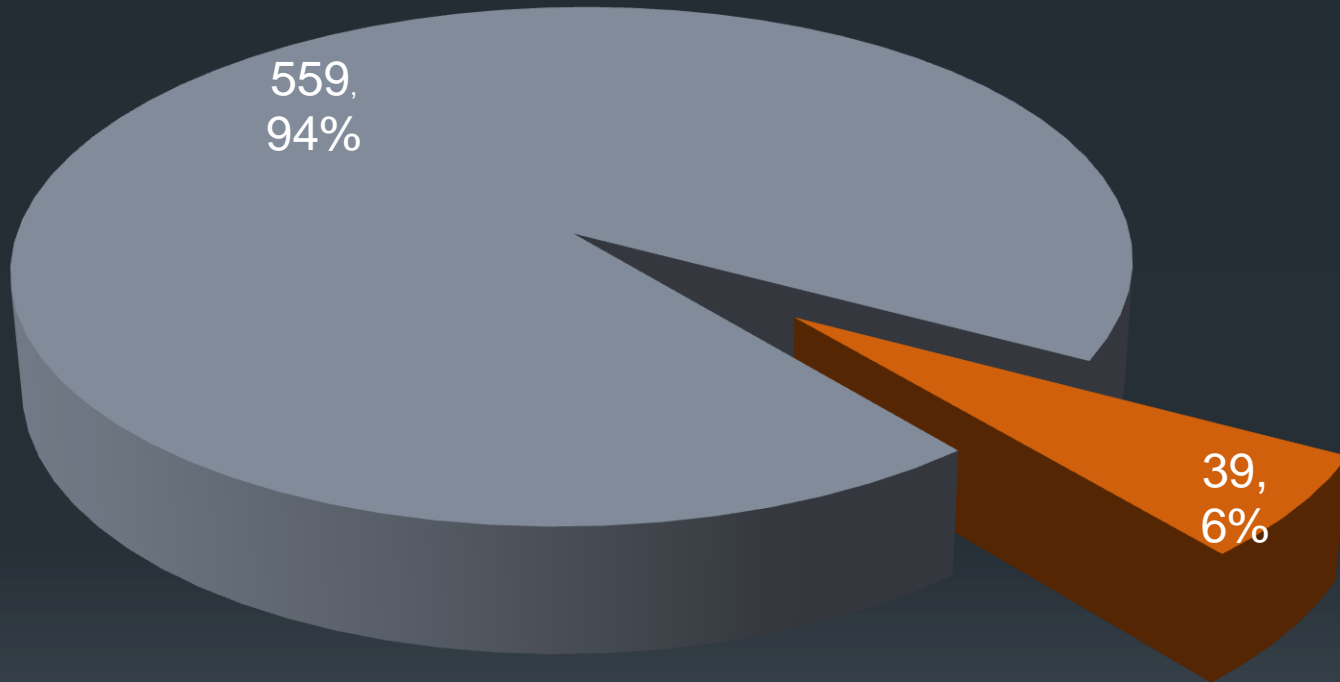
# STTL Releases by Gender 12/2013 through 12/2015



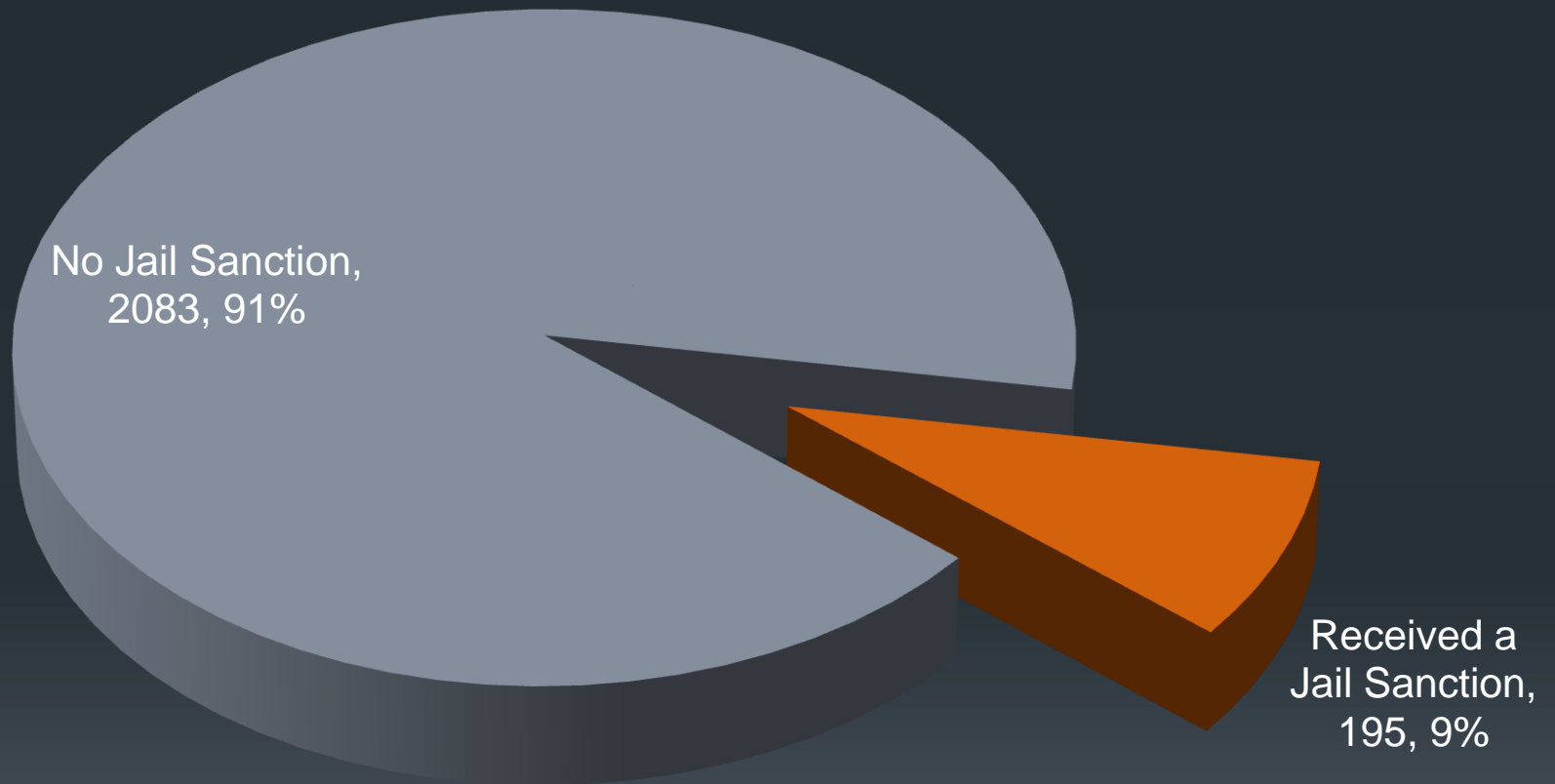
# STTL Sucessful Completions 12/2013 through 12/2015



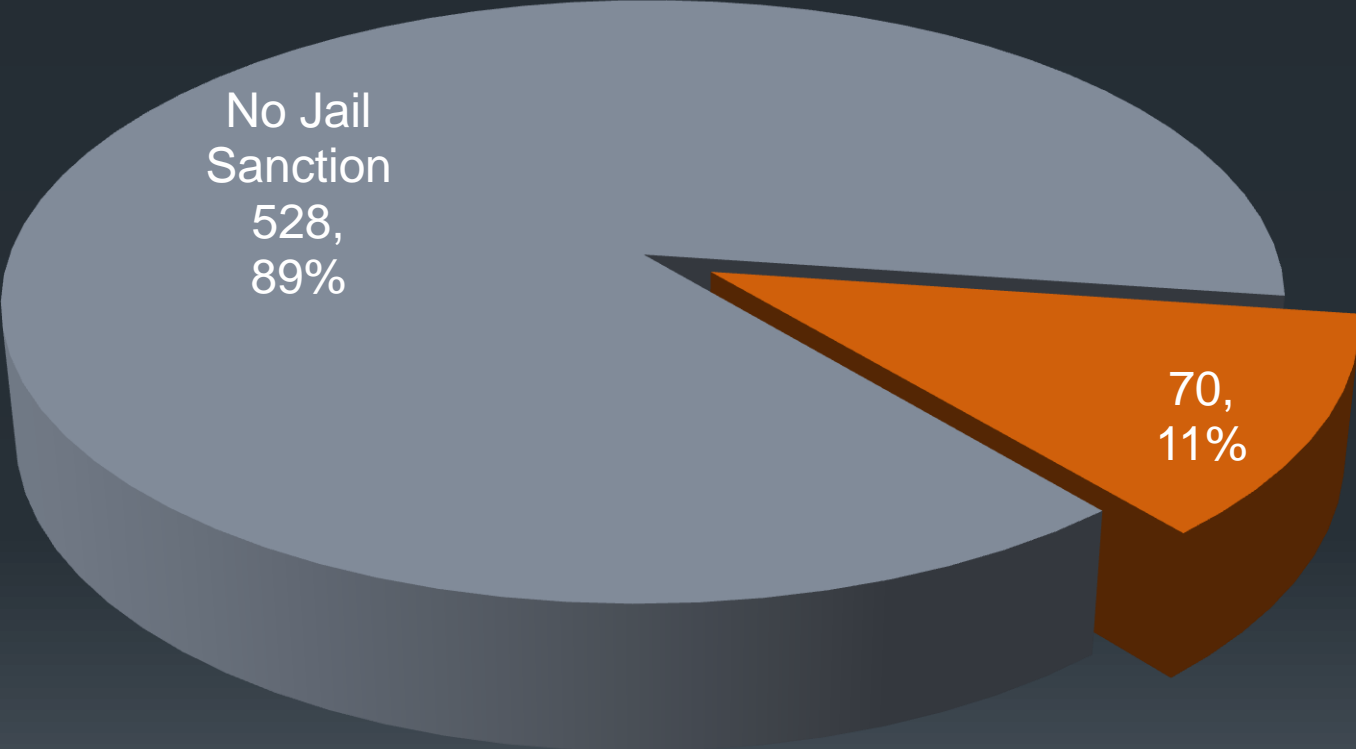
## Mult Co Successful Completions



# STTL Releases Receiving a Jail Sanction 3/2014 through 12/2015



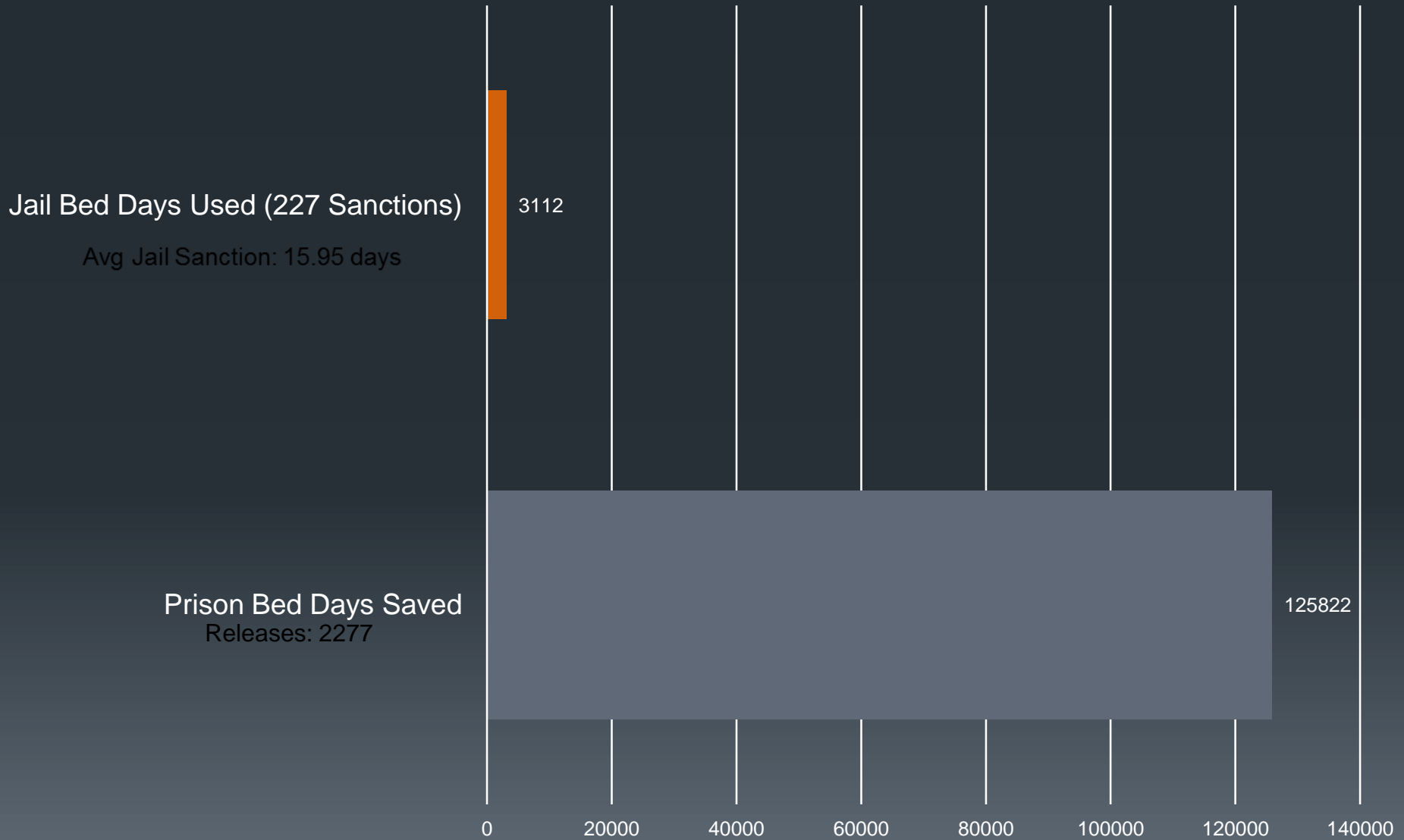
# Mult Co Jail Sanctions





# STTL Prison Bed Days Saved vs. Jail Bed Days Used

## 3/2014 through 12/2015



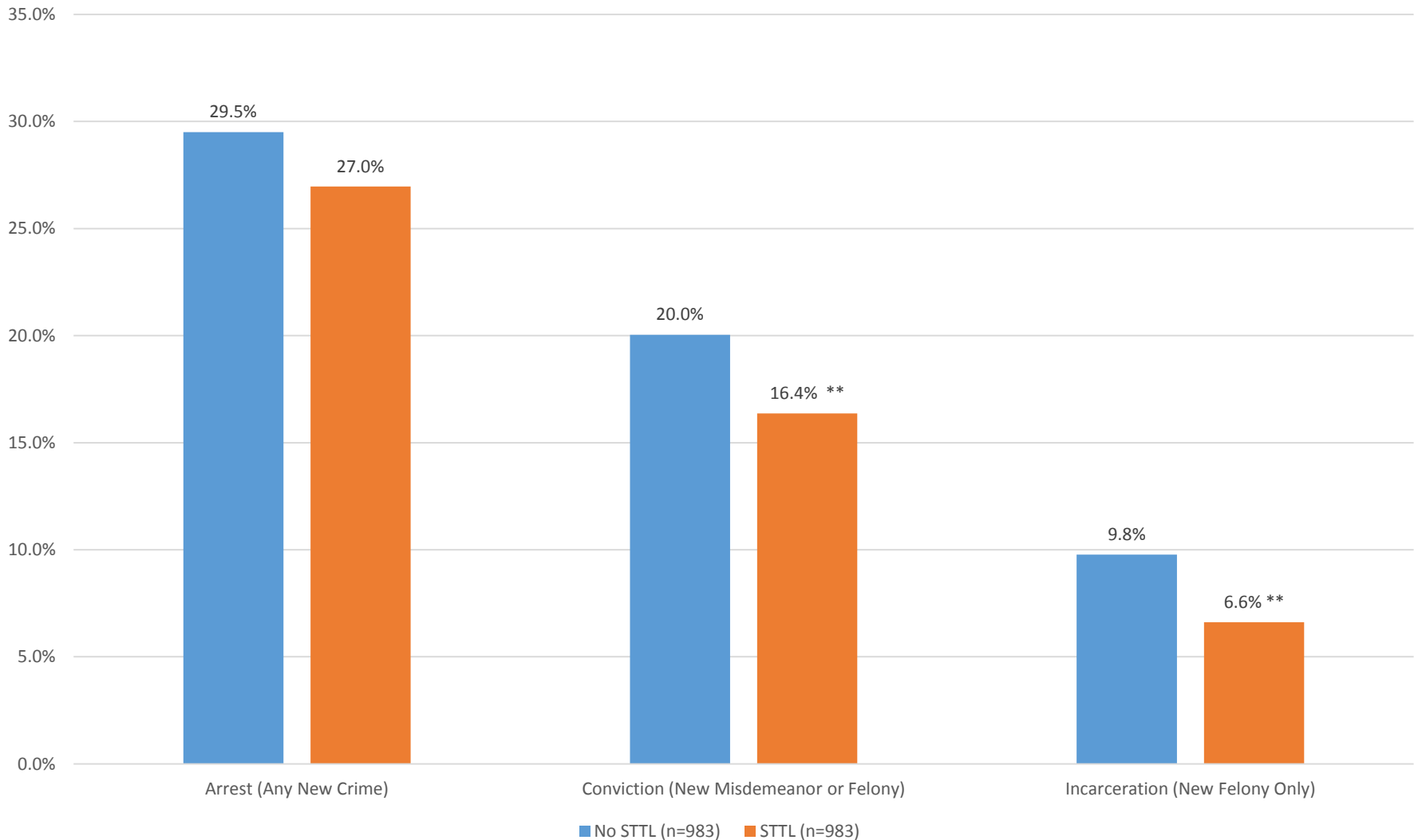
# STTL Recidivism Analysis

Preliminary Results

# STTL and No STTL Releases December 2013 to October 2014

## Matched Groups

### 1 Year Recidivism Rates



\* marginal significance ( $p < 0.10$ )

\*\* statistical significance ( $p < 0.05$ )