
**Multnomah County Bicycle and Pedestrian
Citizen Advisory Committee**

**West Hawthorne Bridge:
Courthouse and Naito
Project Statuses**

04/08/2020

**Ae-young Lee, Engineer 2
Transportation Division, Bridge Section**



Agenda

- County Courthouse – phased work
 - Current layout
 - Upcoming changes
- PBOT Better Naito (I-405 to Jefferson)
 - Current schedule
- Comments and question throughout



Hawthorne Bridge - West approach



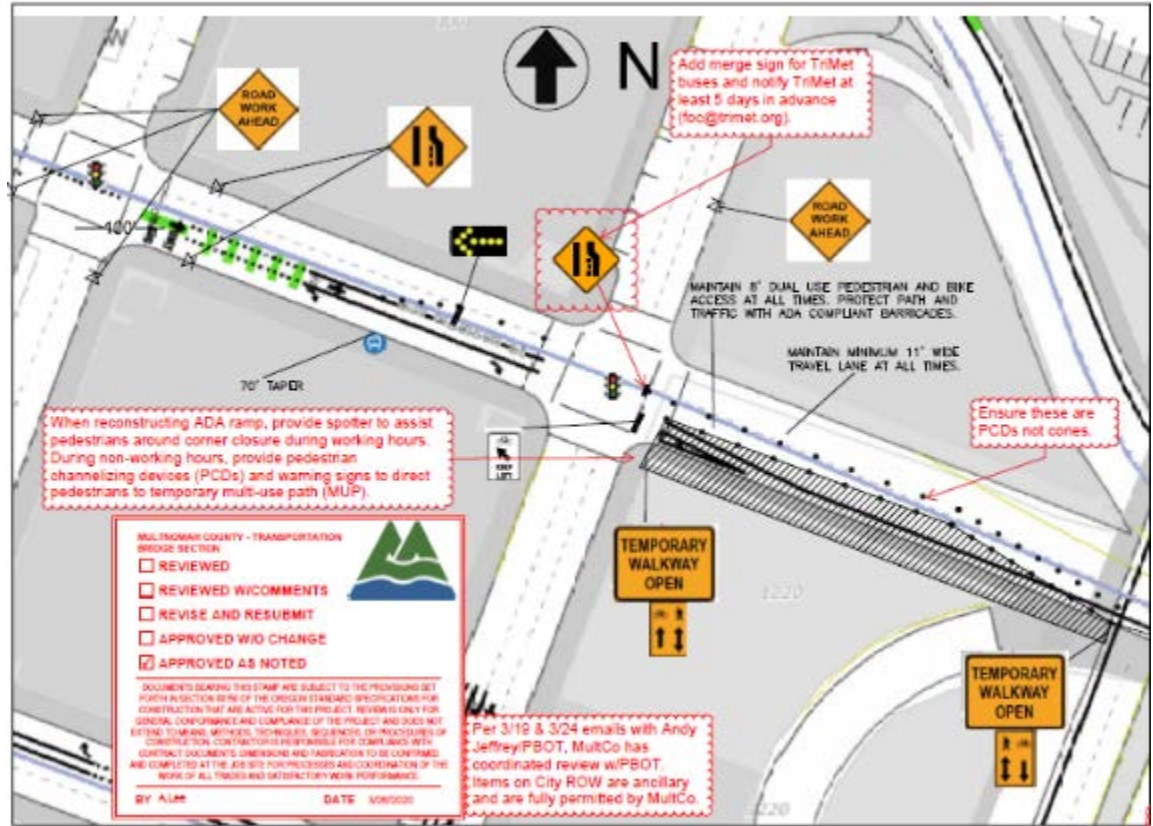
County Courthouse – current layout

- Protected walkway removal
- Striping shifted to prepare for next phase



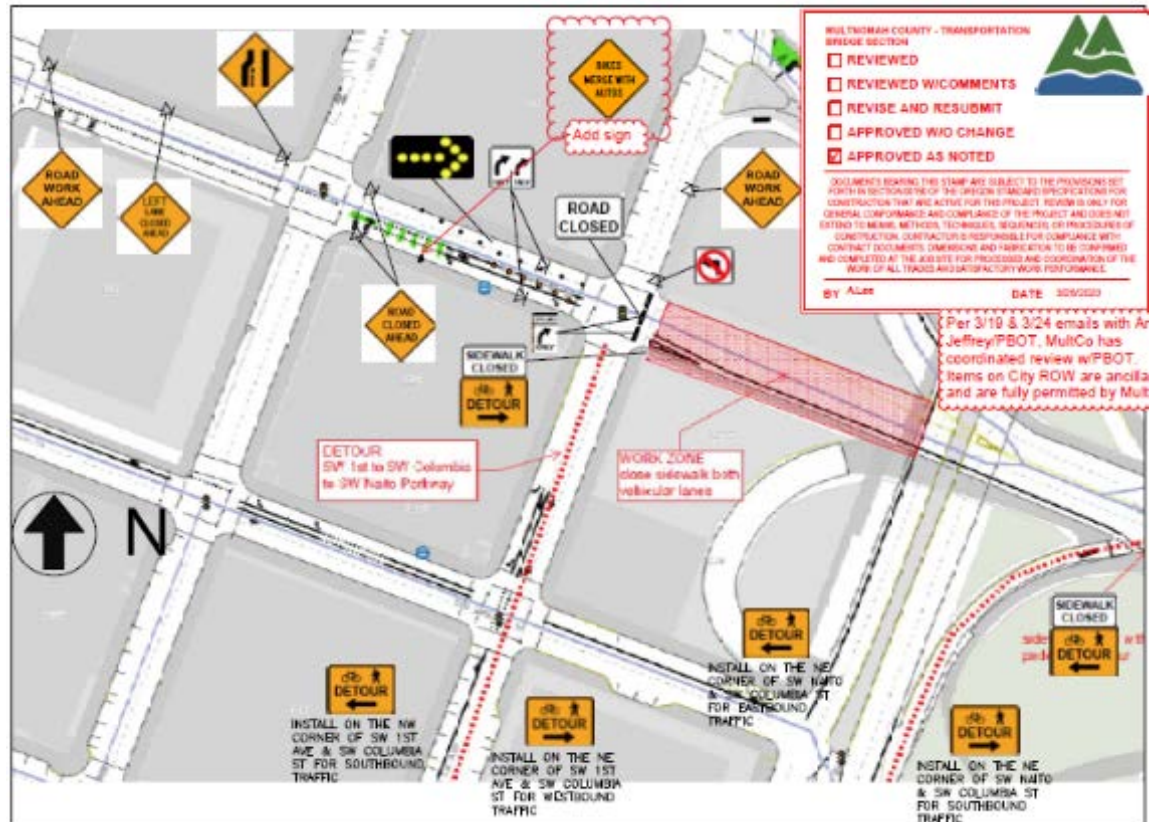
County Courthouse – concrete work

- Maintain 11' vehicle lane + 8' multi-use path
- Except some nights, see next slide
- Start ? through mid/late May



County Courthouse - paving

- Full closure of SW Madison St
- 3 days
- Start Fri 5/15 or 5/29



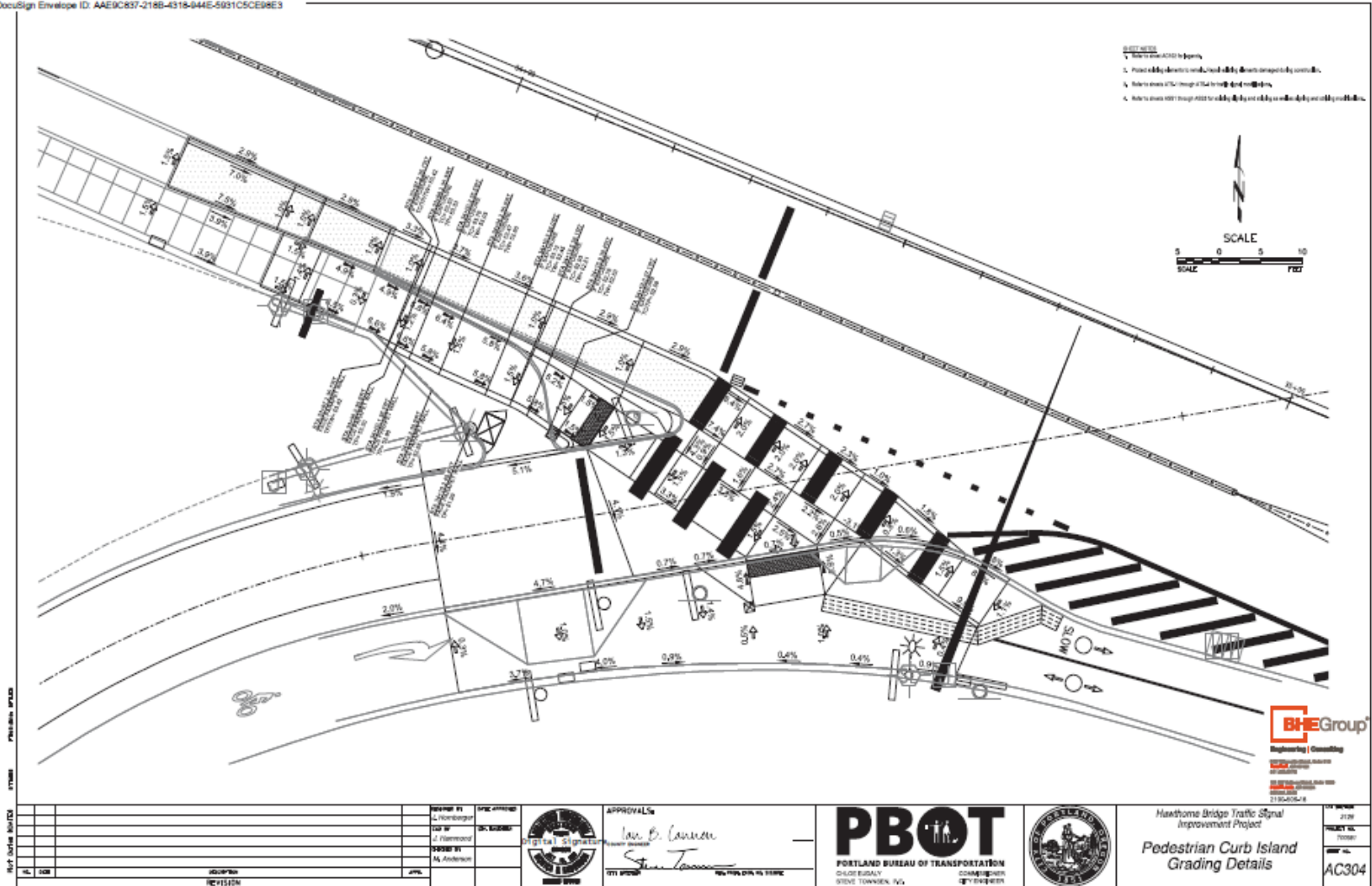
PBOT Better Naito

- Project aka “I-405 to Jefferson”, or “Phase 1” to differentiate from upcoming Better Naito Forever (which extends to NW Davis St)
- This presentation focuses on the changes to the Hawthorne Bridge only



PBOT Better Naito – Hawthorne signal

DocuSign Envelope ID: AA9C837-218B-4318-844E-5931C5CE98E3



PBOT Better Naito – Hawthorne signal

- Bid opening extended from 3/26 to 4/16
- Contractor to determine when Hawthorne Bridge work will be scheduled
- Project will keep 8' multi-use path on SW Madison St at all times with temporary ramps as needed to access sidewalk
- Project may close the Naito on-ramp sidewalk for up to 1 week

