

Multnomah County Willamette River Bridges Capital Improvement Plan



Project Summary Information: Roadway Improvements - East Approach							
Bridge Name(s):	Sauvie Island			Project ID#:	BUN-SI-02	Project Status:	In Progress
Project Rank:	20	Primary Category of Work	Driving Surface	Performance Attribute Total Score	17	Importance Score	TI-2 17.28
Logical Grouping Project ID #'s:	SI-ROAD-02						
Bridge Num and Name(s):	20136 Multnomah Channel, PNWR, Sauvie Island Rd. [Sauvie Island]						

Definition of Problem

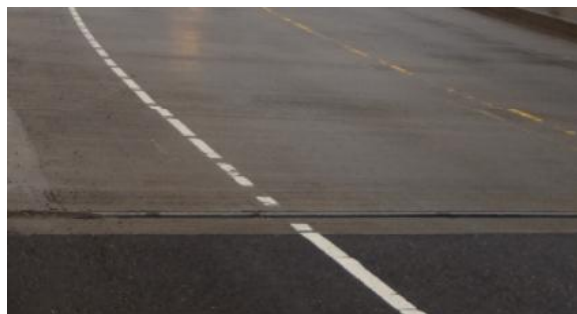
Evidence of settlement was observed by the Multnomah County Willamette River Bridges Capital Improvement Plan Consultant Team under the east abutment, east sidewalk, and around the guardrail posts. Pavement on the bridge approach has settled and further settlement is anticipated. A visual assessment of the settlement induced damage indicates that the base is failing and a simple overlay likely will not provide 20 years of service as is usual for pavement improvements.

Description of Proposed Solution

The proposed solution would include force grouting beneath the approach panel and complete pavement reconstruction where pavement has settled at or near the end panels. New durable striping placed on durable pavement.

Project Justification

The benefits of grouting under the approach panel are significant reduction of further settlement of the roadway and sidewalk surfaces as well as a reduction in long term maintenance costs for the approach roadway.



Right-of-Way:	\$0
Utility Reimbursement:	\$0
Construction:	\$992,445
Preliminary Engineering:	\$248,111
Construction Engineering:	\$248,111
Total Cost at Target Construction Time:	\$1,488,668
Target Construction Time:	2020-2024

Notes:

This project includes improvements for bicycle or pedestrian users.