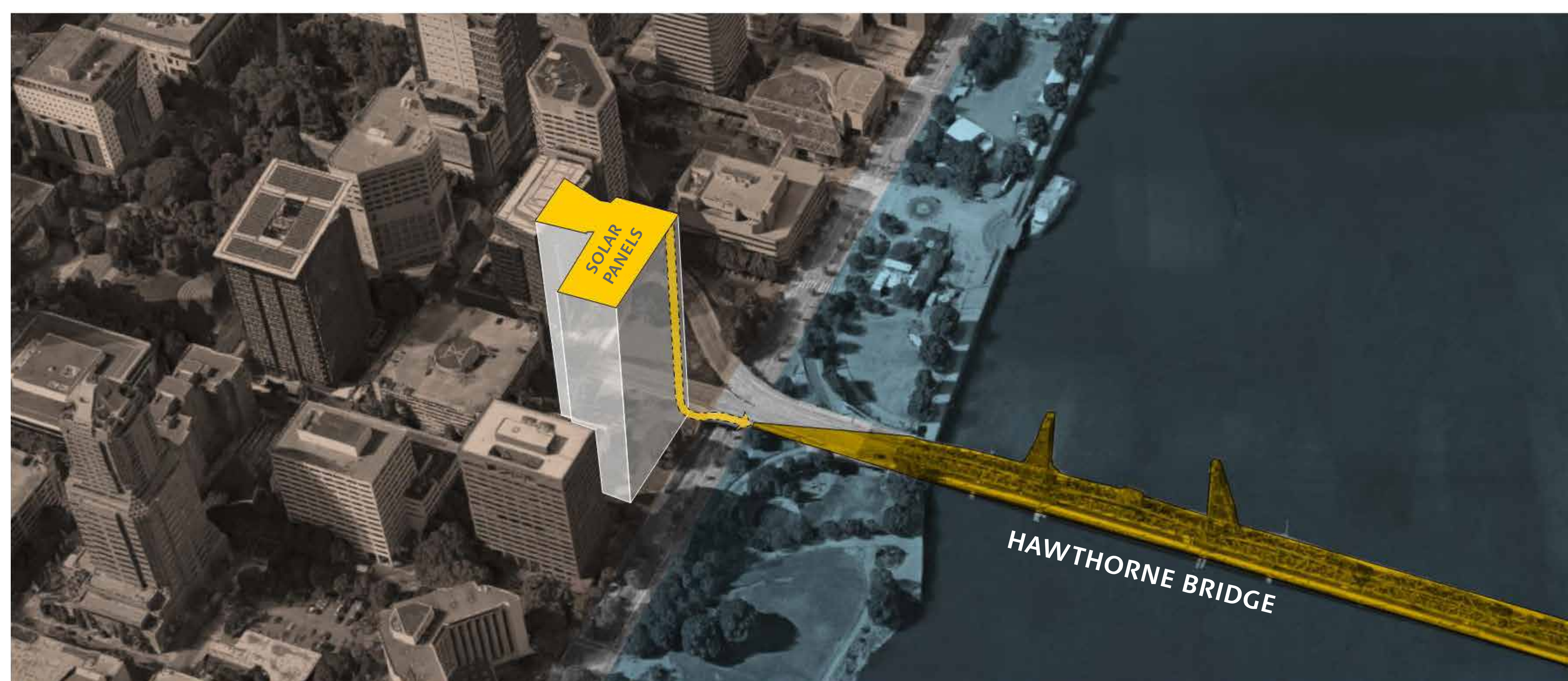


# Sustainability Multnomah County Central Courthouse



SOLAR ENERGY FROM ROOFTOP SOLAR PANELS TO POWER THE HAWTHORNE BRIDGE

**Net Zero Bridge**

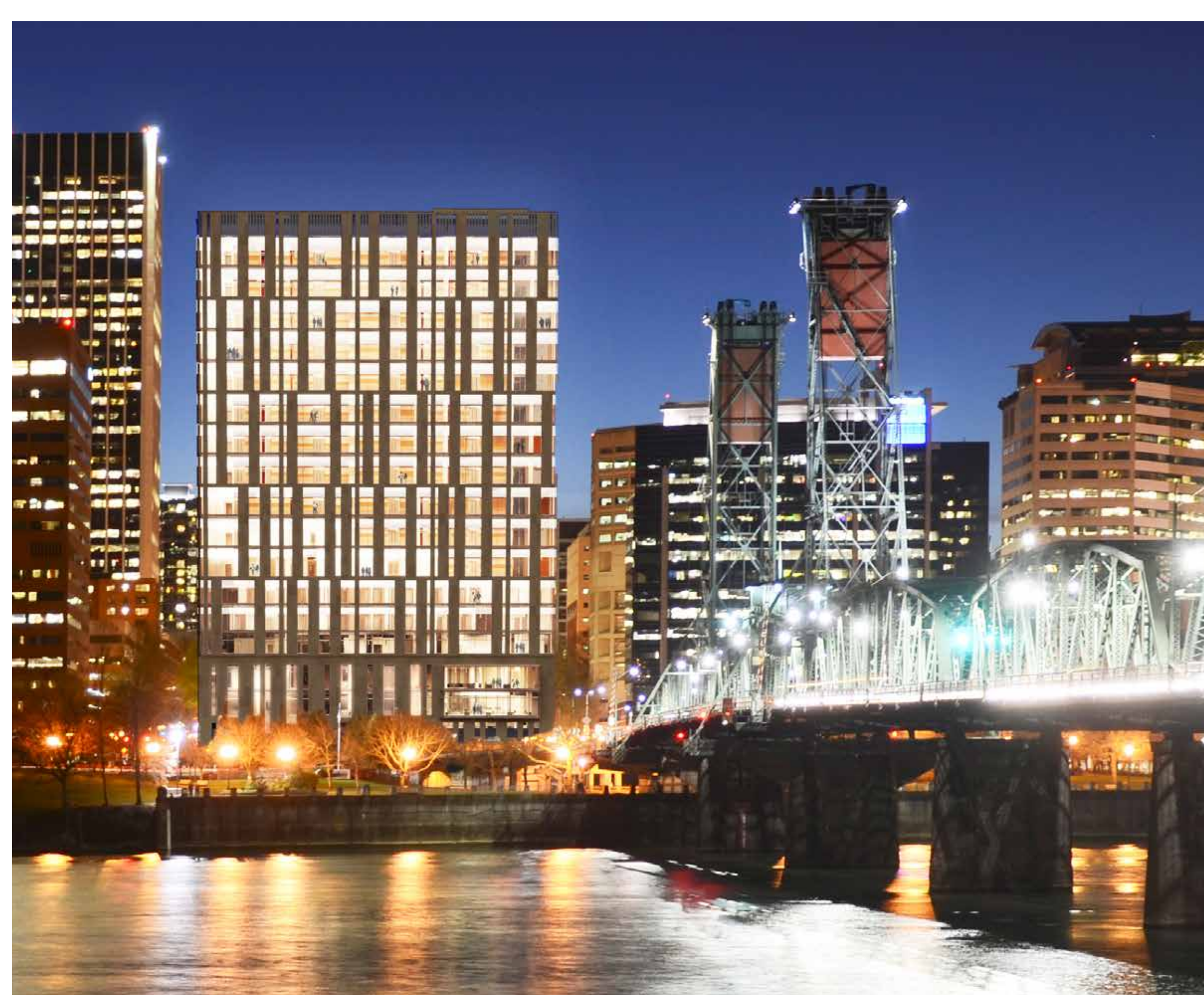
To maximize the energy production potential of the rooftop solar panels, the Courthouse array will be tied directly to the grid that is powering the Hawthorne Bridge. Even on holidays and weekends when the building is vacant, 100% of the power that is being produced will be utilized, both to power the bridge for lifts during the day and to offset lighting energy loads at night. The solar array is estimated to generate enough power over the course of the year to cover all utility costs for this piece of critical infrastructure, making the Hawthorne Portland's first Net Zero Bridge.



GREEN ROOF EXAMPLE



SOLAR PANELS EXAMPLE

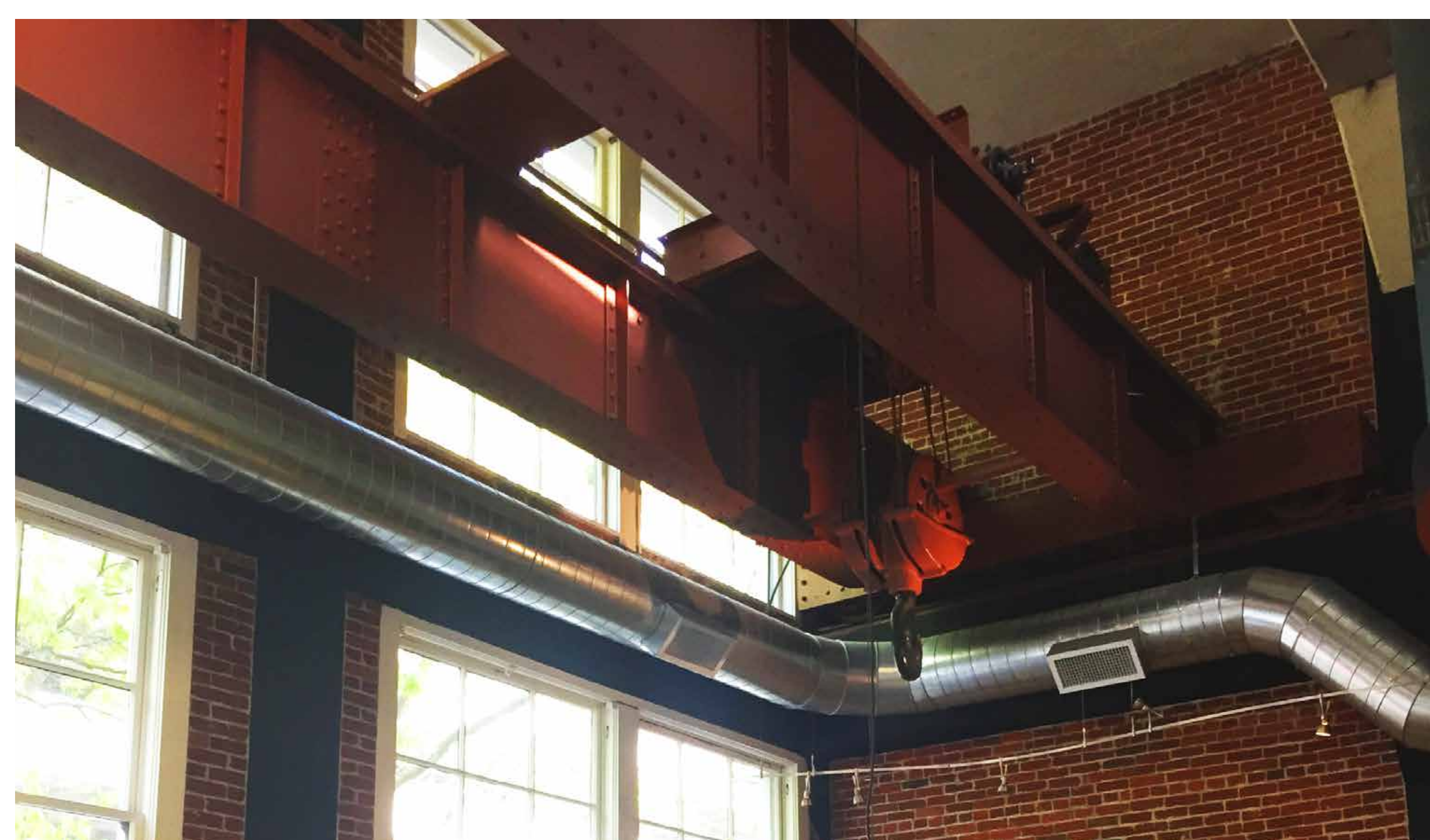


NIGHT IMAGE FROM EAST SIDE OF HAWTHORNE BRIDGE

- Sustainability Goals**
- LEED Gold
  - Solar panels
  - Green roof
  - Passive energy solution
  - Reuse Jefferson Station
  - Rainwater catchment
  - 2030 Architecture Challenge
  - Stormwater planter



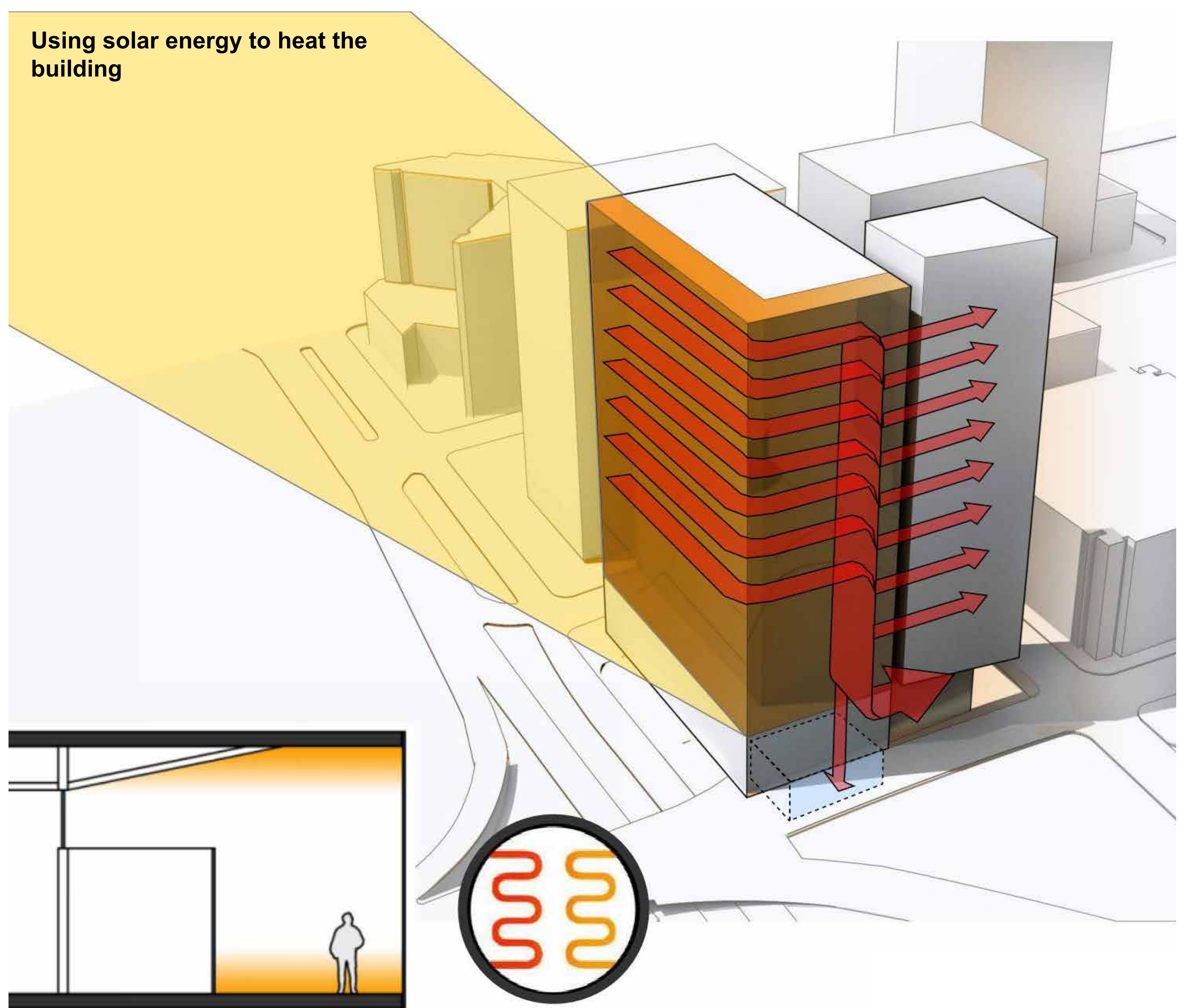
ELEVATION OF TOWER AND JEFFERSON STATION FROM SW FIRST AVENUE



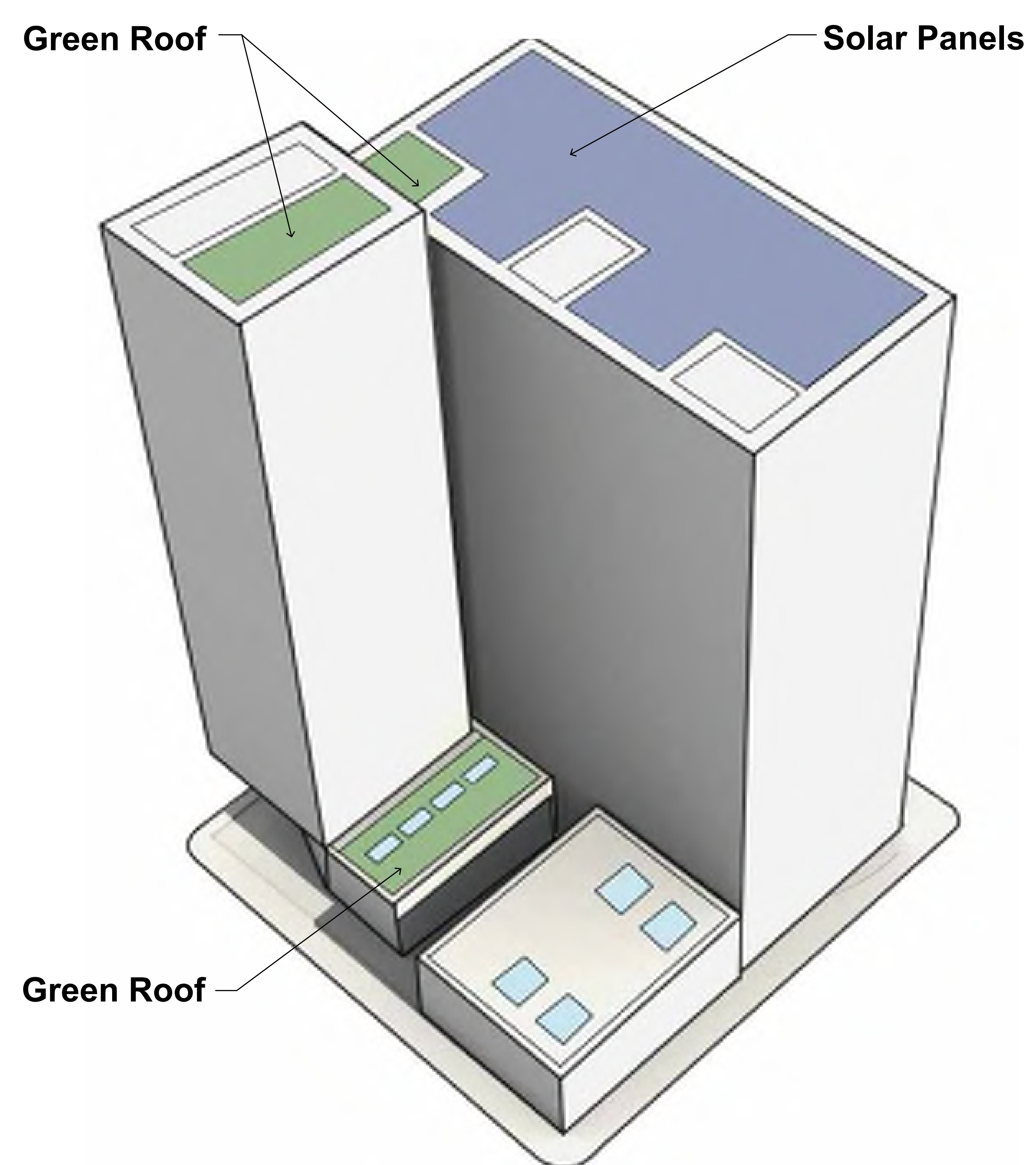
PRESERVING HISTORICAL CHARACTER



HISTORIC JEFFERSON STATION - 1931



SOLAR COLLECTOR STRATEGY



GREEN ROOF AND SOLAR PANELS

NOTE: ALL DESIGN INFORMATION IS IN DRAFT FORM AND SUBJECT TO CHANGE