

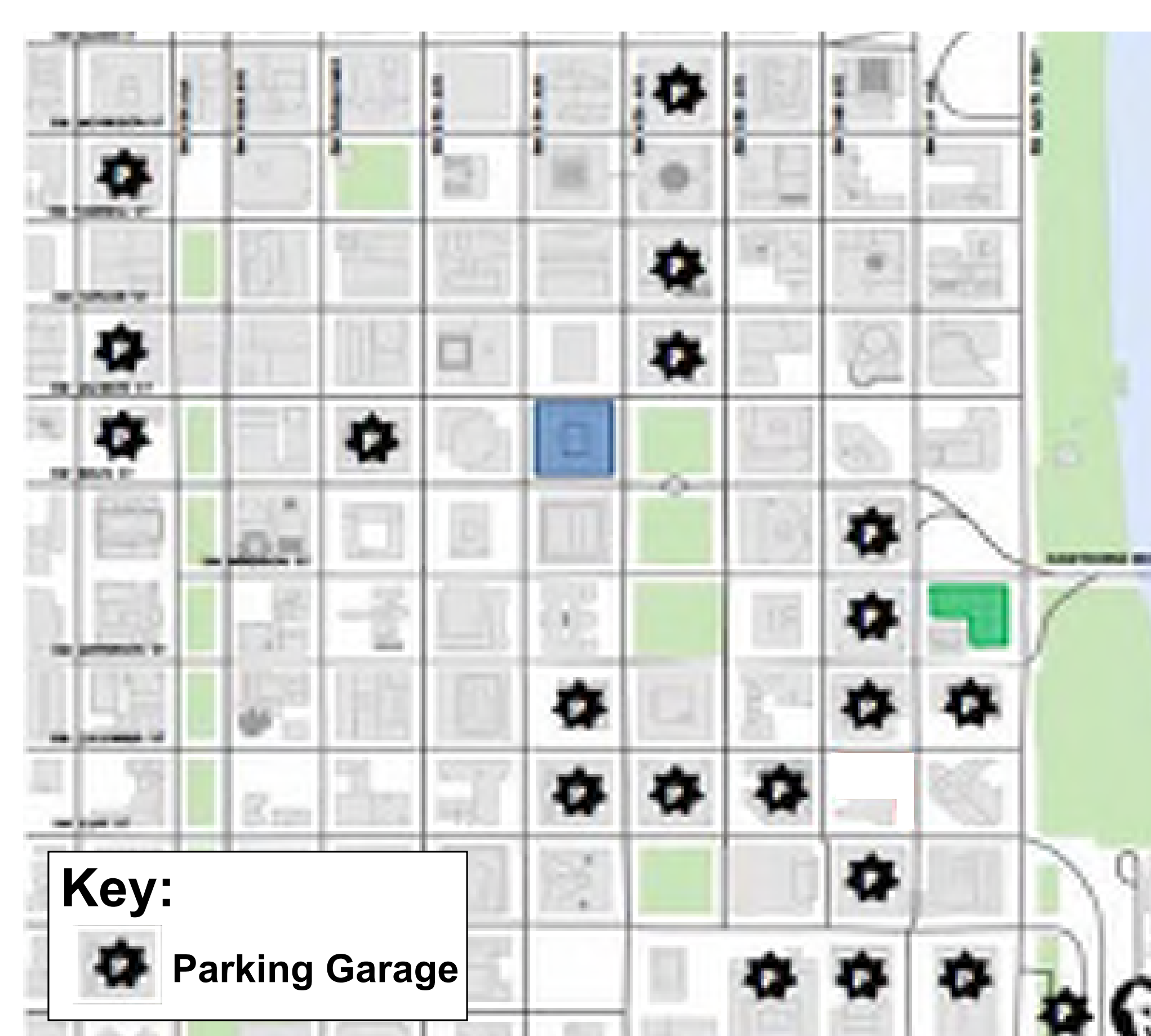
Entry on SW Madison and SW First Multnomah County Central Courthouse



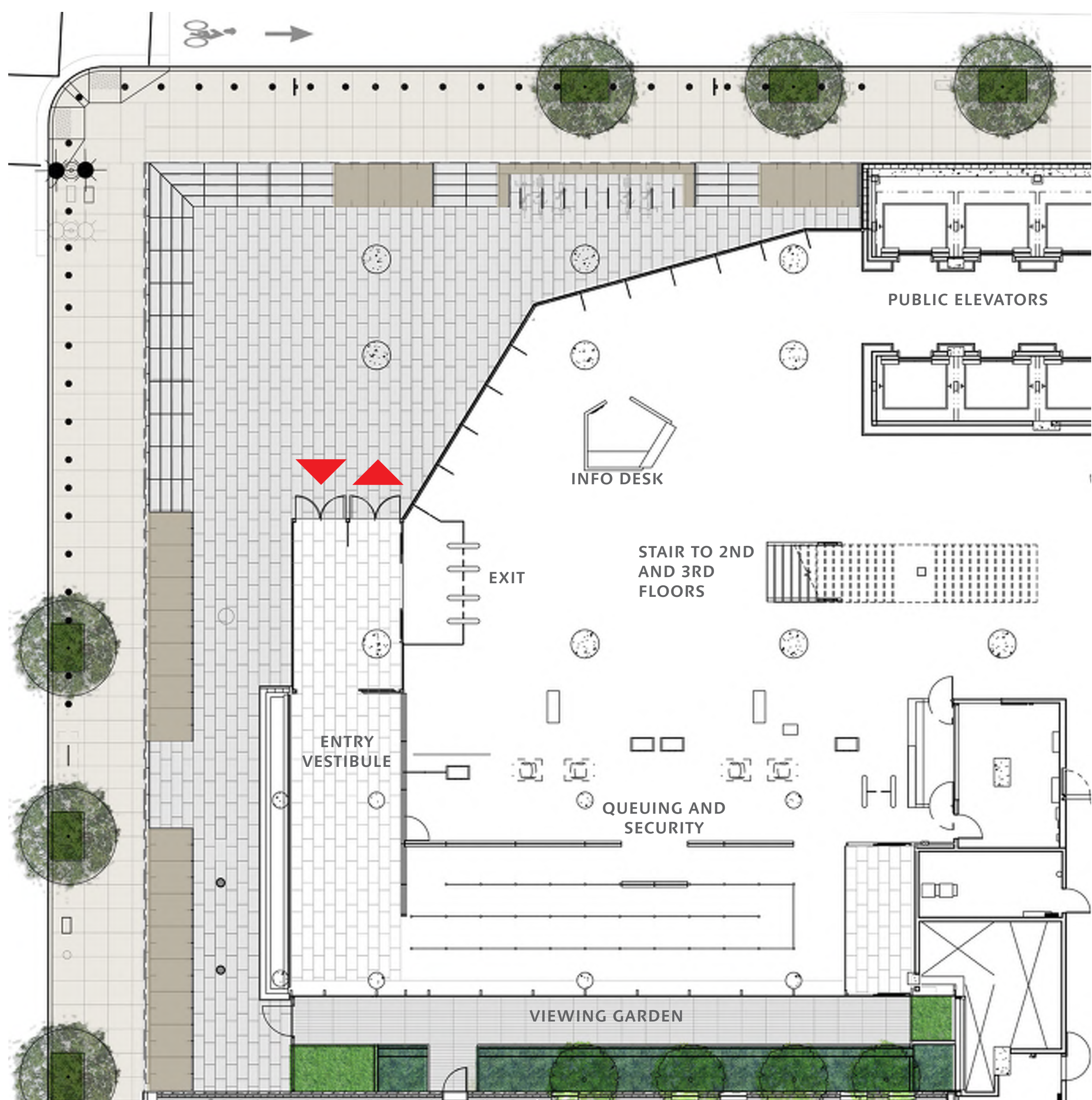
PROPOSED MAIN ENTRY

Entry Sequence

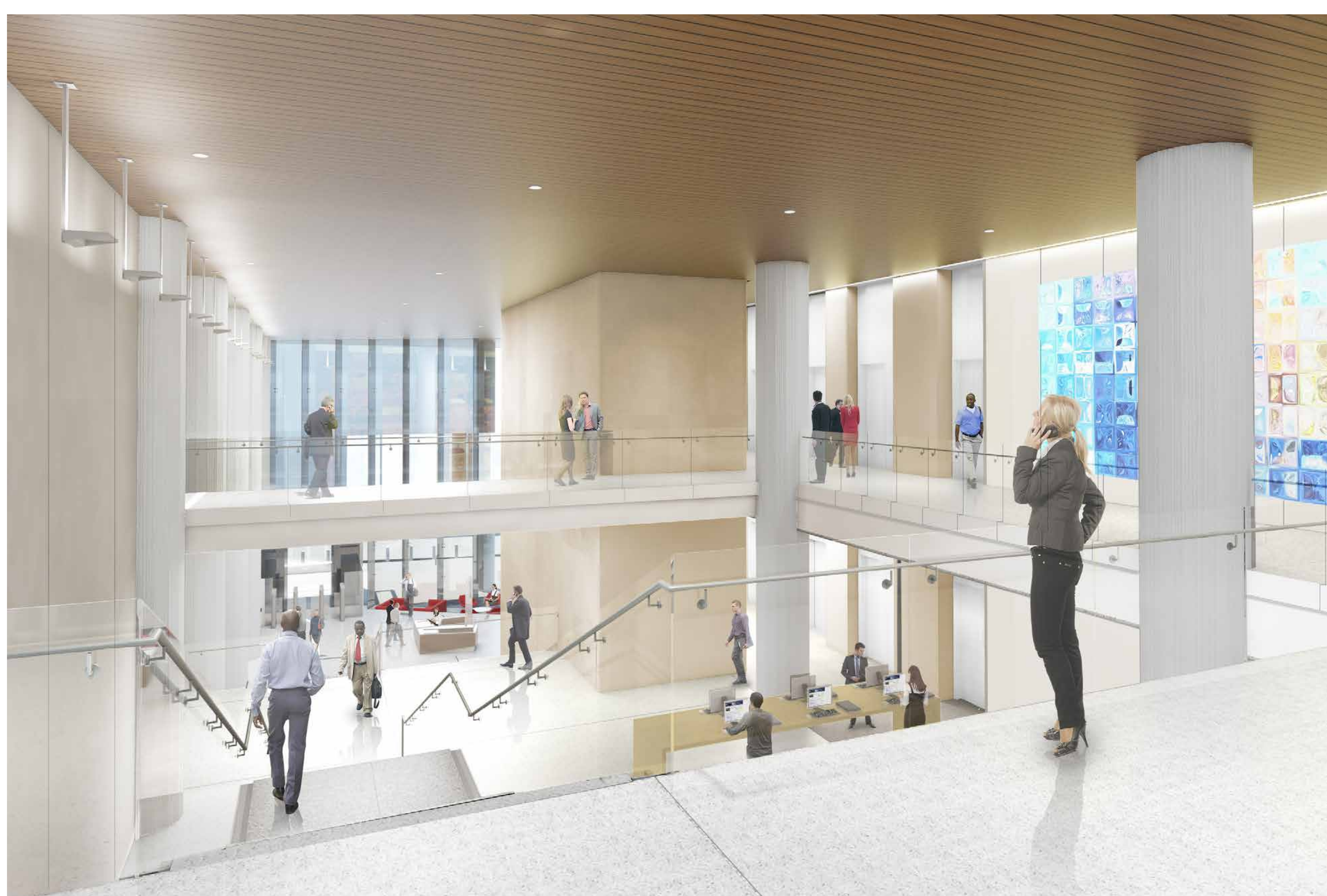
- The entry to the Courthouse ties into the existing city fabric, connecting the Courthouse to the urban context of Portland.
- The main lobby has a three story atrium that acts as a welcoming entrance to the Courthouse.
- The queuing capacity within the building is for more than 80 people. A covered raised plaza just outside the doors for capacity for an additional 100 people.
- Visitors enter off the busy city street and ascend to the second and third floors, which have the highest number of visitors and also a view overlooking the Willamette River.
- The building is fully ADA compliant.



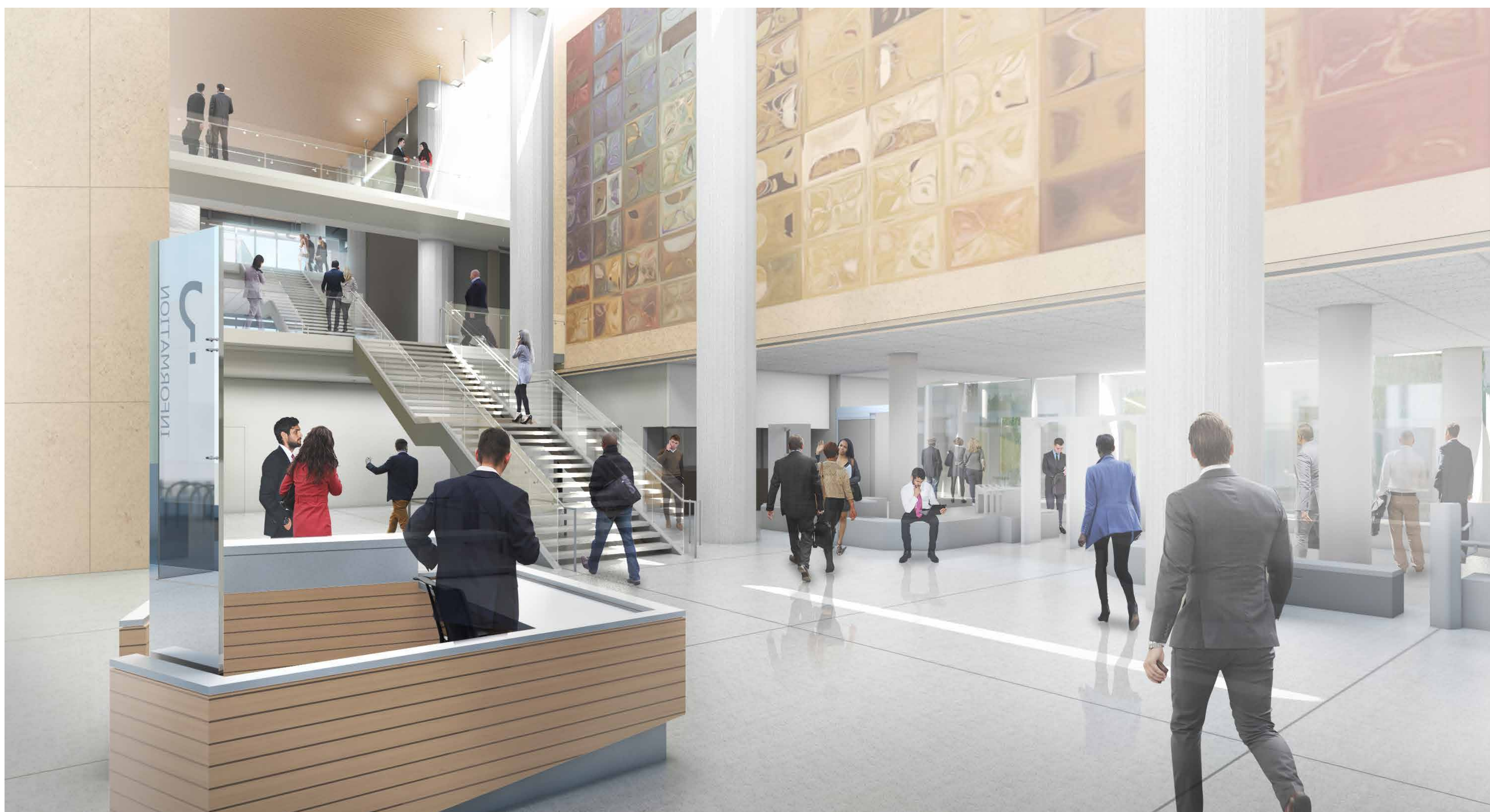
PARKING GARAGE LOCATIONS



BUILDING ENTRY



VIEW OF LOBBY SPACE FROM 3RD FLOOR



LOBBY PERSPECTIVE

NOTE: ALL DESIGN INFORMATION IS IN DRAFT FORM AND SUBJECT TO CHANGE